



# SZABO SCANDIC

Part of Europa Biosite

## Produktinformation



Forschungsprodukte & Biochemikalien



Zellkultur & Verbrauchsmaterial



Diagnostik & molekulare Diagnostik



Laborgeräte & Service

Weitere Information auf den folgenden Seiten!  
See the following pages for more information!



### Lieferung & Zahlungsart

siehe unsere [Liefer- und Versandbedingungen](#)

### Zuschläge

- Mindermengenzuschlag
- Trockeneiszuschlag
- Gefahrgutzuschlag
- Expressversand

### SZABO-SCANDIC HandelsgmbH

Quellenstraße 110, A-1100 Wien

T. +43(0)1 489 3961-0

F. +43(0)1 489 3961-7

[mail@szabo-scandic.com](mailto:mail@szabo-scandic.com)

[www.szabo-scandic.com](http://www.szabo-scandic.com)

[linkedin.com/company/szaboscandic](https://www.linkedin.com/company/szaboscandic) 

# HIF1- $\alpha$ Antibody

Rabbit Polyclonal

Antigen Affinity Purified Protein ID Q16665

Catalog No. A300-286A-T GeneID 3091

Lot No. A300-286A-T-7



<b>APPLICATIONS</b>	WB, IP, IHC, ICC-IF
<b>SPECIES REACTIVITY</b>	Human, Mouse
<b>PRESUMED REACTIVITY</b>	Based on 100% sequence identity, this antibody is predicted to react with Rat, Chicken and Bovine
<b>AMOUNT</b>	20 $\mu$ l (2 blots)
<b>CONCENTRATION</b>	100 $\mu$ g/ml
<b>STORAGE/SHELF LIFE</b>	2 - 8 $^{\circ}$ C / 1 year from date of receipt
<b>PHYSICAL STATE</b>	Liquid
<b>BUFFER</b>	Tris-buffered Saline containing 0.1% BSA and 0.09% Sodium Azide
<b>ISOTYPE</b>	IgG
<b>ORIGIN</b>	USA
<b>PRODUCTION PROCEDURES</b>	Antibody was affinity purified using an epitope specific to HIF1- $\alpha$ immobilized on solid support.

The epitope recognized by A300-286A-T maps to a region between residues 775 and the C-terminus (residue 826) of human hypoxia-inducible factor 1,  $\alpha$  subunit using the numbering given in Swiss-Prot entry Q16665 (GeneID 3091).

**APPLICATIONS** Centrifuge tube to remove product from lid. Optimal working dilutions should be determined experimentally by the investigator. Prepare working dilution immediately before use.

Western Blot 1:1000

Immunoprecipitation The antibody contained within A300-286A-T has been qualified for use in immunoprecipitation; however, we recommend using the alternative formulation of this antibody found as product A300-286A.

Immunohistochemistry 1:50 to 1:250. Epitope retrieval with citrate buffer pH6.0 for 20 minutes using a pressure cooker is recommended for FFPE tissue sections.

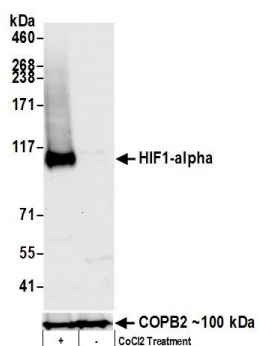
Immunofluorescence (ICC) 1:50 - 1:250. Epitope retrieval with citrate buffer pH 6.0 for 20 minutes using a pressure cooker is recommended for FFPE tissue sections.

**APPLICATION NOTES** Western blot of immunoprecipitates performed using Normal Pig Serum (Cat. No. S100-020), Goat anti-Rabbit Light Chain HRP Conjugate (Cat. No. A120-113P) and 4-8% SDS-PAGE (link to IP-western blot protocol in Additional Info section below).

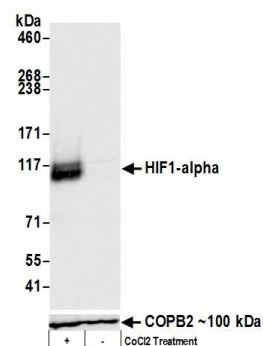
**ADDITIONAL INFO** Western blot of lysates performed using standard western blot reagents and 4-8% SDS-PAGE. <https://www.bethyl.com/product/A300-286A-T>

Use the link above to view SDS, a current list of citations, and other product specific information. IP-western blot protocol [https://www.bethyl.com/content/protocol\\_IP\\_WB](https://www.bethyl.com/content/protocol_IP_WB)

This document certifies that this product has met all of the quality control standards defined by Bethyl Laboratories, Inc.  
Eric McIntush, PhD | Chief Scientific Officer Date: January 21, 2020



**Detection of human HIF1 alpha by western blot. Samples:** Whole cell lysate (50  $\mu$ g) from HepG2 cells that were either treated with 200  $\mu$ M cobalt chloride (+) or mock treated (-). **Antibodies:** Affinity purified rabbit anti-HIF1 alpha antibody A300-286A-T (lot number A300-286A-T-7) used for WB at 1:1000. **Detection:** Chemiluminescence with exposure times of 10 seconds. Lower Panel: Rabbit anti-COPB2 antibody (A304-523A).



**Detection of mouse HIF1 alpha by western blot. Samples:** Whole cell lysate (50  $\mu$ g) from NIH3T3 cells that were either treated with 200  $\mu$ M cobalt chloride (+) or mock treated (-). **Antibodies:** Affinity purified rabbit anti-HIF1 alpha antibody A300-286A-T (lot number A300-286A-T-7) used for WB at 1:1000. **Detection:** Chemiluminescence with exposure times of 3 seconds. Lower Panel: Rabbit anti-COPB2 antibody (A304-523A).