



SZABO SCANDIC

Part of Europa Biosite

Produktinformation



Forschungsprodukte & Biochemikalien



Zellkultur & Verbrauchsmaterial



Diagnostik & molekulare Diagnostik



Laborgeräte & Service

Weitere Information auf den folgenden Seiten!
See the following pages for more information!



Lieferung & Zahlungsart

siehe unsere [Liefer- und Versandbedingungen](#)

Zuschläge

- Mindermengenzuschlag
- Trockeneiszuschlag
- Gefahrgutzuschlag
- Expressversand

SZABO-SCANDIC HandelsgmbH

Quellenstraße 110, A-1100 Wien

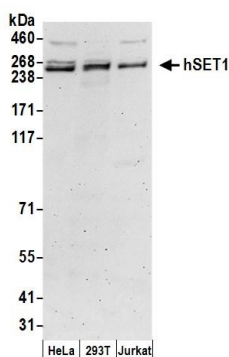
T. +43(0)1 489 3961-0

F. +43(0)1 489 3961-7

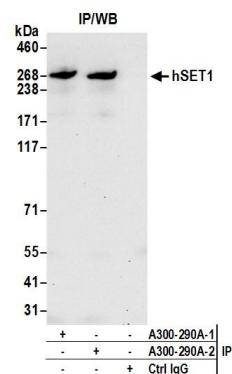
mail@szabo-scandic.com

www.szabo-scandic.com

[linkedin.com/company/szaboscandic](https://www.linkedin.com/company/szaboscandic) 



Detection of human hSET1 by western blot. *Samples:* Nuclear extract (50 µg) from HeLa, HEK293T, and Jurkat cells. *Antibody:* Affinity purified rabbit anti-hSET1 antibody A300-290A (lot A300-290A-2) used for WB at 0.1 µg/ml. *Detection:* Chemiluminescence with an exposure time of 3 minutes.



Detection of human hSET1 by western blot of immunoprecipitates. *Samples:* Nuclear extract (1 mg for IP; 20% of IP loaded) from HEK293T cells. *Antibodies:* Affinity purified rabbit anti-hSET1 antibody A300-290A (lot A300-290A-2) used for IP at 6 µg per reaction. hSET1 was also immunoprecipitated by a previous lot of this antibody A300-290A-1. For blotting immunoprecipitated hSET1, A300-289A was used at 1 µg/ml. *Detection:* Chemiluminescence with an exposure time of 30 seconds.