



SZABO SCANDIC

Part of Europa Biosite

Produktinformation



Forschungsprodukte & Biochemikalien



Zellkultur & Verbrauchsmaterial



Diagnostik & molekulare Diagnostik



Laborgeräte & Service

Weitere Information auf den folgenden Seiten!
See the following pages for more information!



Lieferung & Zahlungsart

siehe unsere [Liefer- und Versandbedingungen](#)

Zuschläge

- Mindermengenzuschlag
- Trockeneiszuschlag
- Gefahrgutzuschlag
- Expressversand

SZABO-SCANDIC HandelsgmbH

Quellenstraße 110, A-1100 Wien

T. +43(0)1 489 3961-0

F. +43(0)1 489 3961-7

mail@szabo-scandic.com

www.szabo-scandic.com

[linkedin.com/company/szaboscandic](https://www.linkedin.com/company/szaboscandic) 

Caper Antibody

Rabbit Polyclonal

Antigen Affinity Purified	RefSeq ID	NP_909122.1
Catalog No. A300-291A	Uniprot ID	Q14498
Lot No. A300-291A-3	GeneID	9584

APPLICATIONS	WB, IP, IHC
SPECIES REACTIVITY	Human
PRESUMED REACTIVITY	Based on 100% sequence identity, this antibody is predicted to react with Mouse and Orangutan
AMOUNT	100 µl
CONCENTRATION	1000 µg/ml
STORAGE/SHELF LIFE	2 – 8°C / 1 year from date of receipt
PHYSICAL STATE	Liquid
BUFFER	Phosphate Buffered Saline (PBS) containing 0.09% Sodium Azide
ISOTYPE	IgG
ORIGIN	USA
PRODUCTION PROCEDURES	Antibody was affinity purified using an epitope specific to Caper immobilized on solid support.

The epitope recognized by A300-291A maps to a region between residues 325 and 375 of human Caper, Coactivator of activating protein-1 and estrogen receptors using the numbering given in SwissProt entry Q14498 (GeneID 9584).

Immunoglobulin concentration was determined by extinction coefficient: absorbance at 280 nm of 1.4 equals 1.0 mg of IgG.

APPLICATIONS Centrifuge tube to remove product from lid. Optimal working dilutions should be determined experimentally by the investigator. Prepare working dilution immediately before use.

Western Blot 1:2,000 – 1:10,000

Immunoprecipitation 2 – 10 µg/mg lysate

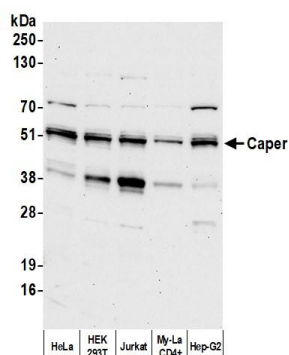
Immunohistochemistry 1:2,000 to 1:10,000. Epitope retrieval with citrate buffer pH6.0 is recommended for FFPE tissue sections.

IHC HUMAN CONTROLS Breast, Colon Carcinoma, Prostate Carcinoma, Skin Squamous Cell Carcinoma, Stomach Adenocarcinoma

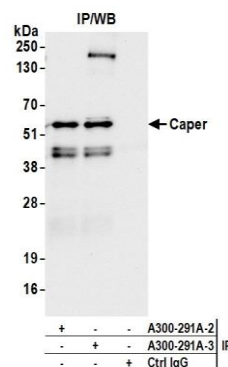
ADDITIONAL INFO <https://www.fortislife.com/p/A300-291A>

Use the link above to view SDS, a current list of citations, and other product specific information.

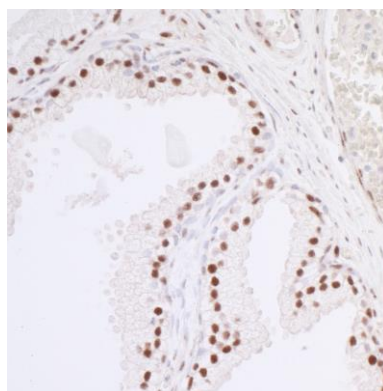
This document certifies that this product has met all of the quality control standards defined by Bethyl Laboratories, Inc.
Michael Spencer, PhD Date: August 31, 2022



Detection of human Caper by western blot. *Samples:* Whole cell lysate (10 μ g) from HeLa, HEK293T, Jurkat, My-La CD4+, and Hep-G2 cells prepared using NETN lysis buffer. *Antibody:* Affinity purified rabbit anti-Caper antibody A300-291A (lot A300-291A-3) used for WB at 0.1 μ g/ml. *Detection:* Chemiluminescence with an exposure time of 30 seconds.



Detection of human Caper by western blot of immunoprecipitates. *Samples:* Whole cell lysate (1.0 mg per IP reaction; 20% of IP loaded) from HeLa cells prepared using NETN lysis buffer. *Antibodies:* Affinity purified rabbit anti-Caper antibody (A300-291A lot 3) used for IP at 6 μ g per reaction. Caper was also immunoprecipitated by a previous lot of this antibody (A300-291A lot 2). For blotting immunoprecipitated Caper, A300-291A was used at 0.1 μ g/ml. *Detection:* Chemiluminescence with an exposure time of 3 seconds.



Detection of human Caper by immunohistochemistry.

Sample: FFPE section of human prostate carcinoma.

Antibody: Affinity purified rabbit anti-Caper (Cat. No. A300-291A Lot 2) used at a dilution of 1:5,000 (0.2 μ g/ml).

Detection: DAB.