



SZABO SCANDIC

Part of Europa Biosite

Produktinformation



Forschungsprodukte & Biochemikalien



Zellkultur & Verbrauchsmaterial



Diagnostik & molekulare Diagnostik



Laborgeräte & Service

Weitere Information auf den folgenden Seiten!
See the following pages for more information!



Lieferung & Zahlungsart

siehe unsere [Liefer- und Versandbedingungen](#)

Zuschläge

- Mindermengenzuschlag
- Trockeneiszuschlag
- Gefahrgutzuschlag
- Expressversand

SZABO-SCANDIC HandelsgmbH

Quellenstraße 110, A-1100 Wien

T. +43(0)1 489 3961-0

F. +43(0)1 489 3961-7

mail@szabo-scandic.com

www.szabo-scandic.com

[linkedin.com/company/szaboscandic](https://www.linkedin.com/company/szaboscandic) 

FUS Antibody

Rabbit Polyclonal

Antigen Affinity Purified

Protein ID P35637

Catalog No. A300-292A

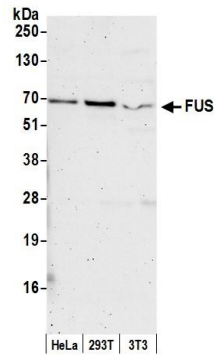
GeneID 2521

Lot No. A300-292A-2



APPLICATIONS	WB				
SPECIES REACTIVITY	Human, Mouse				
PRESUMED REACTIVITY	Based on 100% sequence identity, this antibody is predicted to react with Bovine				
AMOUNT	100 µl				
CONCENTRATION	1000 µg/ml				
STORAGE/SHELF LIFE	2 - 8° C / 1 year from date of receipt				
PHYSICAL STATE	Liquid				
BUFFER	Tris-citrate/phosphate buffer, pH 7 to 8 containing 0.09% Sodium Azide				
ISOTYPE	IgG				
ORIGIN	USA				
PRODUCTION PROCEDURES	<p>Antibody was affinity purified using an epitope specific to FUS immobilized on solid support.</p> <p>The epitope recognized by A300-292A maps to a region between residues 200 and 250 of human fusion (involved in t(12;16) in malignant liposarcoma) using the numbering given in SwissProt entry P35637 (GeneID 2521).</p> <p>Immunoglobulin concentration was determined by extinction coefficient: absorbance at 280 nm of 1.4 equals 1.0 mg of IgG.</p>				
APPLICATIONS	<p>Centrifuge tube to remove product from lid. Optimal working dilutions should be determined experimentally by the investigator. Prepare working dilution immediately before use.</p> <table><tr><td>Western Blot</td><td>1:200 - 1:10,000</td></tr><tr><td>Immunoprecipitation</td><td>Not recommended. Rabbit anti-FUS Antibodies A300-302A, A300-293A and A300-294A are much more efficient in IP.</td></tr></table>	Western Blot	1:200 - 1:10,000	Immunoprecipitation	Not recommended. Rabbit anti-FUS Antibodies A300-302A, A300-293A and A300-294A are much more efficient in IP.
Western Blot	1:200 - 1:10,000				
Immunoprecipitation	Not recommended. Rabbit anti-FUS Antibodies A300-302A, A300-293A and A300-294A are much more efficient in IP.				
APPLICATION NOTES	Western blot of lysates performed using standard western blot reagents and 4-20% SDS-PAGE.				
ADDITIONAL INFO	<p>https://www.bethyl.com/product/A300-292A</p> <p>Use the link above to view SDS, a current list of citations, and other product specific information.</p>				

This document certifies that this product has met all of the quality control standards defined by Bethyl Laboratories, Inc.
Eric McIntush, PhD | Chief Scientific Officer Date: June 21, 2019

**Detection of human and mouse FUS by western blot.**

Samples: Whole cell lysate (50 μ g) from HeLa, HEK293T, and mouse NIH 3T3 cells prepared using NETN lysis buffer.

Antibody: Affinity purified rabbit anti-FUS antibody A300-292A (lot A300-292A-2) used for WB at 0.1 μ g/ml.

Detection: Chemiluminescence with an exposure time of 3 minutes.