



SZABO SCANDIC

Part of Europa Biosite

Produktinformation



Forschungsprodukte & Biochemikalien



Zellkultur & Verbrauchsmaterial



Diagnostik & molekulare Diagnostik



Laborgeräte & Service

Weitere Information auf den folgenden Seiten!
See the following pages for more information!



Lieferung & Zahlungsart

siehe unsere [Liefer- und Versandbedingungen](#)

Zuschläge

- Mindermengenzuschlag
- Trockeneiszuschlag
- Gefahrgutzuschlag
- Expressversand

SZABO-SCANDIC HandelsgmbH

Quellenstraße 110, A-1100 Wien

T. +43(0)1 489 3961-0

F. +43(0)1 489 3961-7

mail@szabo-scandic.com

www.szabo-scandic.com

[linkedin.com/company/szaboscandic](https://www.linkedin.com/company/szaboscandic) 

FUS Antibody

Rabbit Polyclonal

| | | |
|---------------------------|------------|-------------|
| Antigen Affinity Purified | RefSeq ID | NP_004951.1 |
| Catalog No. A300-293A | Uniprot ID | P35637 |
| Lot No. A300-293A-6 | GeneID | 2521 |

| | |
|------------------------------|---|
| APPLICATIONS | WB, IP, IHC |
| SPECIES REACTIVITY | Human, Mouse |
| PRESUMED REACTIVITY | Based on 100% sequence identity, this antibody is predicted to react with Bovine |
| AMOUNT | 100 µl |
| CONCENTRATION | 1000 µg/ml |
| STORAGE/SHELF LIFE | 2 – 8°C / 1 year from date of receipt |
| PHYSICAL STATE | Liquid |
| BUFFER | Tris-citrate/phosphate buffer, pH 7 to 8 containing 0.09% Sodium Azide |
| ISOTYPE | IgG |
| ORIGIN | USA |
| PRODUCTION PROCEDURES | Antibody was affinity purified using an epitope specific to FUS immobilized on solid support. |

The epitope recognized by A300-293A maps to a region between residues 400 and 450 of human fusion (involved in t(12;16) in malignant liposarcoma) using the numbering given in SwissProt entry P35637 (GeneID 2521).

Immunoglobulin concentration was determined by extinction coefficient: absorbance at 280 nm of 1.4 equals 1.0 mg of IgG.

APPLICATIONS Centrifuge tube to remove product from lid. Optimal working dilutions should be determined experimentally by the investigator. Prepare working dilution immediately before use.

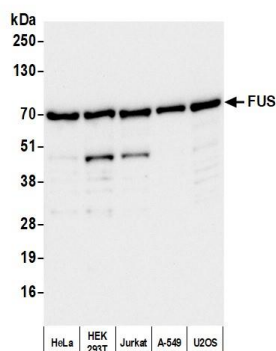
| | |
|----------------------|--|
| Western Blot | 1:2,000 – 1:10,000 |
| Immunoprecipitation | 2 – 10 µg/mg lysate |
| Immunohistochemistry | 1:1,000 to 1:5,000. Epitope retrieval with citrate buffer pH6.0 is recommended for FFPE tissue sections. |

IHC HUMAN CONTROLS Breast Carcinoma, Colon Carcinoma, Ovarian Carcinoma, Prostate Carcinoma, Skin Squamous Cell Carcinoma, Testicular Seminoma

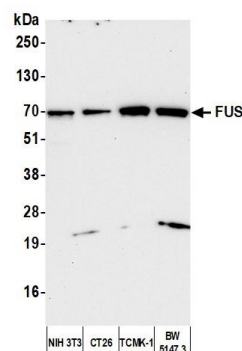
IHC MOUSE CONTROLS Renal Cell Carcinoma, Spleen, Squamous Cell Carcinoma, Teratoma

ADDITIONAL INFO <https://www.fortislifesciences.com/p/A300-293A>
Use the link above to view SDS, a current list of citations, and other product specific information.

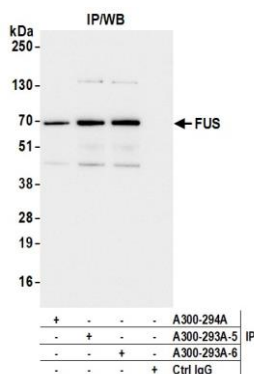
This document certifies that this product has met all of the quality control standards defined by Bethyl Laboratories, Inc.
Michael Spencer, PhD Date: February 7, 2023



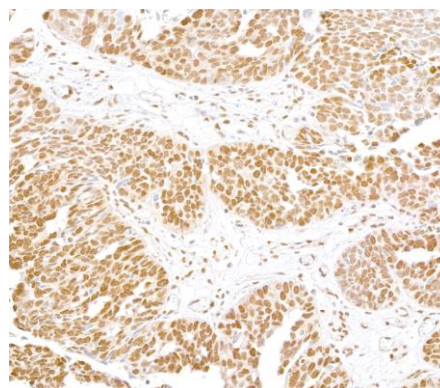
Detection of human FUS by western blot. *Samples:* Whole cell lysate (25 µg) prepared using NETN buffer from HeLa, HEK293T, Jurkat, A-549, and U2OS cells prepared using NETN lysis buffer. *Antibody:* Affinity purified rabbit anti-FUS antibody (A300-293A lot 6) used for WB at 0.1 µg/ml. *Detection:* Chemiluminescence with an exposure time of 10 seconds.



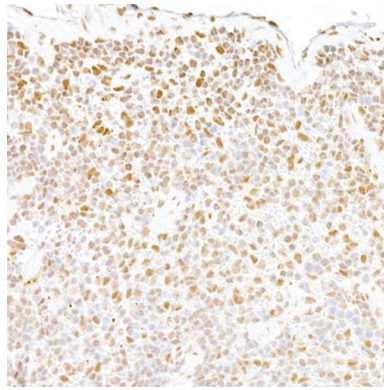
Detection of mouse FUS by western blot. *Samples:* Whole cell lysate (10 µg) prepared using NETN buffer from NIH 3T3, CT26, TCMK-1, and BW5147.3 cells prepared using NETN lysis buffer. *Antibody:* Affinity purified rabbit anti-FUS antibody (A300-293A-6 lot 6) used for WB at 0.1 µg/ml. *Detection:* Chemiluminescence with an exposure time of 75 seconds.



Detection of human FUS by western blot of immunoprecipitates. *Samples:* Whole cell lysate (1.0 mg per IP reaction; 20% of IP loaded) from HEK293T cells prepared using NETN lysis buffer. *Antibodies:* Affinity purified rabbit anti-FUS antibody (A300-293A lot 6) used for IP at 6 µg per reaction. FUS was also immunoprecipitated by a previous lot of this antibody (A300-293A lot 5) and a second antibody against a different epitope of FUS (A300-294A). For blotting immunoprecipitated FUS, A300-293A was used at 0.1 µg/ml. *Detection:* Chemiluminescence with an exposure time of 3 seconds.



Detection of human FUS by immunohistochemistry. *Sample:* FFPE section of human ovarian carcinoma. *Antibody:* Affinity purified rabbit anti-FUS (A300-293A lot 6) used at of 1:5,000 (0.2µg/ml). *Detection:* DAB



Detection of mouse FUS by immunohistochemistry.

Sample: FFPE section of mouse spleen. *Antibody:* Affinity purified rabbit anti-FUS (A300-293A lot 6) used at 1:5,000 (0.2µg/ml). *Detection:* DAB