



# SZABO SCANDIC

Part of Europa Biosite

## Produktinformation



Forschungsprodukte & Biochemikalien



Zellkultur & Verbrauchsmaterial



Diagnostik & molekulare Diagnostik



Laborgeräte & Service

Weitere Information auf den folgenden Seiten!  
See the following pages for more information!



### Lieferung & Zahlungsart

siehe unsere [Liefer- und Versandbedingungen](#)

### Zuschläge

- Mindermengenzuschlag
- Trockeneiszuschlag
- Gefahrgutzuschlag
- Expressversand

### SZABO-SCANDIC HandelsgmbH

Quellenstraße 110, A-1100 Wien

T. +43(0)1 489 3961-0

F. +43(0)1 489 3961-7

[mail@szabo-scandic.com](mailto:mail@szabo-scandic.com)

[www.szabo-scandic.com](http://www.szabo-scandic.com)

[linkedin.com/company/szaboscandic](https://www.linkedin.com/company/szaboscandic) 

# FUS Antibody

Rabbit Polyclonal

Antigen Affinity Purified

Protein ID P35637

Catalog No. A300-294A

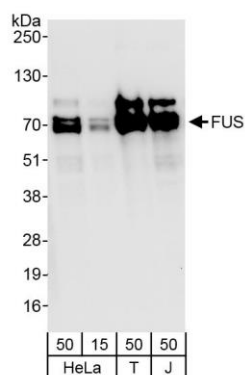
GeneID 2521

Lot No. A300-294A-2

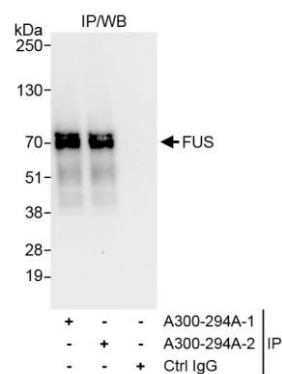


<b>APPLICATIONS</b>	WB, IP, IHC						
<b>SPECIES REACTIVITY</b>	Human, Mouse						
<b>PRESUMED REACTIVITY</b>	Based on 100% sequence identity, this antibody is predicted to react with Bovine						
<b>AMOUNT</b>	100 µl						
<b>CONCENTRATION</b>	1000 µg/ml						
<b>STORAGE/SHELF LIFE</b>	2 - 8° C / 1 year from date of receipt						
<b>PHYSICAL STATE</b>	Liquid						
<b>BUFFER</b>	Tris-citrate/phosphate buffer, pH 7 to 8 containing 0.09% Sodium Azide						
<b>ISOTYPE</b>	IgG						
<b>ORIGIN</b>	USA						
<b>PRODUCTION PROCEDURES</b>	<p>Antibody was affinity purified using an epitope specific to FUS immobilized on solid support.</p> <p>The epitope recognized by A300-294A maps to a region between residue 500 and the C-terminus (residue 526) of human fusion (involved in t(12;16) in malignant liposarcoma) using the numbering given in SwissProt entry P35637 (GeneID 2521).</p> <p>Immunoglobulin concentration was determined by extinction coefficient: absorbance at 280 nm of 1.4 equals 1.0 mg of IgG.</p>						
<b>APPLICATIONS</b>	<p>Centrifuge tube to remove product from lid. Optimal working dilutions should be determined experimentally by the investigator. Prepare working dilution immediately before use.</p> <table><tr><td>Western Blot</td><td>1:10,000 - 1:50,000</td></tr><tr><td>Immunoprecipitation</td><td>2 - 10 µg/mg lysate</td></tr><tr><td>Immunohistochemistry</td><td>1:1,000 - 1:10,000. Epitope retrieval with citrate buffer pH 6.0 is recommended for FFPE tissue sections.</td></tr></table>	Western Blot	1:10,000 - 1:50,000	Immunoprecipitation	2 - 10 µg/mg lysate	Immunohistochemistry	1:1,000 - 1:10,000. Epitope retrieval with citrate buffer pH 6.0 is recommended for FFPE tissue sections.
Western Blot	1:10,000 - 1:50,000						
Immunoprecipitation	2 - 10 µg/mg lysate						
Immunohistochemistry	1:1,000 - 1:10,000. Epitope retrieval with citrate buffer pH 6.0 is recommended for FFPE tissue sections.						
<b>APPLICATION NOTES</b>	<p>Western blot of immunoprecipitates performed using Normal Pig Serum (Cat. No. S100-020), Goat anti-Rabbit Light Chain HRP Conjugate (Cat. No. A120-113P) and 4-20% SDS-PAGE (link to IP-western blot protocol in Additional Info section below).</p> <p>Western blot of lysates performed using standard western blot reagents and 4-20% SDS-PAGE.</p>						
<b>IHC HUMAN CONTROLS</b>	Breast Carcinoma, Colon Carcinoma, Ovarian Carcinoma, Prostate Carcinoma, Skin Squamous Cell Carcinoma, Stomach Adenocarcinoma, Testicular Seminoma						
<b>IHC MOUSE CONTROLS</b>	Renal Cell Carcinoma, Teratoma						
<b>ADDITIONAL INFO</b>	<p><a href="https://www.bethyl.com/product/A300-294A">https://www.bethyl.com/product/A300-294A</a></p> <p>Use the link above to view SDS, a current list of citations, and other product specific information. IP-western blot protocol <a href="https://www.bethyl.com/content/protocol_IP_WB">https://www.bethyl.com/content/protocol_IP_WB</a></p>						

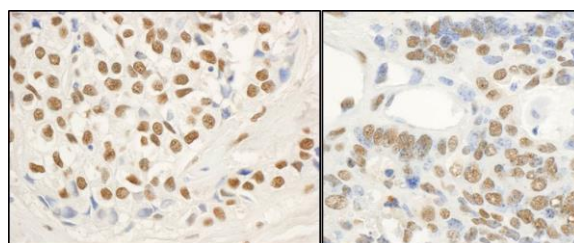
This document certifies that this product has met all of the quality control standards defined by Bethyl Laboratories, Inc.  
Eric McIntush, PhD | Chief Scientific Officer Date: October 21, 2019



**Detection of human FUS by western blot.** *Samples:* Whole cell lysate from HeLa (15 and 50 µg); HEK293T (T; 50 µg) and Jurkat (J; 50 µg) cells prepared using NETN lysis buffer. *Antibodies:* Affinity purified rabbit anti-FUS antibody A300-294A (lot A300-294A-2) used for WB at 0.1 µg/ml. *Detection:* Chemiluminescence with exposure time of 3 seconds.



**Detection of human FUS by western blot of immunoprecipitates.** *Samples:* Whole cell lysate (1.0 mg for IP, 20% of IP loaded) from HeLa cells prepared using NETN lysis buffer. *Antibodies:* Affinity purified rabbit anti-FUS antibody A300-294A (lot A300-294A-2) used for IP at 6 µg/mg lysate. FUS was also immunoprecipitated by a previous lot of this antibody (lot A300-294A-1). For blotting immunoprecipitated FUS, A300-294A was used at 0.1 µg/ml. *Detection:* Chemiluminescence with exposure time of 10 seconds.



**Detection of human and mouse FUS by immunohistochemistry.** *Sample:* FFPE section of human breast carcinoma (left) and mouse teratoma (right). *Antibody:* Affinity purified rabbit anti-FUS (Cat. No. A300-294A Lot2) used at a dilution of 1:5,000 (0.2µg/ml) and 1:1,000 (1µg/ml). *Detection:* DAB