



SZABO SCANDIC

Part of Europa Biosite

Produktinformation



Forschungsprodukte & Biochemikalien



Zellkultur & Verbrauchsmaterial



Diagnostik & molekulare Diagnostik



Laborgeräte & Service

Weitere Information auf den folgenden Seiten!
See the following pages for more information!



Lieferung & Zahlungsart

siehe unsere [Liefer- und Versandbedingungen](#)

Zuschläge

- Mindermengenzuschlag
- Trockeneiszuschlag
- Gefahrgutzuschlag
- Expressversand

SZABO-SCANDIC HandelsgmbH

Quellenstraße 110, A-1100 Wien

T. +43(0)1 489 3961-0

F. +43(0)1 489 3961-7

mail@szabo-scandic.com

www.szabo-scandic.com

[linkedin.com/company/szaboscandic](https://www.linkedin.com/company/szaboscandic) 

ATM Antibody

Rabbit Polyclonal

Antigen Affinity Purified	RefSeq ID	NP_000042.2
Catalog No. A300-299A-T	Uniprot ID	Q13315
Lot No. 2	GeneID	472

APPLICATIONS	WB, IP, IHC
SPECIES REACTIVITY	Human
AMOUNT	10 µl
CONCENTRATION	1000 µg/ml
STORAGE/SHELF LIFE	2 - 8°C / 1 year from date of receipt
PHYSICAL STATE	Liquid
BUFFER	Tris-citrate/phosphate buffer, pH 7 to 8 containing 0.09% Sodium Azide
ISOTYPE	IgG
ORIGIN	USA
PRODUCTION PROCEDURES	Antibody was affinity purified using an epitope specific to MAD2 immobilized on solid support.

The epitope recognized by A300-299A maps to a region between residues 2550 and 2600 of human ataxia telangiectasia mutated using the numbering given in SwissProt entry Q13315 (GeneID 472).

Immunoglobulin concentration was determined using Beer's Law where 1mg/mL IgG has an A280 of 1.4.

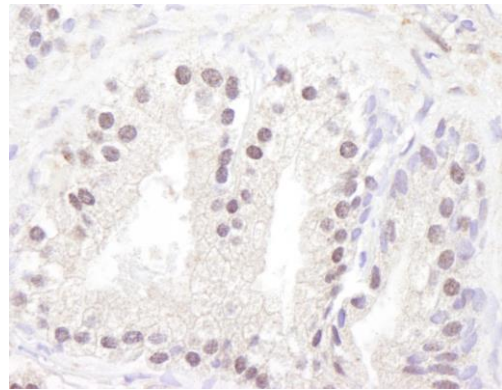
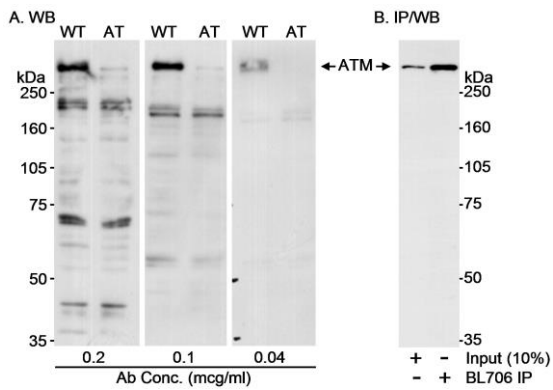
APPLICATIONS Centrifuge tube to remove product from lid. Optimal working dilutions should be determined experimentally by the investigator. Prepare working dilution immediately before use.

Western Blot	1:5000 - 1:25,000 (3-8% Tris-acetate gel recommended)
Immunoprecipitation	6 µg/mg lysate
Immunohistochemistry	1:500 - 1:2000. Epitope retrieval is not recommended.

IHC HUMAN CONTROLS Prostate

ADDITIONAL INFO <https://www.fortislife.com/p/A300-299A-T>
Use the link above to view SDS, a current list of citations, and other product specific information.

This document certifies that this product has met all of the quality control standards defined by Bethyl Laboratories, Inc.
Michael Spencer, PhD Date: January 31, 2024



Detection of human ATM by western blot and immunoprecipitation. *Samples:* A) Whole cell lysate (50 μ g) from human L-40 (WT) or AT-59 (AT) cells. B) Whole cell lysate (1 mg) from WT cells. *Antibody:* Affinity purified rabbit anti-ATM antibody BL706 (Cat. No. A300-299A) used at the indicated concentrations for WB and at 0.5 μ g/mg lysate for IP. Immunoprecipitated ATM was blotted with a monoclonal antibody to ATM. *Detection:* Chemiluminescence with an exposure time of 30 seconds.

Detection of human ATM by immunohistochemistry. *Sample:* FFPE section of human prostate-nodular hypertrophy. *Antibody:* Affinity purified rabbit anti-ATM (Cat. No. A300-299A) used at a dilution of 1:1,000 (1 μ g/ml). *Detection:* DAB