



# SZABO SCANDIC

Part of Europa Biosite

## Produktinformation



Forschungsprodukte & Biochemikalien



Zellkultur & Verbrauchsmaterial



Diagnostik & molekulare Diagnostik



Laborgeräte & Service

Weitere Information auf den folgenden Seiten!  
See the following pages for more information!



### Lieferung & Zahlungsart

siehe unsere [Liefer- und Versandbedingungen](#)

### Zuschläge

- Mindermengenzuschlag
- Trockeneiszuschlag
- Gefahrgutzuschlag
- Expressversand

### SZABO-SCANDIC HandelsgmbH

Quellenstraße 110, A-1100 Wien

T. +43(0)1 489 3961-0

F. +43(0)1 489 3961-7

[mail@szabo-scandic.com](mailto:mail@szabo-scandic.com)

[www.szabo-scandic.com](http://www.szabo-scandic.com)

[linkedin.com/company/szaboscandic](https://www.linkedin.com/company/szaboscandic) 

# ATM Antibody

Rabbit Polyclonal

Antigen Affinity Purified

Protein ID Q13315

Catalog No. A300-299A

GeneID 472

Lot No. A300-299A-2



<b>APPLICATIONS</b>	WB, IP, IHC
<b>SPECIES REACTIVITY</b>	Human
<b>AMOUNT</b>	100 µl
<b>CONCENTRATION</b>	1000 µg/ml
<b>STORAGE/SHELF LIFE</b>	2 - 8° C / 1 year from date of receipt
<b>PHYSICAL STATE</b>	Liquid
<b>BUFFER</b>	Tris-citrate/phosphate buffer, pH 7 to 8 containing 0.09% Sodium Azide
<b>ISOTYPE</b>	IgG
<b>ORIGIN</b>	USA
<b>PRODUCTION PROCEDURES</b>	Antibody was affinity purified using an epitope specific to MAD2 immobilized on solid support.

The epitope recognized by A300-299A maps to a region between residues 2550 and 2600 of human ataxia telangiectasia mutated using the numbering given in SwissProt entry Q13315 (GeneID 472).

Immunoglobulin concentration was determined by extinction coefficient: absorbance at 280 nm of 1.4 equals 1.0 mg of IgG.

**APPLICATIONS** Centrifuge tube to remove product from lid. Optimal working dilutions should be determined experimentally by the investigator. Prepare working dilution immediately before use.

Western Blot 1:5,000 - 1:25,000

Immunoprecipitation 3 - 7 µg/mg lysate

Immunohistochemistry 1:500 - 1:2,000. Epitope retrieval is not recommended.

**APPLICATION NOTES** Western blot of immunoprecipitates performed using Normal Pig Serum (Cat. No. S100-020), Goat anti-Rabbit Light Chain HRP Conjugate (Cat. No. A120-113P) and 3-8% SDS-PAGE (link to IP-western blot protocol in Additional Info section below).

Western blot of lysates performed using standard western blot reagents and 3-8% SDS-PAGE.

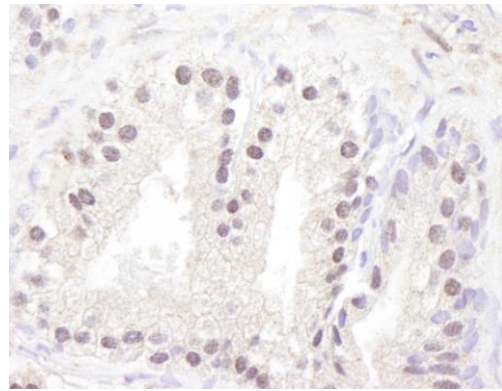
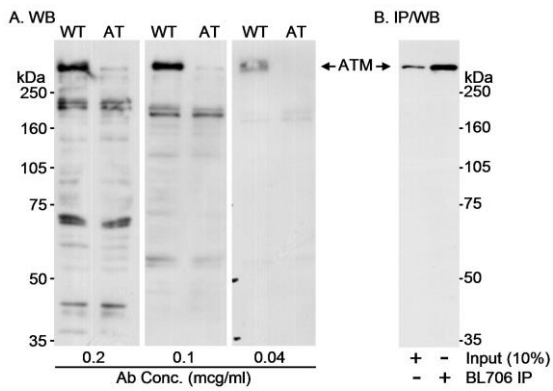
**IHC HUMAN CONTROLS** Prostate

**ADDITIONAL INFO** <https://www.bethyl.com/product/A300-299A>

Use the link above to view SDS, a current list of citations, and other product specific information.

IP-western blot protocol: [https://www.bethyl.com/content/protocol\\_IP\\_WB](https://www.bethyl.com/content/protocol_IP_WB)

This document certifies that this product has met all of the quality control standards defined by Bethyl Laboratories, Inc.  
Eric McIntush, PhD | Chief Scientific Officer Date: June 24, 2019



**Detection of human ATM by western blot and immunoprecipitation.** *Samples:* A) Whole cell lysate (50  $\mu$ g) from human L-40 (WT) or AT-59 (AT) cells. B) Whole cell lysate (1 mg) from WT cells. *Antibody:* Affinity purified rabbit anti-ATM antibody BL706 (Cat. No. A300-299A) used at the indicated concentrations for WB and at 0.5  $\mu$ g/mg lysate for IP. immunoprecipitated ATM was blotted with a monoclonal antibody to ATM. *Detection:* Chemiluminescence with an exposure time of 30 seconds.

**Detection of human ATM by immunohistochemistry.** *Sample:* FFPE section of human prostate-nodular hypertrophy. *Antibody:* Affinity purified rabbit anti-ATM (Cat. No. A300-299A) used at a dilution of 1:1,000 (1  $\mu$ g/ml). *Detection:* DAB