



SZABO SCANDIC

Part of Europa Biosite

Produktinformation



Forschungsprodukte & Biochemikalien



Zellkultur & Verbrauchsmaterial



Diagnostik & molekulare Diagnostik



Laborgeräte & Service

Weitere Information auf den folgenden Seiten!
See the following pages for more information!



Lieferung & Zahlungsart

siehe unsere [Liefer- und Versandbedingungen](#)

Zuschläge

- Mindermengenzuschlag
- Trockeneiszuschlag
- Gefahrgutzuschlag
- Expressversand

SZABO-SCANDIC HandelsgmbH

Quellenstraße 110, A-1100 Wien

T. +43(0)1 489 3961-0

F. +43(0)1 489 3961-7

mail@szabo-scandic.com

www.szabo-scandic.com

[linkedin.com/company/szaboscandic](https://www.linkedin.com/company/szaboscandic) 

MAD2 Antibody

Rabbit Polyclonal

Antigen Affinity Purified

Protein ID Q13257

Catalog No. A300-300A

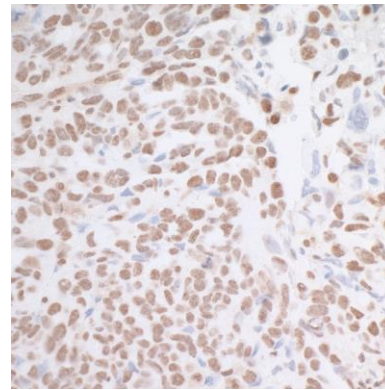
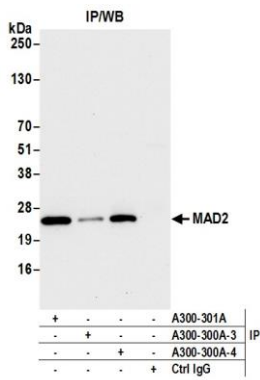
GeneID 4085

Lot No. A300-300A-4



| | |
|------------------------------|---|
| APPLICATIONS | IP, IHC |
| SPECIES REACTIVITY | Human |
| AMOUNT | 100 µl |
| CONCENTRATION | 1000 µg/ml |
| STORAGE/SHELF LIFE | 2 – 8° C / 1 year from date of receipt |
| PHYSICAL STATE | Liquid |
| BUFFER | Tris-citrate/phosphate buffer, pH 7 to 8 containing 0.09% Sodium Azide |
| ISOTYPE | IgG |
| ORIGIN | USA |
| PRODUCTION PROCEDURES | <p>Antibody was affinity purified using an epitope specific to MAD2 immobilized on solid support.</p> <p>The epitope recognized by A300-300A maps to a region between residues 100 and 150 of human Mitotic Arrest Deficient 2 using the numbering given in SwissProt entry Q13257 (GeneID 4085).</p> <p>Immunoglobulin concentration was determined by extinction coefficient: absorbance at 280 nm of 1.4 equals 1.0 mg of IgG.</p> |
| APPLICATIONS | <p>Centrifuge tube to remove product from lid. Optimal working dilutions should be determined experimentally by the investigator. Prepare working dilution immediately before use.</p> <p>Western Blot Not recommended. Use rabbit anti-MAD2 antibody A300-301A.</p> <p>Immunoprecipitation 2 – 10 µg/mg lysate</p> <p>Immunohistochemistry 1:1,000 to 1:5,000. Epitope retrieval with citrate buffer pH6.0 is recommended for FFPE tissue sections.</p> |
| APPLICATION NOTES | Western blot of immunoprecipitates performed using Normal Pig Serum (Cat. No. S100-020), Goat anti-Rabbit Light Chain HRP Conjugate (Cat. No. A120-113P) and 4-20% SDS-PAGE (link to IP-western blot protocol in Additional Info section below). |
| IHC HUMAN CONTROLS | Breast Carcinoma, Ovarian Carcinoma, Prostate Carcinoma |
| ADDITIONAL INFO | <p>https://www.bethyl.com/product/A300-300A</p> <p>Use the link above to view SDS, a current list of citations, and other product specific information. IP-western blot protocol https://www.bethyl.com/content/protocol_IP_WB</p> |

This document certifies that this product has met all of the quality control standards defined by Bethyl Laboratories, Inc.
Eric McIntush, PhD | Chief Scientific Officer Date: October 1, 2019



Detection of human MAD2 by western blot of immunoprecipitates. *Samples:* Whole cell lysate (1.0 mg per IP reaction; 20% of IP loaded) from HEK293T cells prepared using NETN lysis buffer. *Antibodies:* Affinity purified Rabbit anti-MAD2 antibody A300-300A (lot A300-300A-4) used for IP at 6 μ g per reaction. MAD2 was also immunoprecipitated by a previous lot of this antibody (lot A300-300A-3) and rabbit anti-MAD2 antibody A300-301A. For blotting immunoprecipitated MAD2, A300-301A was used at 0.1 μ g/ml. *Detection:* Chemiluminescence with an exposure time of 10 seconds.

Detection of human MAD2 by immunohistochemistry. *Sample:* FFPE section of human ovarian carcinoma. *Antibody:* Affinity purified rabbit anti-MAD2 (Cat. No. A300-300A lot 4) used at a dilution of 1:5,000 (0.2 μ g/ml). *Detection:* DAB