



# SZABO SCANDIC

Part of Europa Biosite

## Produktinformation



Forschungsprodukte & Biochemikalien



Zellkultur & Verbrauchsmaterial



Diagnostik & molekulare Diagnostik



Laborgeräte & Service

Weitere Information auf den folgenden Seiten!  
See the following pages for more information!



### Lieferung & Zahlungsart

siehe unsere [Liefer- und Versandbedingungen](#)

### Zuschläge

- Mindermengenzuschlag
- Trockeneiszuschlag
- Gefahrgutzuschlag
- Expressversand

### SZABO-SCANDIC HandelsgmbH

Quellenstraße 110, A-1100 Wien

T. +43(0)1 489 3961-0

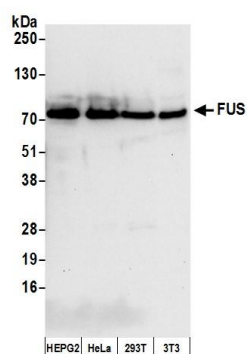
F. +43(0)1 489 3961-7

[mail@szabo-scandic.com](mailto:mail@szabo-scandic.com)

[www.szabo-scandic.com](http://www.szabo-scandic.com)

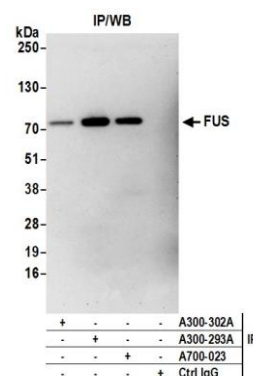
[linkedin.com/company/szaboscandic](https://www.linkedin.com/company/szaboscandic) 





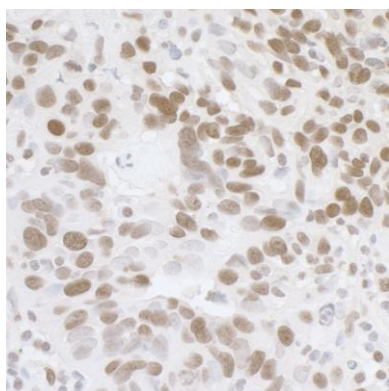
#### Detection of human and mouse FUS by western blot.

*Samples:* Whole cell lysate (50 µg) from Hep-G2, HeLa, HEK293T, and mouse NIH 3T3 cells prepared using NETN lysis buffer. *Antibody:* Affinity purified rabbit anti-FUS antibody A300-302A (lot A300-302A-4) used for WB at 0.04 µg/ml. *Detection:* Chemiluminescence with an exposure time of 10 seconds.



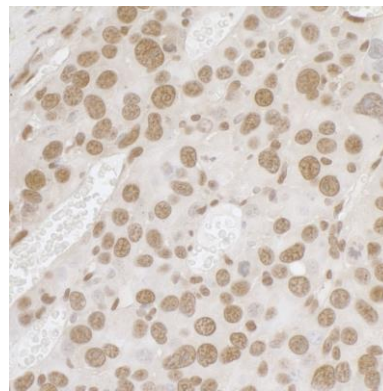
#### Detection of human FUS by western blot of immunoprecipitates.

*Samples:* Whole cell lysate (1.0 mg per IP reaction; 20% of IP loaded) from HEK293T cells prepared using NETN lysis buffer. *Antibodies:* Affinity purified rabbit anti-FUS antibody A300-302A (lot A300-293A-4) used for IP at 3 µg per reaction. FUS was also immunoprecipitated by rabbit anti-FUS recombinant monoclonal antibody [BLR023E] (A700-023) and rabbit anti-FUS antibody A300-293A. For blotting immunoprecipitated FUS, A700-023 was used at 1:1000. *Detection:* Chemiluminescence with an exposure time of 3 minutes.



#### Detection of human FUS by immunohistochemistry.

*Sample:* FFPE section of human ovarian carcinoma. *Antibody:* Affinity purified rabbit anti-FUS (Cat. No. A300-302A Lot4) used at a dilution of 1:1,000 (1 µg/ml). *Detection:* DAB



#### Detection of mouse FUS by immunohistochemistry.

*Sample:* FFPE section of mouse renal cells carcinoma. *Antibody:* Affinity purified rabbit anti-FUS (Cat. No. A300-302A Lot4) used at a dilution of 1:1,000 (1 µg/ml). *Detection:* DAB