



# SZABO SCANDIC

Part of Europa Biosite

## Produktinformation



Forschungsprodukte & Biochemikalien



Zellkultur & Verbrauchsmaterial



Diagnostik & molekulare Diagnostik



Laborgeräte & Service

Weitere Information auf den folgenden Seiten!  
See the following pages for more information!



### Lieferung & Zahlungsart

siehe unsere [Liefer- und Versandbedingungen](#)

### Zuschläge

- Mindermengenzuschlag
- Trockeneiszuschlag
- Gefahrgutzuschlag
- Expressversand

### SZABO-SCANDIC HandelsgmbH

Quellenstraße 110, A-1100 Wien

T. +43(0)1 489 3961-0

F. +43(0)1 489 3961-7

[mail@szabo-scandic.com](mailto:mail@szabo-scandic.com)

[www.szabo-scandic.com](http://www.szabo-scandic.com)

[linkedin.com/company/szaboscandic](https://www.linkedin.com/company/szaboscandic) 

# TAFII68 Antibody

Rabbit Polyclonal

Antigen Affinity Purified	RefSeq ID	NP_631961.1
Catalog No. A300-307A-T	Uniprot ID	Q92804
Lot No. 1	GeneID	8148

---

<b>APPLICATIONS</b>	WB, IP, IHC
<b>SPECIES REACTIVITY</b>	Human
<b>AMOUNT</b>	10 µl
<b>CONCENTRATION</b>	1000 µg/ml
<b>STORAGE/SHELF LIFE</b>	2 – 8°C / 1 year from date of receipt
<b>PHYSICAL STATE</b>	Liquid
<b>BUFFER</b>	Tris-citrate/phosphate buffer, pH 7 to 8 containing 0.09% Sodium Azide
<b>ISOTYPE</b>	IgG
<b>ORIGIN</b>	USA
<b>PRODUCTION PROCEDURES</b>	Antibody was affinity purified using an epitope specific to TAFII68 immobilized on solid support.

The epitope recognized by A300-307A maps to a region between residues 175 and 225 of human TAFII68 using the numbering given in Swiss-Prot entry Q92804 (GeneID 8148).

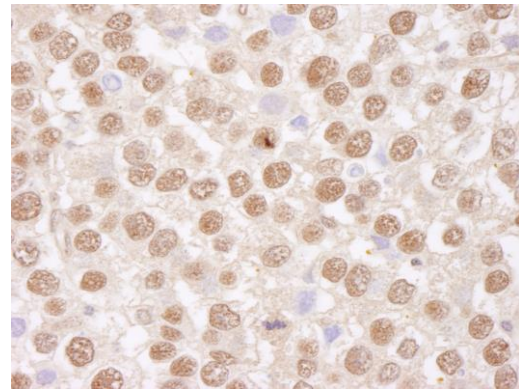
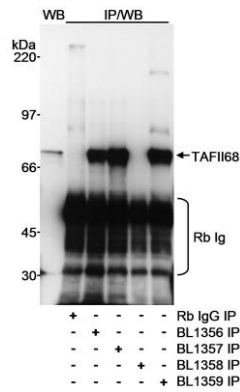
Immunoglobulin concentration was determined using Beer's Law where 1mg/mL IgG has an A280 of 1.4.

<b>APPLICATIONS</b>	Centrifuge tube to remove product from lid. Optimal working dilutions should be determined experimentally by the investigator. Prepare working dilution immediately before use.
	Western Blot 1:5000 – 1:20,000
	Immunoprecipitation 6 µg/mg lysate
	Immunohistochemistry 1:1000 – 1:5000. Epitope retrieval with citrate buffer pH 6.0 is recommended for FFPE tissue sections.

<b>IHC HUMAN CONTROLS</b>	Ovarian Carcinoma, Testicular Seminoma
---------------------------	--

<b>ADDITIONAL INFO</b>	<a href="https://www.fortislife.com/p/A300-307A-T">https://www.fortislife.com/p/A300-307A-T</a> Use the link above to view SDS, a current list of citations, and other product specific information.
------------------------	---

This document certifies that this product has met all of the quality control standards defined by Bethyl Laboratories, Inc.  
Michael Spencer, PhD Date: January 31, 2024



**Detection of human TAFII68 by western blot and immunoprecipitation.** *Samples:* Whole cell lysate (200  $\mu$ g for WB; 10 mg for IP/WB) from HEK293T cells. *Antibodies:* Affinity purified rabbit anti-TAFII68 antibody BL1356 (Cat. No. A300-307A) used at 0.1  $\mu$ g/ml for WB. TAFII68 was immunoprecipitated with rabbit anti-TAFII68 antibodies BL1356, BL1357 (Cat. No. A300-308A), BL1358 and BL1359 (Cat. No. A300-309A) using each at 0.3  $\mu$ g/mg lysate. *Detection:* Chemiluminescence with an exposure time of 5 seconds.

**Detection of human TAFII68 by immunohistochemistry.** *Sample:* FFPE section of human testicular seminoma. *Antibody:* Affinity purified rabbit anti-TAFII68 (Cat. No. A300-307A Lot1) used at a dilution of 1:5,000 (0.2  $\mu$ g/ml). *Detection:* DAB