



SZABO SCANDIC

Part of Europa Biosite

Produktinformation



Forschungsprodukte & Biochemikalien



Zellkultur & Verbrauchsmaterial



Diagnostik & molekulare Diagnostik



Laborgeräte & Service

Weitere Information auf den folgenden Seiten!
See the following pages for more information!



Lieferung & Zahlungsart

siehe unsere [Liefer- und Versandbedingungen](#)

Zuschläge

- Mindermengenzuschlag
- Trockeneiszuschlag
- Gefahrgutzuschlag
- Expressversand

SZABO-SCANDIC HandelsgmbH

Quellenstraße 110, A-1100 Wien

T. +43(0)1 489 3961-0

F. +43(0)1 489 3961-7

mail@szabo-scandic.com

www.szabo-scandic.com

[linkedin.com/company/szaboscandic](https://www.linkedin.com/company/szaboscandic) 

TAFII68 Antibody

Rabbit Polyclonal

Antigen Affinity Purified	Protein ID	Q92804
Catalog No. A300-307A	GeneID	8148
Lot No. A300-307A-1		



APPLICATIONS	WB, IP, IHC
SPECIES REACTIVITY	Human
AMOUNT	100 µl
CONCENTRATION	1000 µg/ml
STORAGE/SHELF LIFE	2 - 8° C / 1 year from date of receipt
PHYSICAL STATE	Liquid
BUFFER	Tris-citrate/phosphate buffer, pH 7 to 8 containing 0.09% Sodium Azide
ISOTYPE	IgG
ORIGIN	USA
PRODUCTION PROCEDURES	Antibody was affinity purified using an epitope specific to TAFII68 immobilized on solid support.

The epitope recognized by A300-307A maps to a region between residues 175 and 225 of human TAFII68 using the numbering given in Swiss-Prot entry Q92804 (GeneID 8148).

Immunoglobulin concentration was determined by extinction coefficient: absorbance at 280 nm of 1.4 equals 1.0 mg of IgG.

APPLICATIONS Centrifuge tube to remove product from lid. Optimal working dilutions should be determined experimentally by the investigator. Prepare working dilution immediately before use.

Western Blot 1:5,000 - 1:20,000

Immunoprecipitation 1 - 4 µg/mg lysate

Immunohistochemistry 1:1,000 - 1:5,000. Epitope retrieval with citrate buffer pH 6.0 is recommended for FFPE tissue sections.

APPLICATION NOTES Western blot of immunoprecipitates performed using Normal Pig Serum (Cat. No. S100-020), Goat anti-Rabbit Light Chain HRP Conjugate (Cat. No. A120-113P) and 4-8% SDS-PAGE (link to IP-western blot protocol in Additional Info section below).

Western blot of lysates performed using standard western blot reagents and 4-8% SDS-PAGE.

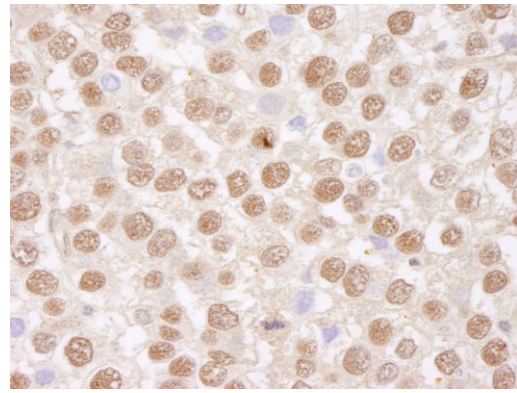
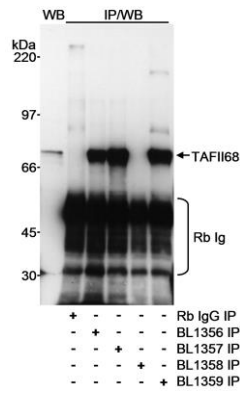
IHC HUMAN CONTROLS Ovarian Carcinoma, Testicular Seminoma

ADDITIONAL INFO <https://www.bethyl.com/product/A300-307A>

Use the link above to view SDS, a current list of citations, and other product specific information.

IP-western blot protocol: https://www.bethyl.com/content/protocol_IP_WB

This document certifies that this product has met all of the quality control standards defined by Bethyl Laboratories, Inc.
Eric McIntush, PhD | Chief Scientific Officer Date: June 21, 2019



Detection of human TAFII68 by western blot and immunoprecipitation. *Samples:* Whole cell lysate (200 μ g for WB; 10 mg for IP/WB) from HEK293T cells. *Antibodies:* Affinity purified rabbit anti-TAFII68 antibody BL1356 (Cat. No. A300-307A) used at 0.1 μ g/ml for WB. TAFII68 was immunoprecipitated with rabbit anti-TAFII68 antibodies BL1356, BL1357 (Cat. No. A300-308A), BL1358 and BL1359 (Cat. No. A300-309A) using each at 0.3 μ g/mg lysate. *Detection:* Chemiluminescence with an exposure time of 5 seconds.

Detection of human TAFII68 by immunohistochemistry. *Sample:* FFPE section of human testicular seminoma. *Antibody:* Affinity purified rabbit anti-TAFII68 (Cat. No. A300-307A Lot1) used at a dilution of 1:5,000 (0.2 μ g/ml). *Detection:* DAB