



SZABO SCANDIC

Part of Europa Biosite

Produktinformation



Forschungsprodukte & Biochemikalien



Zellkultur & Verbrauchsmaterial



Diagnostik & molekulare Diagnostik



Laborgeräte & Service

Weitere Information auf den folgenden Seiten!
See the following pages for more information!



Lieferung & Zahlungsart

siehe unsere [Liefer- und Versandbedingungen](#)

Zuschläge

- Mindermengenzuschlag
- Trockeneiszuschlag
- Gefahrgutzuschlag
- Expressversand

SZABO-SCANDIC HandelsgmbH

Quellenstraße 110, A-1100 Wien

T. +43(0)1 489 3961-0

F. +43(0)1 489 3961-7

mail@szabo-scandic.com

www.szabo-scandic.com

[linkedin.com/company/szaboscandic](https://www.linkedin.com/company/szaboscandic) 

TAFII68 Antibody

Rabbit Polyclonal

Antigen Affinity Purified	RefSeq ID	NP_631961.1
Catalog No. A300-308A-T	Uniprot ID	Q92804
Lot No. 1	GeneID	8148

APPLICATIONS	WB, IP, IHC
SPECIES REACTIVITY	Human
AMOUNT	10 µl
CONCENTRATION	1000 µg/ml
STORAGE/SHELF LIFE	2 – 8°C / 1 year from date of receipt
PHYSICAL STATE	Liquid
BUFFER	Tris-citrate/phosphate buffer, pH 7 to 8 containing 0.09% Sodium Azide
ISOTYPE	IgG
ORIGIN	USA
PRODUCTION PROCEDURES	Antibody was affinity purified using an epitope specific to TAFII68 immobilized on solid support.

The epitope recognized by A300-308A maps to a region between residues 200 and 250 of human TAFII68 using the numbering given in Swiss-Prot entry Q92804 (GeneID 8148).

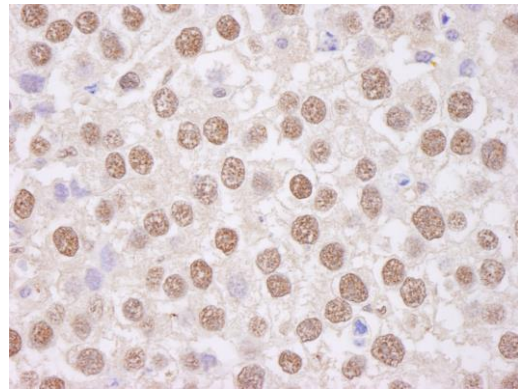
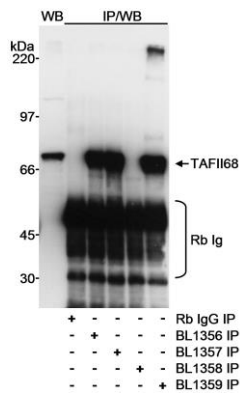
Immunoglobulin concentration was determined using Beer's Law where 1mg/mL IgG has an A280 of 1.4.

APPLICATIONS	Centrifuge tube to remove product from lid. Optimal working dilutions should be determined experimentally by the investigator. Prepare working dilution immediately before use.
	Western Blot 1:5000 – 1:20,000
	Immunoprecipitation 6 µg/mg lysate
	Immunohistochemistry 1:1000 – 1:5000. Epitope retrieval with citrate buffer pH 6.0 is recommended for FFPE tissue sections.

IHC HUMAN CONTROLS	Ovarian Carcinoma, Testicular Seminoma
---------------------------	--

ADDITIONAL INFO	https://www.fortislife.com/p/A300-308A-T Use the link above to view SDS, a current list of citations, and other product specific information.
------------------------	---

This document certifies that this product has met all of the quality control standards defined by Bethyl Laboratories, Inc.
Michael Spencer, PhD Date: January 31, 2024



Detection of human TAFII68 by western blot and immunoprecipitation. *Samples:* Whole cell lysate (200 μ g for WB; 10 mg for IP/WB) from HEK293T cells. *Antibodies:* Affinity purified rabbit anti-TAFII68 antibody BL1357 (Cat. No. A300-308A) used at 0.1 μ g/ml for WB. TAFII68 was immunoprecipitated with rabbit anti-TAFII68 antibodies BL1356 (Cat. No. A300-307A), BL1357, BL1358 and BL1359 (Cat. No. A300-309A) using each at 0.3 μ g/mg lysate. *Detection:* Chemiluminescence with an exposure time of 5 seconds.

Detection of human TAFII68 by immunohistochemistry. *Sample:* FFPE section of human testicular seminoma. *Antibody:* Affinity purified rabbit anti-TAFII68 (Cat. No. A300-308A Lot1) used at a dilution of 1:5,000 (0.2 μ g/ml). *Detection:* DAB