



# SZABO SCANDIC

Part of Europa Biosite

## Produktinformation



Forschungsprodukte & Biochemikalien



Zellkultur & Verbrauchsmaterial



Diagnostik & molekulare Diagnostik



Laborgeräte & Service

Weitere Information auf den folgenden Seiten!  
See the following pages for more information!



### Lieferung & Zahlungsart

siehe unsere [Liefer- und Versandbedingungen](#)

### Zuschläge

- Mindermengenzuschlag
- Trockeneiszuschlag
- Gefahrgutzuschlag
- Expressversand

### SZABO-SCANDIC HandelsgmbH

Quellenstraße 110, A-1100 Wien

T. +43(0)1 489 3961-0

F. +43(0)1 489 3961-7

[mail@szabo-scandic.com](mailto:mail@szabo-scandic.com)

[www.szabo-scandic.com](http://www.szabo-scandic.com)

[linkedin.com/company/szaboscandic](https://www.linkedin.com/company/szaboscandic) 

# CDK11 Antibody

Rabbit Polyclonal

Antigen Affinity Purified	RefSeq ID	NP_277071.2
Catalog No. A300-310A-T	Uniprot ID	Q9UQ88
Lot No. 2	GeneID	728642

---

<b>APPLICATIONS</b>	WB, IP
<b>SPECIES REACTIVITY</b>	Human
<b>PRESUMED REACTIVITY</b>	Based on 100% sequence identity, this antibody is predicted to react with Mouse
<b>AMOUNT</b>	10 µl
<b>CONCENTRATION</b>	1000 µg/ml
<b>STORAGE/SHELF LIFE</b>	2 – 8°C / 1 year from date of receipt
<b>PHYSICAL STATE</b>	Liquid
<b>BUFFER</b>	Tris-citrate/phosphate buffer, pH 7 to 8 containing 0.09% Sodium Azide
<b>ISOTYPE</b>	IgG
<b>ORIGIN</b>	USA
<b>PRODUCTION PROCEDURES</b>	Antibody was affinity purified using an epitope specific to CDK11 immobilized on solid support.

The epitope recognized by A300-310A maps to a region between residues 50 and 100 of human Cell Division Cycle 2-like 2 using the numbering given in SwissProt entry Q9UQ88 (GeneID 728642). The epitope that is recognized by A300-310A is also found in CDC1L1 (Gene ID 984).

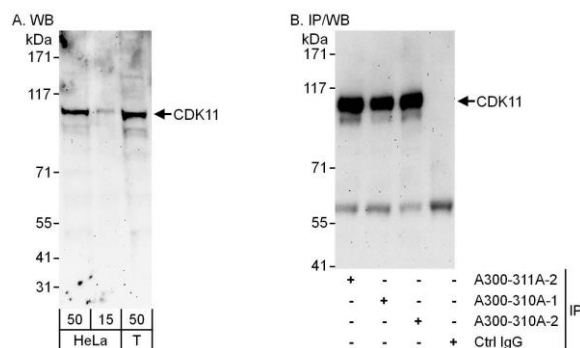
Immunoglobulin concentration was determined using Beer's Law where 1mg/mL IgG has an A280 of 1.4.

**APPLICATIONS** Centrifuge tube to remove product from lid. Optimal working dilutions should be determined experimentally by the investigator. Prepare working dilution immediately before use.

Western Blot	1:1000 – 1:5000
Immunoprecipitation	6 µg/mg lysate

**ADDITIONAL INFO** <https://www.fortislife.com/p/A300-310A-T>  
Use the link above to view SDS, a current list of citations, and other product specific information.

This document certifies that this product has met all of the quality control standards defined by Bethyl Laboratories, Inc.  
Michael Spencer, PhD Date: January 31, 2024



**Detection of human CDK11 by western blot and immunoprecipitation.** *Samples:* Whole cell lysate from HeLa (15 and 50  $\mu$ g for WB; 1 mg for IP, 20% of IP loaded) and HEK293T (T; 50  $\mu$ g) cells. *Antibodies:* Affinity purified rabbit anti-CDK11 antibody A300-310A (lot A300-310A-2) used for WB at 1  $\mu$ g/ml (A) and used for IP at 6  $\mu$ g/mg lysate. CDK11 was also immunoprecipitated by a previous lot (lot A300-310A-1) of this antibody and by rabbit anti-CDK11 antibody A300-311A (lot A300-311A-2), which recognizes a downstream epitope. For blotting immunoprecipitated CDK11, A300-311A was used at 1  $\mu$ g/ml. *Detection:* Chemiluminescence with exposure times of 3 minutes (A and B).