



SZABO SCANDIC

Part of Europa Biosite

Produktinformation



Forschungsprodukte & Biochemikalien



Zellkultur & Verbrauchsmaterial



Diagnostik & molekulare Diagnostik



Laborgeräte & Service

Weitere Information auf den folgenden Seiten!
See the following pages for more information!



Lieferung & Zahlungsart

siehe unsere [Liefer- und Versandbedingungen](#)

Zuschläge

- Mindermengenzuschlag
- Trockeneiszuschlag
- Gefahrgutzuschlag
- Expressversand

SZABO-SCANDIC HandelsgmbH

Quellenstraße 110, A-1100 Wien

T. +43(0)1 489 3961-0

F. +43(0)1 489 3961-7

mail@szabo-scandic.com

www.szabo-scandic.com

[linkedin.com/company/szaboscandic](https://www.linkedin.com/company/szaboscandic) 

CDK11 Antibody

Rabbit Polyclonal

Antigen Affinity Purified RefSeq ID NP_001300825.1

Catalog No. A300-311A Uniprot ID Q9UQ88

Lot No. A300-311A-4 GeneID 728642

APPLICATIONS WB, IP, IHC
SPECIES REACTIVITY Human
PRESUMED REACTIVITY Based on 100% sequence identity, this antibody is predicted to react with Mouse

AMOUNT 100 µl

CONCENTRATION 1000 µg/ml

STORAGE/SHELF LIFE 2 – 8°C / 1 year from date of receipt

PHYSICAL STATE Liquid

BUFFER Tris-citrate/phosphate buffer, pH 7 to 8 containing 0.09% Sodium Azide

ISOTYPE IgG

ORIGIN USA

PRODUCTION PROCEDURES Antibody was affinity purified using an epitope specific to CDK11 immobilized on solid support.

The epitope recognized by A300-311A maps to a region between residues 730 and the C-terminus (residue 780) of human Cell Division Cycle 2-like 2 using the numbering given in SwissProt entry Q9UQ88 (GeneID 728642). The epitope that is recognized by A300-311A is also found in CDC11L1 (Gene ID 984).

Immunoglobulin concentration was determined by extinction coefficient: absorbance at 280 nm of 1.4 equals 1.0 mg of IgG.

APPLICATIONS Centrifuge tube to remove product from lid. Optimal working dilutions should be determined experimentally by the investigator. Prepare working dilution immediately before use.

Western Blot 1:2,000 – 1:10,000

Immunoprecipitation 2 – 10 µg/mg lysate

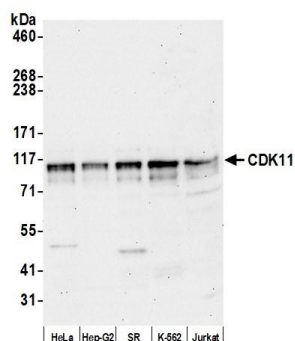
Immunohistochemistry 1:1,000 to 1:5,000. Epitope retrieval with citrate buffer pH6.0 is recommended for FFPE tissue sections.

IHC HUMAN CONTROLS Linitis Plastica Stomach Cancer, Ovarian Carcinoma, Prostate Carcinoma, Stomach Adenocarcinoma

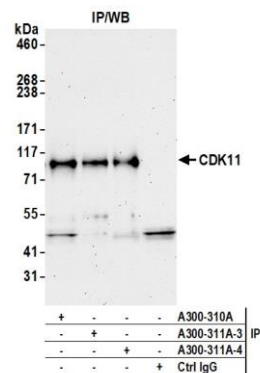
ADDITIONAL INFO <https://www.fortislife.com/p/A300-311A>

Use the link above to view SDS, a current list of citations, and other product specific information.

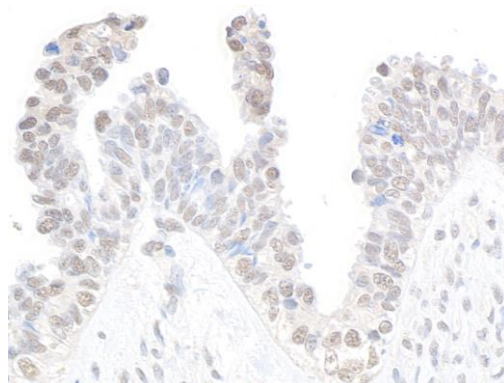
This document certifies that this product has met all of the quality control standards defined by Bethyl Laboratories, Inc.
Michael Spencer, PhD Date: February 7, 2023



Detection of human CDK11 by western blot. *Samples:* Whole cell lysate (5 μ g) from HeLa, Hep-G2, SR, K-562, and Jurkat cells prepared using NETN lysis buffer. *Antibody:* Affinity purified rabbit anti-CDK11 antibody (A300-311A lot 4) used for WB at 0.1 μ g/ml. *Detection:* Chemiluminescence with an exposure time of 30 seconds.



Detection of human CDK11 by western blot of immunoprecipitates. *Samples:* Whole cell lysate (1.0 mg per IP reaction; 10% of IP loaded) from HeLa cells prepared using NETN lysis buffer. *Antibodies:* Affinity purified rabbit anti-CDK11 antibody (A300-311A lot 4) used for IP at 6 μ g per reaction. CDK11 was also immunoprecipitated by a previous lot of this antibody (A300-311A lot 3) and a second antibody against a different epitope of CDK11 (A300-310A). For blotting immunoprecipitated CDK11, A300-311A was used at 0.1 μ g/ml. *Detection:* Chemiluminescence with an exposure time of 75 seconds.



Detection of human CDK11 by immunohistochemistry. *Sample:* FFPE section of human ovarian carcinoma. *Antibody:* Affinity purified rabbit anti-CDK11 (A300-311A lot 4) used at a dilution of 1:5,000 (0.2 μ g/ml). *Detection:* DAB