



SZABO SCANDIC

Part of Europa Biosite

Produktinformation



Forschungsprodukte & Biochemikalien



Zellkultur & Verbrauchsmaterial



Diagnostik & molekulare Diagnostik



Laborgeräte & Service

Weitere Information auf den folgenden Seiten!
See the following pages for more information!



Lieferung & Zahlungsart

siehe unsere [Liefer- und Versandbedingungen](#)

Zuschläge

- Mindermengenzuschlag
- Trockeneiszuschlag
- Gefahrgutzuschlag
- Expressversand

SZABO-SCANDIC HandelsgmbH

Quellenstraße 110, A-1100 Wien

T. +43(0)1 489 3961-0

F. +43(0)1 489 3961-7

mail@szabo-scandic.com

www.szabo-scandic.com

[linkedin.com/company/szaboscandic](https://www.linkedin.com/company/szaboscandic) 

KIAA0460 Antibody

Goat Polyclonal

Antigen Affinity Purified

Protein ID Q5VT52

Catalog No. A300-315A

GeneID 23248

Lot No. A300-315A-1



APPLICATIONS WB, IP

SPECIES REACTIVITY Human

AMOUNT 100 µl

CONCENTRATION 1000 µg/ml

STORAGE/SHELF LIFE 2 - 8° C / 1 year from date of receipt

PHYSICAL STATE Liquid

BUFFER Tris-citrate/phosphate buffer, pH 7 to 8 containing 0.09% Sodium Azide

ISOTYPE IgG

ORIGIN USA

PRODUCTION PROCEDURES Antibody was affinity purified using an epitope specific to KIAA0460 immobilized on solid support.

The epitope recognized by A300-315A maps to a region between residues 1000 and 1050 of human KIAA0460 using the numbering given in TrEMBL entry Q5VT52 (GeneID 23248).

Immunoglobulin concentration was determined by extinction coefficient: absorbance at 280 nm of 1.4 equals 1.0 mg of IgG.

APPLICATIONS Centrifuge tube to remove product from lid. Optimal working dilutions should be determined experimentally by the investigator. Prepare working dilution immediately before use.

Western Blot 1:1,000 - 1:10,000

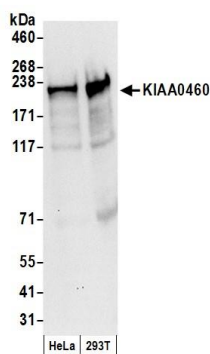
Immunoprecipitation 2 - 8 µg/mg lysate

APPLICATION NOTES Western blot of lysates performed using standard western blot reagents and 4-8% SDS-PAGE.

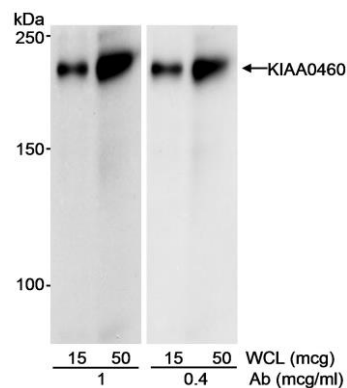
ADDITIONAL INFO <https://www.bethyl.com/product/A300-315A>

Use the link above to view SDS, a current list of citations, and other product specific information.

This document certifies that this product has met all of the quality control standards defined by Bethyl Laboratories, Inc.
Eric McIntush, PhD | Chief Scientific Officer Date: June 21, 2019



Detection of human KIAA0460 by western blot. Samples: Whole cell lysate (50 μ g) from HeLa and HEK293T cells prepared using NETN lysis buffer. **Antibody:** Affinity purified goat anti-KIAA0460 antibody A300-315A (lot A300-315A-1) used for WB at 0.1 μ g/ml. **Detection:** Chemiluminescence with an exposure time of 30 seconds.



Detection of human KIAA0460 by western blot. Samples: Whole cell lysate (15 and 50 μ g) from HEK293 cells. **Antibody:** Affinity purified goat anti-KIAA0460 antibody (Cat. No. A300-315A) used at 1 and 0.4 μ g/ml. **Detection:** Chemiluminescence with an exposure time of 1 minute.