



SZABO SCANDIC

Part of Europa Biosite

Produktinformation



Forschungsprodukte & Biochemikalien



Zellkultur & Verbrauchsmaterial



Diagnostik & molekulare Diagnostik



Laborgeräte & Service

Weitere Information auf den folgenden Seiten!
See the following pages for more information!



Lieferung & Zahlungsart

siehe unsere [Liefer- und Versandbedingungen](#)

Zuschläge

- Mindermengenzuschlag
- Trockeneiszuschlag
- Gefahrgutzuschlag
- Expressversand

SZABO-SCANDIC HandelsgmbH

Quellenstraße 110, A-1100 Wien

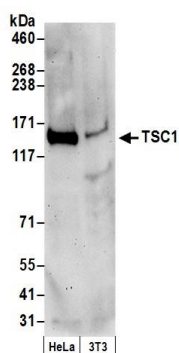
T. +43(0)1 489 3961-0

F. +43(0)1 489 3961-7

mail@szabo-scandic.com

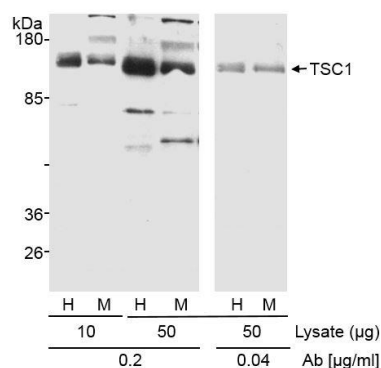
www.szabo-scandic.com

[linkedin.com/company/szaboscandic](https://www.linkedin.com/company/szaboscandic)



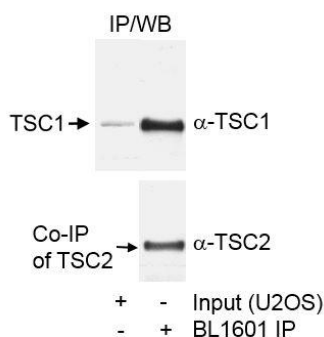
Detection of human and mouse TSC1 by western blot.

Samples: Whole cell lysate (50 μ g) from HeLa and mouse NIH 3T3 cells prepared using NETN lysis buffer. *Antibody:* Affinity purified goat anti-TSC1 antibody A300-316A (lot A300-316A-1) used for WB at 0.05 μ g/ml. *Detection:* Chemiluminescence with an exposure time of 3 minutes.



Detection of human and mouse TSC1 by western blot.

Samples: Whole cell lysate (10 or 50 μ g) from HeLa (H) and MEF (M) cells. *Antibody:* Affinity purified rabbit anti-TSC1 antibody A300-316A (lot A300-316A-1) used for WB at 0.2 or 0.04 μ g/ml. *Detection:* Chemiluminescence with an exposure time of 5 minutes.



Detection of human TSC1 by western blot of immunoprecipitates.

Samples: Whole cell lysate (60 μ g for input and 1.5 mg for IP) from U2OS cells. *Antibody:* Affinity purified rabbit anti-TSC1 antibody A300-316A (lot A300-316A-1) used for IP at 1 μ g/mg lysate. For blotting immunoprecipitated TSC1, A300-316A was used at 0.2 μ g/ml. *Detection:* Chemiluminescence with an exposure time of 30 seconds. Note: TSC2 co-immunoprecipitates with TSC1. TSC2 was detected using a TSC2 antibody from another source.