



SZABO SCANDIC

Part of Europa Biosite

Produktinformation



Forschungsprodukte & Biochemikalien



Zellkultur & Verbrauchsmaterial



Diagnostik & molekulare Diagnostik



Laborgeräte & Service

Weitere Information auf den folgenden Seiten!
See the following pages for more information!



Lieferung & Zahlungsart

siehe unsere [Liefer- und Versandbedingungen](#)

Zuschläge

- Mindermengenzuschlag
- Trockeneiszuschlag
- Gefahrgutzuschlag
- Expressversand

SZABO-SCANDIC HandelsgmbH

Quellenstraße 110, A-1100 Wien

T. +43(0)1 489 3961-0

F. +43(0)1 489 3961-7

mail@szabo-scandic.com

www.szabo-scandic.com

[linkedin.com/company/szaboscandic](https://www.linkedin.com/company/szaboscandic) 

Ubiquitin Antibody

Rabbit Polyclonal

Antigen Affinity Purified Protein ID P62988
Catalog No. A300-317A GeneID 7311
Lot No. A300-317A-1



APPLICATIONS	WB, IHC
SPECIES REACTIVITY	Human, Mouse, Bovine
PRESUMED REACTIVITY	Based on 100% sequence identity, this antibody is predicted to react with Rat, D. melanogaster, X. laevis, Chicken, Sheep, Dog, Horse, Rabbit, Guinea pig_10141, Pig, Cat, Gorilla and Chimpanzee
AMOUNT	100 µl
CONCENTRATION	1000 µg/ml
STORAGE/SHELF LIFE	2 - 8° C / 1 year from date of receipt
PHYSICAL STATE	Liquid
BUFFER	Tris-citrate/phosphate buffer, pH 7 to 8 containing 0.09% Sodium Azide
ISOTYPE	IgG
ORIGIN	USA
PRODUCTION PROCEDURES	Antibody was affinity purified using an epitope specific to Ubiquitin immobilized on solid support.

The epitope recognized by A300-317A maps to a region between residues 1 and 50 of human Ubiquitin using the numbering given in entry P62988.(GeneID 7311).

Immunoglobulin concentration was determined by extinction coefficient: absorbance at 280 nm of 1.4 equals 1.0 mg of IgG.

APPLICATIONS Centrifuge tube to remove product from lid. Optimal working dilutions should be determined experimentally by the investigator. Prepare working dilution immediately before use.

Western Blot 1:1,000 - 1:10,000

Immunohistochemistry 1:500 - 1:2,000. Epitope retrieval with Tris-EDTA pH 9.0 is recommended for FFPE tissue sections.

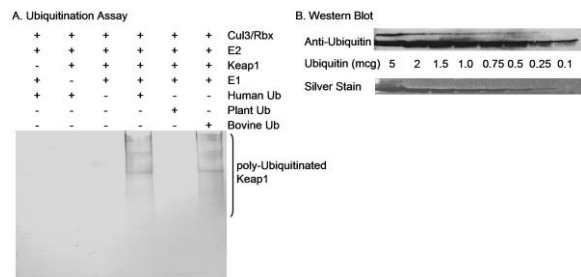
APPLICATION NOTES Western blot of lysates performed using standard western blot reagents and 4-12% SDS-PAGE.

IHC HUMAN CONTROLS Breast Carcinoma, Colon Carcinoma, Prostate Carcinoma

IHC MOUSE CONTROLS Teratoma

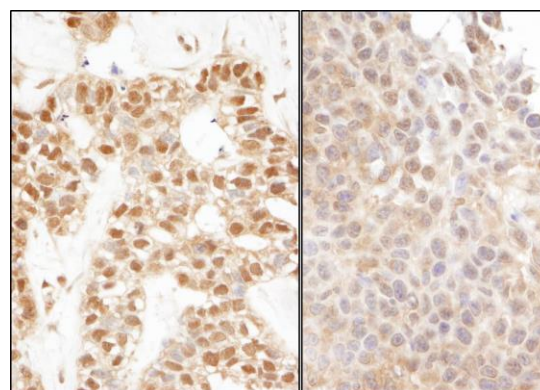
ADDITIONAL INFO <https://www.bethyl.com/product/A300-317A>
Use the link above to view SDS, a current list of citations, and other product specific information.

This document certifies that this product has met all of the quality control standards defined by Bethyl Laboratories, Inc.
Eric McIntush, PhD | Chief Scientific Officer Date: June 21, 2019



Detection of Ubiquitin by western blotting of Products from an Ubiquitination Assay and Purified Ubiquitin.

Samples: A) Ubiquitination assay was performed as described in Zhang et al., 2004, Mol. Cell. Biol. 24(24):10941-10953. B) Purified ubiquitin applied in decreasing amounts from 5 to 0.1 μg . **Antibody:** Affinity purified rabbit anti-Ubiquitin antibody (Cat. No. A300-317A) used at 0.4 $\mu\text{g}/\text{ml}$ for western blot. **Detection:** Alkaline phosphatase conjugated secondary antibody and development with NBT/BCIP for 10 minutes (A and B).



Detection of human and mouse Ubiquitin by immunohistochemistry. *Sample:* FFPE sections of human breast carcinoma (left) and mouse teratoma (right).

Antibody: Affinity purified rabbit anti-Ubiquitin (Cat. No. A300-317A Lot1) used at a dilution of 1:1,000 (1 $\mu\text{g}/\text{ml}$). **Detection:** DAB