



SZABO SCANDIC

Part of Europa Biosite

Produktinformation



Forschungsprodukte & Biochemikalien



Zellkultur & Verbrauchsmaterial



Diagnostik & molekulare Diagnostik



Laborgeräte & Service

Weitere Information auf den folgenden Seiten!
See the following pages for more information!



Lieferung & Zahlungsart

siehe unsere [Liefer- und Versandbedingungen](#)

Zuschläge

- Mindermengenzuschlag
- Trockeneiszuschlag
- Gefahrgutzuschlag
- Expressversand

SZABO-SCANDIC HandelsgmbH

Quellenstraße 110, A-1100 Wien

T. +43(0)1 489 3961-0

F. +43(0)1 489 3961-7

mail@szabo-scandic.com

www.szabo-scandic.com

[linkedin.com/company/szaboscandic](https://www.linkedin.com/company/szaboscandic) 

RFC1 Antibody

Rabbit Polyclonal

Antigen Affinity Purified

Protein ID NP_002904.3

Catalog No. A300-320A

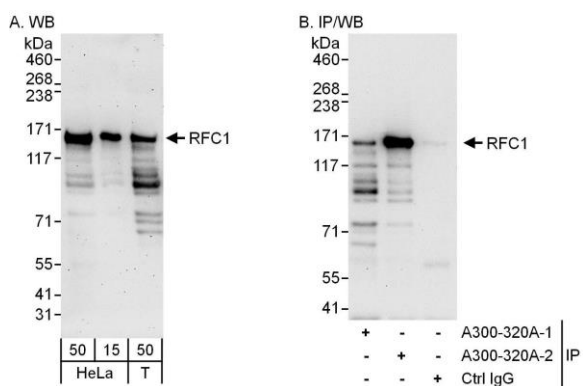
GeneID 5981

Lot No. A300-320A-2



APPLICATIONS	WB
SPECIES REACTIVITY	Human
AMOUNT	100 µl
CONCENTRATION	1000 µg/ml
STORAGE/SHELF LIFE	2 - 8° C / 1 year from date of receipt
PHYSICAL STATE	Liquid
BUFFER	Tris-citrate/phosphate buffer, pH 7 to 8 containing 0.09% Sodium Azide
ISOTYPE	IgG
ORIGIN	USA
PRODUCTION PROCEDURES	<p>Antibody was affinity purified using an epitope specific to RFC1 immobilized on solid support.</p> <p>The epitope recognized by A300-320A maps to a region between residue 1100 and the C-terminus (residue 1148) of human Replication Factor C subunit 1 using the numbering given in entry NP_002904.3 (GeneID 5981).</p> <p>Immunoglobulin concentration was determined by extinction coefficient: absorbance at 280 nm of 1.4 equals 1.0 mg of IgG.</p>
APPLICATIONS	<p>Centrifuge tube to remove product from lid. Optimal working dilutions should be determined experimentally by the investigator. Prepare working dilution immediately before use.</p> <p>Western Blot 1:1,000 - 1:10,000</p>
APPLICATION NOTES	Western blot of lysates performed using standard western blot reagents and 4-8% SDS-PAGE.
ADDITIONAL INFO	<p>https://www.bethyl.com/product/A300-320A</p> <p>Use the link above to view SDS, a current list of citations, and other product specific information.</p>

This document certifies that this product has met all of the quality control standards defined by Bethyl Laboratories, Inc.
Eric McIntush, PhD | Chief Scientific Officer Date: June 21, 2019



Detection of human RFC1 by western blot and immunoprecipitation. *Samples:* Whole cell lysate from HeLa (15 and 50 μg for WB; 1 mg for IP, 20% of IP loaded) and HEK293T (T; 50 μg) cells. *Antibodies:* Affinity purified rabbit anti-RFC1 antibody A300-320A (lot A300-320A-2) used for WB at 0.04 $\mu\text{g}/\text{ml}$ (A) and 0.4 $\mu\text{g}/\text{ml}$ (B) and used for IP at 6 $\mu\text{g}/\text{mg}$ lysate. RFC1 was also immunoprecipitated by a prior lot (lot A300-320A-1) of this antibody. *Detection:* Chemiluminescence with exposure times of 3 minutes (A) and 30 seconds (B).