



# SZABO SCANDIC

Part of Europa Biosite

## Produktinformation



Forschungsprodukte & Biochemikalien



Zellkultur & Verbrauchsmaterial



Diagnostik & molekulare Diagnostik



Laborgeräte & Service

Weitere Information auf den folgenden Seiten!  
See the following pages for more information!



### Lieferung & Zahlungsart

siehe unsere [Liefer- und Versandbedingungen](#)

### Zuschläge

- Mindermengenzuschlag
- Trockeneiszuschlag
- Gefahrgutzuschlag
- Expressversand

### SZABO-SCANDIC HandelsgmbH

Quellenstraße 110, A-1100 Wien

T. +43(0)1 489 3961-0

F. +43(0)1 489 3961-7

[mail@szabo-scandic.com](mailto:mail@szabo-scandic.com)

[www.szabo-scandic.com](http://www.szabo-scandic.com)

[linkedin.com/company/szaboscandic](https://www.linkedin.com/company/szaboscandic) 

# JLP Antibody

Rabbit Polyclonal

Antigen Affinity Purified

Protein ID NP\_003962.3

Catalog No. A300-336A

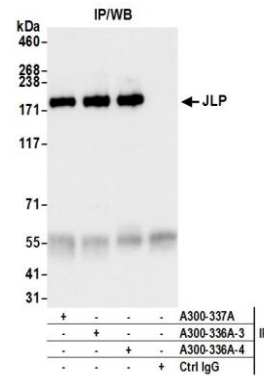
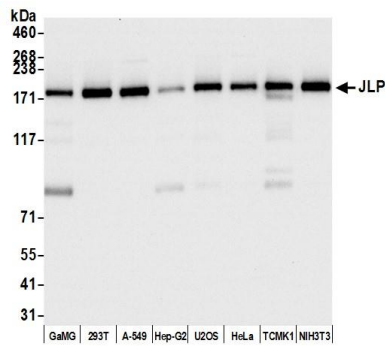
GeneID 9043

Lot No. A300-336A-4



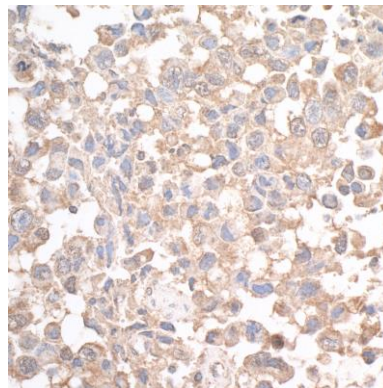
<b>APPLICATIONS</b>	WB, IP, IHC						
<b>SPECIES REACTIVITY</b>	Human, Mouse						
<b>AMOUNT</b>	100 µl						
<b>CONCENTRATION</b>	1000 µg/ml						
<b>STORAGE/SHELF LIFE</b>	2 - 8° C / 1 year from date of receipt						
<b>PHYSICAL STATE</b>	Liquid						
<b>BUFFER</b>	Tris-citrate/phosphate buffer, pH 7 to 8 containing 0.09% Sodium Azide						
<b>ISOTYPE</b>	IgG						
<b>ORIGIN</b>	USA						
<b>PRODUCTION PROCEDURES</b>	<p>Antibody was affinity purified using an epitope specific to JLP immobilized on solid support.</p> <p>The epitope recognized by A300-336A maps to a region between residue 1 and 50 of human JNK/SAPK-Associated Protein using the numbering given in entry NP_003962.3 (GeneID 9043).</p> <p>Immunoglobulin concentration was determined by extinction coefficient: absorbance at 280 nm of 1.4 equals 1.0 mg of IgG.</p>						
<b>APPLICATIONS</b>	<p>Centrifuge tube to remove product from lid. Optimal working dilutions should be determined experimentally by the investigator. Prepare working dilution immediately before use.</p> <table><tr><td>Western Blot</td><td>1:10,000 - 1:25,000</td></tr><tr><td>Immunoprecipitation</td><td>2 - 10 µg/mg lysate</td></tr><tr><td>Immunohistochemistry</td><td>1:500 - 1:2,000. Epitope retrieval with citrate buffer pH6.0 is recommended for FFPE tissue sections.</td></tr></table>	Western Blot	1:10,000 - 1:25,000	Immunoprecipitation	2 - 10 µg/mg lysate	Immunohistochemistry	1:500 - 1:2,000. Epitope retrieval with citrate buffer pH6.0 is recommended for FFPE tissue sections.
Western Blot	1:10,000 - 1:25,000						
Immunoprecipitation	2 - 10 µg/mg lysate						
Immunohistochemistry	1:500 - 1:2,000. Epitope retrieval with citrate buffer pH6.0 is recommended for FFPE tissue sections.						
<b>APPLICATION NOTES</b>	Western blot of lysates performed using standard western blot reagents and 4-8% SDS-PAGE.						
<b>IHC HUMAN CONTROLS</b>	Testicular Seminoma, Testis						
<b>ADDITIONAL INFO</b>	<p><a href="https://www.bethyl.com/product/A300-336A">https://www.bethyl.com/product/A300-336A</a></p> <p>Use the link above to view SDS, a current list of citations, and other product specific information.</p>						

This document certifies that this product has met all of the quality control standards defined by Bethyl Laboratories, Inc.  
Eric McIntush, PhD | Chief Scientific Officer Date: June 21, 2019



**Detection of human and mouse JLP by western blot.**  
*Samples:* Whole cell lysate (10 µg) from GaMG, HEK293T, A-549, Hep-G2, U2OS, HeLa, TCMK-1, and NIH 3T3 cells prepared using NETN lysis buffer. *Antibody:* Affinity purified rabbit anti-JLP antibody A300-336A (lot A300-336A-4) used for WB at 0.04 µg/ml. *Detection:* Chemiluminescence with an exposure time of 3 seconds.

**Detection of human JLP by western blot of immunoprecipitates.** *Samples:* Whole cell lysate (1.0 mg per IP reaction; 20% of IP loaded) from HEK293T cells prepared using NETN lysis buffer. *Antibodies:* Affinity purified rabbit anti-JLP antibody A300-336A (lot A300-336A-4) used for IP at 6 µg per reaction. JLP was also immunoprecipitated by a previous lot of this antibody (lot A300-336A-3) and rabbit anti-JLP antibody A300-337A. For blotting immunoprecipitated JLP, A300-336A was used at 0.1 µg/ml. *Detection:* Chemiluminescence with an exposure time of 1 second.



**Detection of human JLP by immunohistochemistry.**  
*Sample:* FFPE section of human seminoma. *Antibody:* Affinity purified rabbit anti-JLP antibody (A300-336A lot 4) used at 1:1000 (1 µg/ml). *Secondary:* HRP-conjugated goat anti-rabbit IgG (A120-501P). *Detection:* DAB