



# SZABO SCANDIC

Part of Europa Biosite

## Produktinformation



Forschungsprodukte & Biochemikalien



Zellkultur & Verbrauchsmaterial



Diagnostik & molekulare Diagnostik



Laborgeräte & Service

Weitere Information auf den folgenden Seiten!  
See the following pages for more information!



### Lieferung & Zahlungsart

siehe unsere [Liefer- und Versandbedingungen](#)

### Zuschläge

- Mindermengenzuschlag
- Trockeneiszuschlag
- Gefahrgutzuschlag
- Expressversand

### SZABO-SCANDIC HandelsgmbH

Quellenstraße 110, A-1100 Wien

T. +43(0)1 489 3961-0

F. +43(0)1 489 3961-7

[mail@szabo-scandic.com](mailto:mail@szabo-scandic.com)

[www.szabo-scandic.com](http://www.szabo-scandic.com)

[linkedin.com/company/szaboscandic](https://www.linkedin.com/company/szaboscandic)

# JLP Antibody

Rabbit Polyclonal

Antigen Affinity Purified

Protein ID NP\_003962.3

Catalog No. A300-337A-T

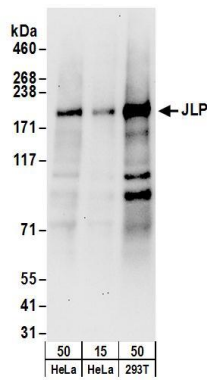
GeneID 9043

Lot No. A300-337A-T-2

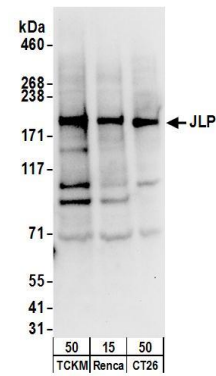


<b>APPLICATIONS</b>	WB, IP, IHC
<b>SPECIES REACTIVITY</b>	Human, Mouse
<b>AMOUNT</b>	20 µl (2 blots)
<b>CONCENTRATION</b>	100 µg/ml
<b>STORAGE/SHELF LIFE</b>	2 - 8° C / 1 year from date of receipt
<b>PHYSICAL STATE</b>	Liquid
<b>BUFFER</b>	Tris-buffered Saline containing 0.1% BSA and 0.09% Sodium Azide
<b>ISOTYPE</b>	IgG
<b>ORIGIN</b>	USA
<b>PRODUCTION PROCEDURES</b>	Antibody was affinity purified using an epitope specific to JLP immobilized on solid support.  The epitope recognized by A300-337A-T maps to a region between residue 775 and 825 of human JNK/SAPK-Associated Protein using the numbering given in entry NP_003962.3 (GeneID 9043).
<b>APPLICATIONS</b>	Centrifuge tube to remove product from lid. Optimal working dilutions should be determined experimentally by the investigator. Prepare working dilution immediately before use.  Western Blot 1:1000  Immunoprecipitation The antibody contained within A300-337-T has been qualified for use in immunoprecipitation; however, we recommend using the alternative formulation of this antibody found as product A300-337A.  Immunohistochemistry 1:50 - 1:200. Epitope retrieval with citrate buffer pH 6.0 is recommended for FFPE tissue sections.
<b>APPLICATION NOTES</b>	Western blot of lysates performed using standard western blot reagents and 4-8% SDS-PAGE.
<b>ADDITIONAL INFO</b>	<a href="https://www.bethyl.com/product/A300-337A-T">https://www.bethyl.com/product/A300-337A-T</a> Use the link above to view SDS, a current list of citations, and other product specific information.

This document certifies that this product has met all of the quality control standards defined by Bethyl Laboratories, Inc.  
Eric McIntush, PhD | Chief Scientific Officer Date: June 21, 2019



**Detection of human JLP by western blot.** *Samples:* Whole cell lysate from HeLa (15 and 50 µg) and HEK293T (50 µg) cells. *Antibody:* Affinity purified rabbit anti-JLP antibody A300-337A-T used at 1:1000. *Detection:* Chemiluminescence with an exposure time of 30 seconds.



**Detection of mouse JLP by western blot.** *Samples:* Whole cell lysate from TCKM (50µg), Renca (50µg), and CT26 (50 µg) cells. *Antibodies:* Affinity purified rabbit anti-JLP antibody A300-337A-T (lot A300-337A-T-2) used for WB at 1:1000. *Detection:* Chemiluminescence with an exposure time of 10 seconds.