



SZABO SCANDIC

Part of Europa Biosite

Produktinformation



Forschungsprodukte & Biochemikalien



Zellkultur & Verbrauchsmaterial



Diagnostik & molekulare Diagnostik



Laborgeräte & Service

Weitere Information auf den folgenden Seiten!
See the following pages for more information!



Lieferung & Zahlungsart

siehe unsere [Liefer- und Versandbedingungen](#)

Zuschläge

- Mindermengenzuschlag
- Trockeneiszuschlag
- Gefahrgutzuschlag
- Expressversand

SZABO-SCANDIC HandelsgmbH

Quellenstraße 110, A-1100 Wien

T. +43(0)1 489 3961-0

F. +43(0)1 489 3961-7

mail@szabo-scandic.com

www.szabo-scandic.com

[linkedin.com/company/szaboscandic](https://www.linkedin.com/company/szaboscandic) 

JLP Antibody

Rabbit Polyclonal

Antigen Affinity Purified

Protein ID NP_003962.3

Catalog No. A300-337A

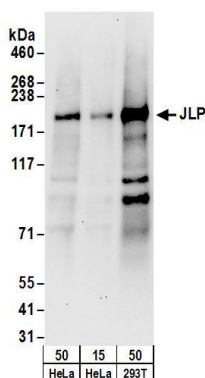
GeneID 9043

Lot No. A300-337A-2

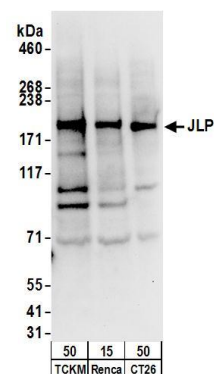


| | | | | | | | |
|------------------------------|--|--------------|--------------------|---------------------|--------------------|----------------------|--|
| APPLICATIONS | WB, IP, IHC | | | | | | |
| SPECIES REACTIVITY | Human, Mouse | | | | | | |
| AMOUNT | 100 µl | | | | | | |
| CONCENTRATION | 1000 µg/ml | | | | | | |
| STORAGE/SHELF LIFE | 2 - 8° C / 1 year from date of receipt | | | | | | |
| PHYSICAL STATE | Liquid | | | | | | |
| BUFFER | Tris-citrate/phosphate buffer, pH 7 to 8 containing 0.09% Sodium Azide | | | | | | |
| ISOTYPE | IgG | | | | | | |
| ORIGIN | USA | | | | | | |
| PRODUCTION PROCEDURES | <p>Antibody was affinity purified using an epitope specific to JLP immobilized on solid support.</p> <p>The epitope recognized by A300-337A maps to a region between residue 775 and 825 of human JNK/SAPK-Associated Protein using the numbering given in entry NP_003962.3 (GeneID 9043).</p> <p>Immunoglobulin concentration was determined by extinction coefficient: absorbance at 280 nm of 1.4 equals 1.0 mg of IgG.</p> | | | | | | |
| APPLICATIONS | <p>Centrifuge tube to remove product from lid. Optimal working dilutions should be determined experimentally by the investigator. Prepare working dilution immediately before use.</p> <table><tr><td>Western Blot</td><td>1:1,000 - 1:10,000</td></tr><tr><td>Immunoprecipitation</td><td>2 - 5 µg/mg lysate</td></tr><tr><td>Immunohistochemistry</td><td>1:500 - 1:2,000. Epitope retrieval with citrate buffer pH 6.0 is recommended for FFPE tissue sections.</td></tr></table> | Western Blot | 1:1,000 - 1:10,000 | Immunoprecipitation | 2 - 5 µg/mg lysate | Immunohistochemistry | 1:500 - 1:2,000. Epitope retrieval with citrate buffer pH 6.0 is recommended for FFPE tissue sections. |
| Western Blot | 1:1,000 - 1:10,000 | | | | | | |
| Immunoprecipitation | 2 - 5 µg/mg lysate | | | | | | |
| Immunohistochemistry | 1:500 - 1:2,000. Epitope retrieval with citrate buffer pH 6.0 is recommended for FFPE tissue sections. | | | | | | |
| APPLICATION NOTES | Western blot of lysates performed using standard western blot reagents and 4-8% SDS-PAGE. | | | | | | |
| IHC HUMAN CONTROLS | Testicular Seminoma | | | | | | |
| ADDITIONAL INFO | <p>https://www.bethyl.com/product/A300-337A</p> <p>Use the link above to view SDS, a current list of citations, and other product specific information.</p> | | | | | | |

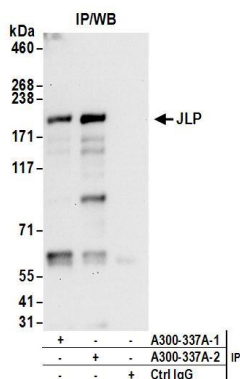
This document certifies that this product has met all of the quality control standards defined by Bethyl Laboratories, Inc.
Eric McIntush, PhD | Chief Scientific Officer Date: June 21, 2019



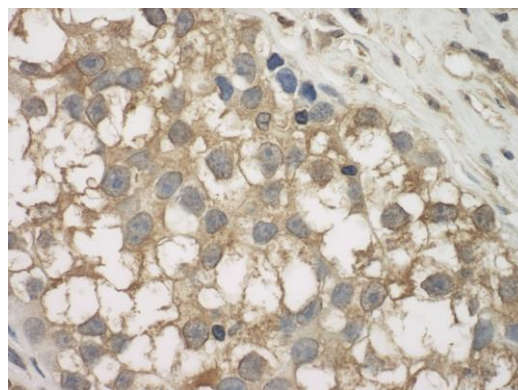
Detection of human JLP by western blot. *Samples:* Whole cell lysate from HeLa (15 and 50 µg) and HEK293T (50µg) cells. *Antibodies:* Affinity purified rabbit anti-JLP antibody A300-337A (lot A300-337A-2) used for WB at 0.1 µg/ml. *Detection:* Chemiluminescence with an exposure time of 30 seconds.



Detection of mouse JLP by western blot. *Samples:* Whole cell lysate from TCKM (50µg), Renca (50µg), and CT26 (50 µg) cells. *Antibodies:* Affinity purified rabbit anti-JLP antibody A300-337A (lot A300-337A-2) used for WB at 0.1 µg/ml. *Detection:* Chemiluminescence with an exposure time of 10 seconds.



Detection of human JLP by western blot of immunoprecipitates. *Samples:* Whole cell lysate (1 mg for IP; 20% of IP loaded) from HeLa cells. *Antibodies:* Affinity purified rabbit anti-JLP antibody A300-337A (lot A300-337A-2) used for IP at 6 µg/mg lysate. JLP was also immunoprecipitated by a previous lot (A300-337A-1) of this antibody. For blotting immunoprecipitated JLP, A300-337A was used at 1 µg/ml. *Detection:* Chemiluminescence with an exposure time of 30 seconds.



Detection of human JLP by immunohistochemistry. *Sample:* FFPE section of human testicular seminoma. *Antibody:* Affinity purified rabbit anti-JLP (Cat. No. A300-337A Lot2) used at a dilution of 1:1,000 (1 µg/ml). *Detection:* DAB