



# SZABO SCANDIC

Part of Europa Biosite

## Produktinformation



Forschungsprodukte & Biochemikalien



Zellkultur & Verbrauchsmaterial



Diagnostik & molekulare Diagnostik



Laborgeräte & Service

Weitere Information auf den folgenden Seiten!  
See the following pages for more information!



### Lieferung & Zahlungsart

siehe unsere [Liefer- und Versandbedingungen](#)

### Zuschläge

- Mindermengenzuschlag
- Trockeneiszuschlag
- Gefahrgutzuschlag
- Expressversand

### SZABO-SCANDIC HandelsgmbH

Quellenstraße 110, A-1100 Wien

T. +43(0)1 489 3961-0

F. +43(0)1 489 3961-7

[mail@szabo-scandic.com](mailto:mail@szabo-scandic.com)

[www.szabo-scandic.com](http://www.szabo-scandic.com)

[linkedin.com/company/szaboscandic](https://www.linkedin.com/company/szaboscandic) 

# MAD1 Antibody

Rabbit Polyclonal

Antigen Affinity Purified

Protein ID Q9Y6D9

Catalog No. A300-339A

GeneID 8379

Lot No. A300-339A-1



<b>APPLICATIONS</b>	WB, IP, IHC
<b>SPECIES REACTIVITY</b>	Human
<b>AMOUNT</b>	100 µl
<b>CONCENTRATION</b>	1000 µg/ml
<b>STORAGE/SHELF LIFE</b>	2 - 8° C / 1 year from date of receipt
<b>PHYSICAL STATE</b>	Liquid
<b>BUFFER</b>	Tris-citrate/phosphate buffer, pH 7 to 8 containing 0.09% Sodium Azide
<b>ISOTYPE</b>	IgG
<b>ORIGIN</b>	USA
<b>PRODUCTION PROCEDURES</b>	Antibody was affinity purified using an epitope specific to MAD1 immobilized on solid support.

The epitope recognized by A300-339A maps to a region between residues 1 and 50 of human Mitotic arrest deficient-like 1 using the numbering given in Swiss-Prot entry Q9Y6D9 (GeneID 8379).

Immunoglobulin concentration was determined by extinction coefficient: absorbance at 280 nm of 1.4 equals 1.0 mg of IgG.

**APPLICATIONS** Centrifuge tube to remove product from lid. Optimal working dilutions should be determined experimentally by the investigator. Prepare working dilution immediately before use.

Western Blot 1:5,000 - 1:15,000

Immunoprecipitation 1 - 4 µg/mg lysate

Immunohistochemistry 1:500 - 1:2,000. Epitope retrieval with citrate buffer pH 6.0 is recommended for FFPE tissue sections.

**APPLICATION NOTES** Western blot of immunoprecipitates performed using Normal Pig Serum (Cat. No. S100-020), Goat anti-Rabbit Light Chain HRP Conjugate (Cat. No. A120-113P) and 4-8% SDS-PAGE (link to IP-western blot protocol in Additional Info section below).

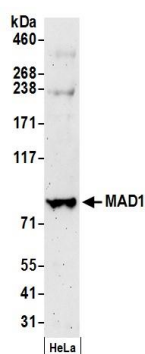
**IHC HUMAN CONTROLS** Western blot of lysates performed using standard western blot reagents and 4-8% SDS-PAGE. Breast Carcinoma, Laryngeal Squamous Cell Carcinoma, Prostate Carcinoma

**ADDITIONAL INFO** <https://www.bethyl.com/product/A300-339A>

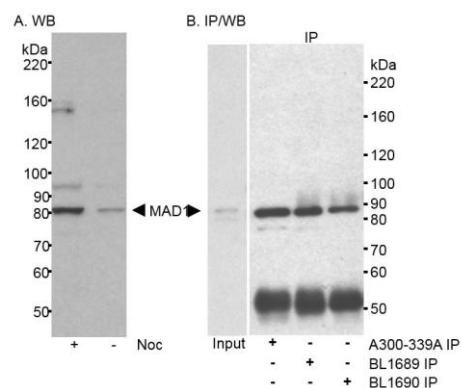
Use the link above to view SDS, a current list of citations, and other product specific information.

IP-western blot protocol: [https://www.bethyl.com/content/protocol\\_IP\\_WB](https://www.bethyl.com/content/protocol_IP_WB)

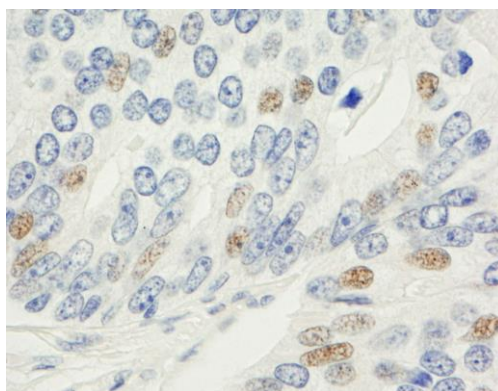
This document certifies that this product has met all of the quality control standards defined by Bethyl Laboratories, Inc.  
Eric McIntush, PhD | Chief Scientific Officer Date: June 21, 2019



**Detection of human MAD1 by western blot.** *Samples:* Whole cell lysate (50  $\mu$ g) from HeLa cells prepared using NETN lysis buffer. *Antibody:* Affinity purified rabbit anti-MAD1 antibody A300-339A (lot A300-339A-1) used for WB at 0.06  $\mu$ g/ml. *Detection:* Chemiluminescence with an exposure time of 3 minutes.



**Detection of human MAD1 by western blot and immunoprecipitation.** *Samples:* Whole cell lysate (50  $\mu$ g/lane in A; 50  $\mu$ g input in B, 1 mg for IP in B) from HeLa cells. In A, HeLa cells were treated with Nocodazole (+) or mock treated (-). *Antibody:* Affinity purified rabbit anti-MAD1 antibody A300-339A used at 0.1  $\mu$ g/ml for western blot (A) and at 1  $\mu$ g/mg lysate for IP (B). MAD1 was also immunoprecipitated using rabbit anti-MAD1 antibodies BL1689 and BL1690 using 1  $\mu$ g/mg lysate. In B, MAD1 in input and immunoprecipitate was detected using BL1689 at 0.2  $\mu$ g/ml. *Detection:* Chemiluminescence with exposure times of 10 minutes (A) and 5 minutes (B).



**Detection of human MAD1 by immunohistochemistry.**  
*Sample:* FFPE section of human prostate carcinoma.  
*Antibody:* Affinity purified rabbit anti-MAD1 (Cat. No. A300-339A Lot1) used at a dilution of 1:1,000 (1  $\mu$ g/ml).  
*Detection:* DAB