



# SZABO SCANDIC

Part of Europa Biosite

## Produktinformation



Forschungsprodukte & Biochemikalien



Zellkultur & Verbrauchsmaterial



Diagnostik & molekulare Diagnostik



Laborgeräte & Service

Weitere Information auf den folgenden Seiten!  
See the following pages for more information!



### Lieferung & Zahlungsart

siehe unsere [Liefer- und Versandbedingungen](#)

### Zuschläge

- Mindermengenzuschlag
- Trockeneiszuschlag
- Gefahrgutzuschlag
- Expressversand

### SZABO-SCANDIC HandelsgmbH

Quellenstraße 110, A-1100 Wien

T. +43(0)1 489 3961-0

F. +43(0)1 489 3961-7

[mail@szabo-scandic.com](mailto:mail@szabo-scandic.com)

[www.szabo-scandic.com](http://www.szabo-scandic.com)

[linkedin.com/company/szaboscandic](https://www.linkedin.com/company/szaboscandic) 

# p14ARF Antibody

Rabbit Polyclonal

Antigen Affinity Purified

Protein ID Q8N726

Catalog No. A300-340A

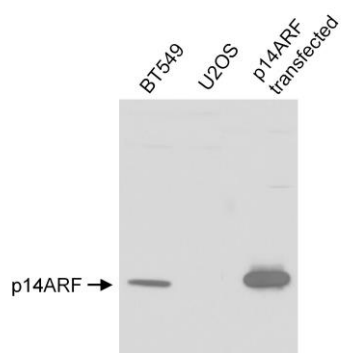
GeneID 1029

Lot No. A300-340A-2

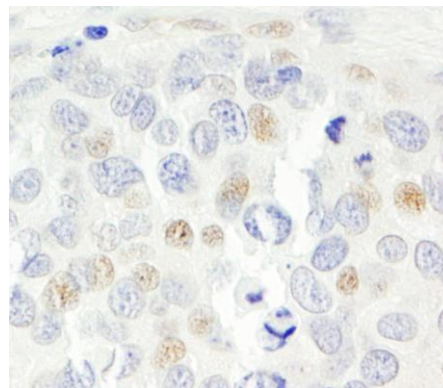


<b>APPLICATIONS</b>	WB, IHC
<b>SPECIES REACTIVITY</b>	Human
<b>AMOUNT</b>	100 µl
<b>CONCENTRATION</b>	1000 µg/ml
<b>STORAGE/SHELF LIFE</b>	2 - 8° C / 1 year from date of receipt
<b>PHYSICAL STATE</b>	Liquid
<b>BUFFER</b>	Tris-citrate/phosphate buffer, pH 7 to 8 containing 0.09% Sodium Azide
<b>ISOTYPE</b>	IgG
<b>ORIGIN</b>	USA
<b>PRODUCTION PROCEDURES</b>	Antibody was affinity purified using an epitope specific to p14ARF immobilized on solid support.  The epitope recognized by A300-340A maps to a region between residue 25 and 75 of human p14ARF using the numbering given in entry NP_478102.2 (GeneID 1029).  Immunoglobulin concentration was determined by extinction coefficient: absorbance at 280 nm of 1.4 equals 1.0 mg of IgG.
<b>APPLICATIONS</b>	Centrifuge tube to remove product from lid. Optimal working dilutions should be determined experimentally by the investigator. Prepare working dilution immediately before use.  Western Blot 1:500 - 1:2,500  Immunohistochemistry 1:500 - 1:2,000. Epitope retrieval with citrate buffer pH 6.0 is recommended for FFPE tissue sections.
<b>APPLICATION NOTES</b>	Western blot of lysates performed using standard western blot reagents and 4-12% SDS-PAGE.
<b>IHC HUMAN CONTROLS</b>	Breast Carcinoma, Prostate Carcinoma
<b>ADDITIONAL INFO</b>	<a href="https://www.bethyl.com/product/A300-340A">https://www.bethyl.com/product/A300-340A</a> Use the link above to view SDS, a current list of citations, and other product specific information.

This document certifies that this product has met all of the quality control standards defined by Bethyl Laboratories, Inc.  
Eric McIntush, PhD | Chief Scientific Officer Date: January 10, 2020



**Detection of human p14ARF by western blot.** *Samples:* Whole cell lysate (25  $\mu$ g) from BT549 (positive control), U2OS (negative control) and p14ARF transfected IMR90 cells. *Antibody:* Affinity purified rabbit anti-p14ARF (Cat. No. A300-340A) used for WB at 1  $\mu$ g/ml. *Detection:* Chemiluminescence.



**Detection of human p14ARF by immunohistochemistry.** *Sample:* FFPE section of human prostate carcinoma. *Antibody:* Affinity purified rabbit anti-p14ARF (Cat. No. A300-340A Lot2) used at a dilution of 1:1,000 (1  $\mu$ g/ml). *Detection:* DAB