



SZABO SCANDIC

Part of Europa Biosite

Produktinformation



Forschungsprodukte & Biochemikalien



Zellkultur & Verbrauchsmaterial



Diagnostik & molekulare Diagnostik



Laborgeräte & Service

Weitere Information auf den folgenden Seiten!
See the following pages for more information!



Lieferung & Zahlungsart

siehe unsere [Liefer- und Versandbedingungen](#)

Zuschläge

- Mindermengenzuschlag
- Trockeneiszuschlag
- Gefahrgutzuschlag
- Expressversand

SZABO-SCANDIC HandelsgmbH

Quellenstraße 110, A-1100 Wien

T. +43(0)1 489 3961-0

F. +43(0)1 489 3961-7

mail@szabo-scandic.com

www.szabo-scandic.com

[linkedin.com/company/szaboscandic](https://www.linkedin.com/company/szaboscandic) 

p14ARF Antibody

Rabbit Polyclonal

Antigen Affinity Purified

Protein ID Q8N726

Catalog No. A300-342A-T

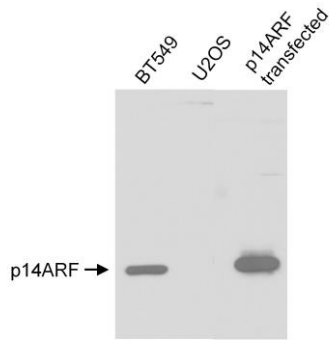
GeneID 1029

Lot No. A300-342A-T-2

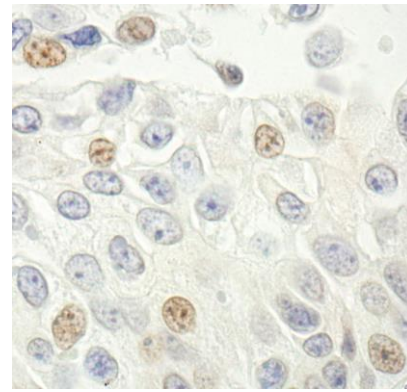


APPLICATIONS	WB, IHC
SPECIES REACTIVITY	Human
AMOUNT	10 µl
CONCENTRATION	1000 µg/ml
STORAGE/SHELF LIFE	2 – 8° C / 1 year from date of receipt
PHYSICAL STATE	Liquid
BUFFER	Tris-citrate/phosphate buffer, pH 7 to 8 containing 0.09% Sodium Azide
ISOTYPE	IgG
ORIGIN	USA
PRODUCTION PROCEDURES	Antibody was affinity purified using an epitope specific to p14ARF immobilized on solid support. The epitope recognized by A300-342A-T maps to a region between residue 82 and the C-terminus (residue 132) of human p14ARF using the numbering given in entry NP_478102.2 (GeneID 1029). Immunoglobulin concentration was determined by extinction coefficient: absorbance at 280 nm of 1.4 equals 1.0 mg of IgG.
APPLICATIONS	Centrifuge tube to remove product from lid. Optimal working dilutions should be determined experimentally by the investigator. Prepare working dilution immediately before use. Western Blot 1:500 – 1:2,500 Immunohistochemistry 1:500 – 1:2,000. Epitope retrieval with citrate buffer pH 6.0 is recommended for FFPE tissue sections.
APPLICATION NOTES	Western blot of lysates performed using standard western blot reagents and 4-12% SDS-PAGE.
ADDITIONAL INFO	https://www.bethyl.com/product/A300-342A-T Use the link above to view SDS, a current list of citations, and other product specific information.

This document certifies that this product has met all of the quality control standards defined by Bethyl Laboratories, Inc.
Eric McIntush, PhD | Chief Scientific Officer Date: January 10, 2020



Detection of human p14ARF by western blot. *Samples:* Whole cell lysate (25 μ g) from BT549 (positive control), U2OS (negative control) and p14ARF transfected IMR90 cells. *Antibody:* Affinity purified rabbit anti-p14ARF (Cat. No. A300-342A-T) used for WB at 1 μ g/ml. *Detection:* Chemiluminescence.



Detection of human p14ARF by immunohistochemistry. *Samples:* FFPE section of human prostate carcinoma. *Antibody:* Affinity purified rabbit anti-p14ARF (Cat. No. A300-342A-T Lot2) used at a dilution of 1:1,000 (1 μ g/ml). *Detection:* DAB