



SZABO SCANDIC

Part of Europa Biosite

Produktinformation



Forschungsprodukte & Biochemikalien



Zellkultur & Verbrauchsmaterial



Diagnostik & molekulare Diagnostik



Laborgeräte & Service

Weitere Information auf den folgenden Seiten!
See the following pages for more information!



Lieferung & Zahlungsart

siehe unsere [Liefer- und Versandbedingungen](#)

Zuschläge

- Mindermengenzuschlag
- Trockeneiszuschlag
- Gefahrgutzuschlag
- Expressversand

SZABO-SCANDIC HandelsgmbH

Quellenstraße 110, A-1100 Wien

T. +43(0)1 489 3961-0

F. +43(0)1 489 3961-7

mail@szabo-scandic.com

www.szabo-scandic.com

[linkedin.com/company/szaboscandic](https://www.linkedin.com/company/szaboscandic) 

p14ARF Antibody

Rabbit Polyclonal

Antigen Affinity Purified

Protein ID Q8N726

Catalog No. A300-342A

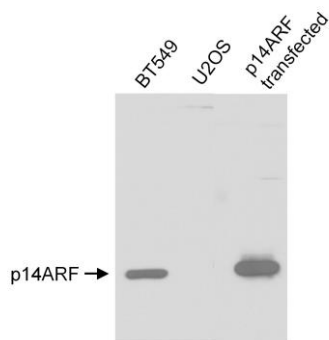
GeneID 1029

Lot No. A300-342A-2

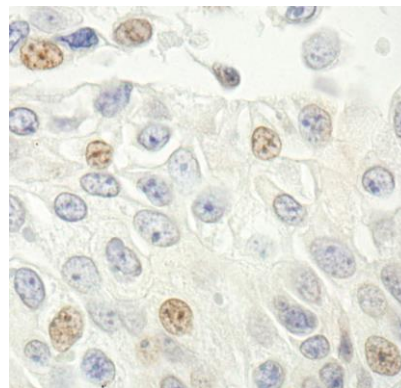


| | |
|------------------------------|---|
| APPLICATIONS | WB, IHC |
| SPECIES REACTIVITY | Human |
| AMOUNT | 100 µl |
| CONCENTRATION | 1000 µg/ml |
| STORAGE/SHELF LIFE | 2 – 8° C / 1 year from date of receipt |
| PHYSICAL STATE | Liquid |
| BUFFER | Tris-citrate/phosphate buffer, pH 7 to 8 containing 0.09% Sodium Azide |
| ISOTYPE | IgG |
| ORIGIN | USA |
| PRODUCTION PROCEDURES | <p>Antibody was affinity purified using an epitope specific to p14ARF immobilized on solid support.</p> <p>The epitope recognized by A300-342A maps to a region between residue 82 and the C-terminus (residue 132) of human p14ARF using the numbering given in entry NP_478102.2 (GeneID 1029).</p> <p>Immunoglobulin concentration was determined by extinction coefficient: absorbance at 280 nm of 1.4 equals 1.0 mg of IgG.</p> |
| APPLICATIONS | <p>Centrifuge tube to remove product from lid. Optimal working dilutions should be determined experimentally by the investigator. Prepare working dilution immediately before use.</p> <p>Western Blot 1:500 – 1:2,500</p> <p>Immunohistochemistry 1:500 – 1:2,000. Epitope retrieval with citrate buffer pH 6.0 is recommended for FFPE tissue sections.</p> |
| APPLICATION NOTES | Western blot of lysates performed using standard western blot reagents and 4-12% SDS-PAGE. |
| IHC HUMAN CONTROLS | Breast Carcinoma, Prostate Carcinoma |
| ADDITIONAL INFO | <p>https://www.bethyl.com/product/A300-342A</p> <p>Use the link above to view SDS, a current list of citations, and other product specific information.</p> |

This document certifies that this product has met all of the quality control standards defined by Bethyl Laboratories, Inc.
Eric McIntush, PhD | Chief Scientific Officer Date: January 10, 2020



Detection of human p14ARF by western blot. *Samples:* Whole cell lysate (25 μ g) from BT549 (positive control), U2OS (negative control) and p14ARF transfected IMR90 cells. *Antibody:* Affinity purified rabbit anti-p14ARF (Cat. No. A300-342A) used for WB at 1 μ g/ml. *Detection:* Chemiluminescence.



Detection of human p14ARF by immunohistochemistry. *Sample:* FFPE section of human prostate carcinoma. *Antibody:* Affinity purified rabbit anti-p14ARF (Cat. No. A300-342A Lot2) used at a dilution of 1:1,000 (1 μ g/ml). *Detection:* DAB