



SZABO SCANDIC

Part of Europa Biosite

Produktinformation



Forschungsprodukte & Biochemikalien



Zellkultur & Verbrauchsmaterial



Diagnostik & molekulare Diagnostik



Laborgeräte & Service

Weitere Information auf den folgenden Seiten!
See the following pages for more information!



Lieferung & Zahlungsart

siehe unsere [Liefer- und Versandbedingungen](#)

Zuschläge

- Mindermengenzuschlag
- Trockeneiszuschlag
- Gefahrgutzuschlag
- Expressversand

SZABO-SCANDIC HandelsgmbH

Quellenstraße 110, A-1100 Wien

T. +43(0)1 489 3961-0

F. +43(0)1 489 3961-7

mail@szabo-scandic.com

www.szabo-scandic.com

[linkedin.com/company/szaboscandic](https://www.linkedin.com/company/szaboscandic) 

SRC1 Antibody

Rabbit Polyclonal

Antigen Affinity Purified	RefSeq ID	NP_003734.3
Catalog No. A300-344A-T	Uniprot ID	Q15788
Lot No. 2	GeneID	8648

APPLICATIONS	WB, IP
SPECIES REACTIVITY	Human
PRESUMED REACTIVITY	Based on 100% sequence identity, this antibody is predicted to react with Mouse
AMOUNT	10 µl
CONCENTRATION	1000 µg/ml
STORAGE/SHELF LIFE	2 – 8°C / 1 year from date of receipt
PHYSICAL STATE	Liquid

BUFFER	Tris-citrate/phosphate buffer, pH 7 to 8 containing 0.09% Sodium Azide
---------------	--

ISOTYPE	IgG
----------------	-----

ORIGIN	USA
---------------	-----

PRODUCTION PROCEDURES	Antibody was affinity purified using an epitope specific to SRC1 immobilized on solid support.
------------------------------	--

The epitope recognized by A300-344A maps to a region between residue 1400 and the C-terminus (residue 1441) of human Nuclear Receptor Coactivator 1 using the numbering given in entry NP_003734.3 (GeneID 8648).

Immunoglobulin concentration was determined using Beer's Law where 1 mg/mL IgG has an A280 of 1.4.

APPLICATIONS	Centrifuge tube to remove product from lid. Optimal working dilutions should be determined experimentally by the investigator. Prepare working dilution immediately before use.
---------------------	---

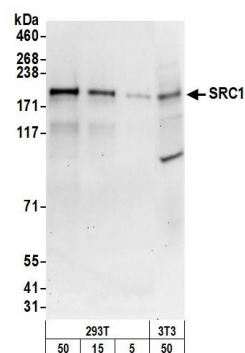
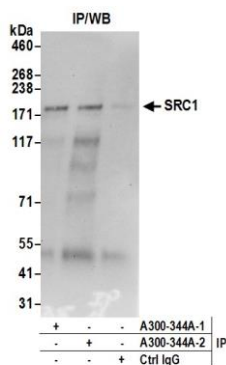
Western Blot	1:1000 – 1:5000
--------------	-----------------

Immunoprecipitation	6 µg/mg lysate
---------------------	----------------

ADDITIONAL INFO	https://www.fortislife.com/p/A300-344A-T
------------------------	---

Use the link above to view SDS, a current list of citations, and other product specific information.

This document certifies that this product has met all of the quality control standards defined by Bethyl Laboratories, Inc.
Michael Spencer, PhD Date: January 31, 2024



Detection of human SRC1 by western blot of immunoprecipitates. *Samples:* Whole cell lysate (0.5 or 1.0 mg per IP reaction; 20% of IP loaded) from HEK293T cells prepared using NETN lysis buffer. *Antibodies:* Affinity purified rabbit anti-SRC1 antibody A300-344A (lot A300-344A-2) used for IP at 6 µg per reaction. SRC1 was also immunoprecipitated by a previous lot of this antibody (lot A300-344A-1). For blotting immunoprecipitated SRC1, A300-344A was used at 0.4 µg/ml. *Detection:* Chemiluminescence with an exposure time of 30 seconds.

Detection of human and mouse SRC1 by western blot. *Samples:* Whole cell lysate from HEK293T and mouse NIH 3T3 cells prepared using NETN lysis buffer. *Antibody:* Affinity purified rabbit anti-SRC1 antibody A300-344A (lot A300-344A-2) used for WB at 0.1 µg/ml. *Detection:* Chemiluminescence with an exposure time of 30 seconds.