



# SZABO SCANDIC

Part of Europa Biosite

## Produktinformation



Forschungsprodukte & Biochemikalien



Zellkultur & Verbrauchsmaterial



Diagnostik & molekulare Diagnostik



Laborgeräte & Service

Weitere Information auf den folgenden Seiten!  
See the following pages for more information!



### Lieferung & Zahlungsart

siehe unsere [Liefer- und Versandbedingungen](#)

### Zuschläge

- Mindermengenzuschlag
- Trockeneiszuschlag
- Gefahrgutzuschlag
- Expressversand

### SZABO-SCANDIC HandelsgmbH

Quellenstraße 110, A-1100 Wien

T. +43(0)1 489 3961-0

F. +43(0)1 489 3961-7

[mail@szabo-scandic.com](mailto:mail@szabo-scandic.com)

[www.szabo-scandic.com](http://www.szabo-scandic.com)

[linkedin.com/company/szaboscandic](https://www.linkedin.com/company/szaboscandic) 

# E6AP Antibody

Rabbit Polyclonal

Antigen Affinity Purified

Protein ID NP\_000453.2

Catalog No. A300-351A

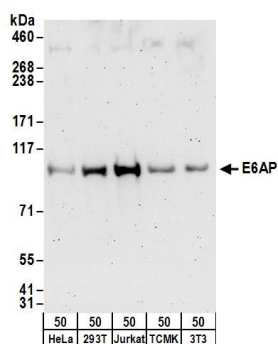
GeneID 7337

Lot No. A300-351A-2



|                              |  |
|------------------------------|--|
| <b>APPLICATIONS</b>          | WB, IP   |
| <b>SPECIES REACTIVITY</b>    | Human, Mouse   |
| <b>AMOUNT</b>                | 100 µl   |
| <b>CONCENTRATION</b>         | 1000 µg/ml   |
| <b>STORAGE/SHELF LIFE</b>    | 2 - 8° C / 1 year from date of receipt   |
| <b>PHYSICAL STATE</b>        | Liquid   |
| <b>BUFFER</b>                | Tris-citrate/phosphate buffer, pH 7 to 8 containing 0.09% Sodium Azide   |
| <b>ISOTYPE</b>               | IgG  |
| <b>ORIGIN</b>                | USA  |
| <b>PRODUCTION PROCEDURES</b> | <p>Antibody was affinity purified using an epitope specific to E6AP immobilized on solid support.</p> <p>The epitope recognized by A300-351A maps to a region between residue 75 and 125 of human Ubiquitin Protein Ligase E3A using the numbering given in entry NP_000453.2 (GeneID 7337).</p> <p>Immunoglobulin concentration was determined by extinction coefficient: absorbance at 280 nm of 1.4 equals 1.0 mg of IgG.</p> |
| <b>APPLICATIONS</b>          | <p>Centrifuge tube to remove product from lid. Optimal working dilutions should be determined experimentally by the investigator. Prepare working dilution immediately before use.</p> <p>Western Blot                      1:1,000 - 1:5,000</p> <p>Immunoprecipitation            1 - 4 µg/mg lysate</p>   |
| <b>APPLICATION NOTES</b>     | <p>Western blot of immunoprecipitates performed using Normal Pig Serum (Cat. No. S100-020), Goat anti-Rabbit Light Chain HRP Conjugate (Cat. No. A120-113P) and 4-8% SDS-PAGE (link to IP-western blot protocol in Additional Info section below).</p> <p>Western blot of lysates performed using standard western blot reagents and 4-8% SDS-PAGE.</p>  |
| <b>ADDITIONAL INFO</b>       | <p><a href="https://www.bethyl.com/product/A300-351A">https://www.bethyl.com/product/A300-351A</a></p> <p>Use the link above to view SDS, a current list of citations, and other product specific information. IP-western blot protocol: <a href="https://www.bethyl.com/content/protocol_IP_WB">https://www.bethyl.com/content/protocol_IP_WB</a></p>   |

This document certifies that this product has met all of the quality control standards defined by Bethyl Laboratories, Inc.  
Eric McIntush, PhD | Chief Scientific Officer Date: June 21, 2019

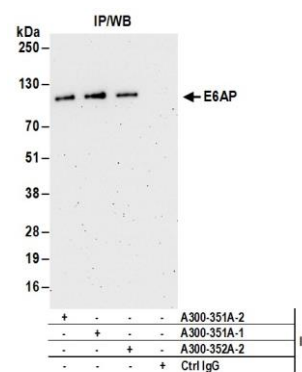


#### Detection of human and mouse E6AP by western blot.

*Samples:* Whole cell lysate (50 µg) from HeLa, HEK293T, Jurkat, mouse TCMK-1, and mouse NIH 3T3 cells.

*Antibodies:* Affinity purified rabbit anti-E6AP antibody A300-351A (lot A300-351A-2) used for WB at 0.4 µg/ml.

*Detection:* Chemiluminescence with an exposure time of 3 minutes.



#### Detection of human E6AP by western blot of immunoprecipitates.

*Samples:* Whole cell lysate (1 mg for IP; 20% of IP loaded) from HeLa cells. *Antibodies:* Affinity purified rabbit anti-E6AP antibody A300-351A (lot A300-351A-2) used for IP at 6 µg/mg lysate. E6AP was also immunoprecipitated by a previous lot of this antibody (lot A300-351A-1), and rabbit anti-E6AP antibody A300-352A. For blotting immunoprecipitated E6AP, A300-351A was used at 1 µg/ml. *Detection:* Chemiluminescence with an exposure time of 3 minutes.