



SZABO SCANDIC

Part of Europa Biosite

Produktinformation



Forschungsprodukte & Biochemikalien



Zellkultur & Verbrauchsmaterial



Diagnostik & molekulare Diagnostik



Laborgeräte & Service

Weitere Information auf den folgenden Seiten!
See the following pages for more information!



Lieferung & Zahlungsart

siehe unsere [Liefer- und Versandbedingungen](#)

Zuschläge

- Mindermengenzuschlag
- Trockeneiszuschlag
- Gefahrgutzuschlag
- Expressversand

SZABO-SCANDIC HandelsgmbH

Quellenstraße 110, A-1100 Wien

T. +43(0)1 489 3961-0

F. +43(0)1 489 3961-7

mail@szabo-scandic.com

www.szabo-scandic.com

[linkedin.com/company/szaboscandic](https://www.linkedin.com/company/szaboscandic) 

p300 Antibody

Rabbit Polyclonal

Antigen Affinity Purified

Protein ID NP_001420.2

Catalog No. A300-359A

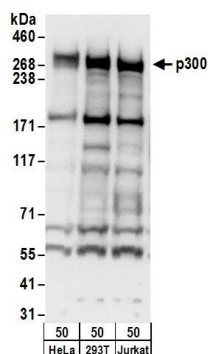
GeneID 2033

Lot No. A300-359A-2

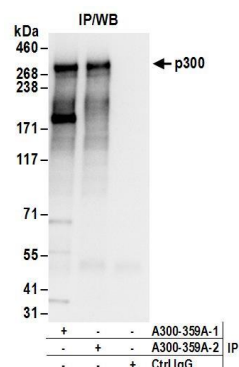


APPLICATIONS	WB, IP, IHC
SPECIES REACTIVITY	Human
AMOUNT	100 µl
CONCENTRATION	1000 µg/ml
STORAGE/SHELF LIFE	2 - 8° C / 1 year from date of receipt
PHYSICAL STATE	Liquid
BUFFER	Tris-citrate/phosphate buffer, pH 7 to 8 containing 0.09% Sodium Azide
ISOTYPE	IgG
ORIGIN	USA
PRODUCTION PROCEDURES	<p>Antibody was affinity purified using an epitope specific to p300 immobilized on solid support.</p> <p>The epitope recognized by A300-359A maps to a region between residues 1000 and 1050 of human E1A-associated protein p300 using the numbering given in entry NP_001420.2 (GeneID 2033).</p> <p>Immunoglobulin concentration was determined by extinction coefficient: absorbance at 280 nm of 1.4 equals 1.0 mg of IgG.</p>
APPLICATIONS	<p>Centrifuge tube to remove product from lid. Optimal working dilutions should be determined experimentally by the investigator. Prepare working dilution immediately before use.</p> <p>Western Blot 1:1,000 - 1:10,000</p> <p>Immunoprecipitation 2 - 10 µg/mg lysate</p> <p>Immunohistochemistry 1:500 - 1:2,000. Epitope retrieval with citrate buffer pH 6.0 is recommended for FFPE tissue sections.</p>
APPLICATION NOTES	<p>Western blot of immunoprecipitates performed using Normal Pig Serum (Cat. No. S100-020), Goat anti-Rabbit Light Chain HRP Conjugate (Cat. No. A120-113P) and 4-8% SDS-PAGE (link to IP-western blot protocol in Additional Info section below).</p> <p>Western blot of lysates performed using standard western blot reagents and 4-8% SDS-PAGE.</p>
IHC HUMAN CONTROLS	Breast Carcinoma, Colon Carcinoma
ADDITIONAL INFO	<p>https://www.bethyl.com/product/A300-359A</p> <p>Use the link above to view SDS, a current list of citations, and other product specific information. IP-western blot protocol: https://www.bethyl.com/content/protocol_IP_WB</p>

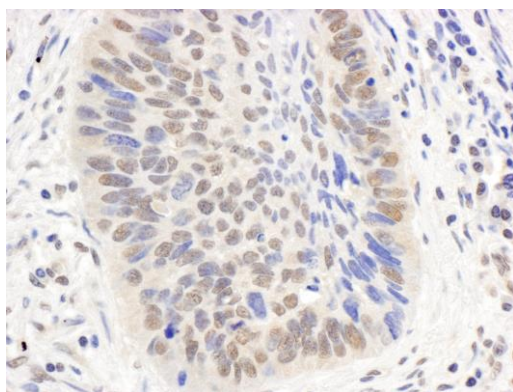
This document certifies that this product has met all of the quality control standards defined by Bethyl Laboratories, Inc.
Eric McIntush, PhD | Chief Scientific Officer Date: June 21, 2019



Detection of human p300 by western blot. *Samples:* Whole cell lysate (50 µg) from HeLa, HEK293T, and Jurkat cells. *Antibodies:* Affinity purified rabbit anti-p300 antibody A300-359A (lot A300-359A-2) used for WB at 0.1 µg/ml. *Detection:* Chemiluminescence with an exposure time of 10 seconds.



Detection of human p300 by western blot of immunoprecipitates. *Samples:* Whole cell lysate (1 mg for IP; 20% of IP loaded) from HeLa cells. *Antibodies:* Affinity purified rabbit anti-p300 antibody A300-359A (lot A300-359A-2) used for IP at 6 µg/mg lysate. p300 was also immunoprecipitated by a previous lot (lot A300-359A-1) of this antibody. For blotting immunoprecipitated p300, A300-359A-2 was used at 1 µg/ml. *Detection:* Chemiluminescence with an exposure time of 3 seconds.



Detection of human p300 by immunohistochemistry. *Sample:* FFPE section of human lung carcinoma. *Antibody:* Affinity purified rabbit anti-p300 (Cat. No. A300-359A Lot2) used at a dilution of 1:5,000 (0.2 µg/ml). *Detection:* DAB