



SZABO SCANDIC

Part of Europa Biosite

Produktinformation



Forschungsprodukte & Biochemikalien



Zellkultur & Verbrauchsmaterial



Diagnostik & molekulare Diagnostik



Laborgeräte & Service

Weitere Information auf den folgenden Seiten!
See the following pages for more information!



Lieferung & Zahlungsart

siehe unsere [Liefer- und Versandbedingungen](#)

Zuschläge

- Mindermengenzuschlag
- Trockeneiszuschlag
- Gefahrgutzuschlag
- Expressversand

SZABO-SCANDIC HandelsgmbH

Quellenstraße 110, A-1100 Wien

T. +43(0)1 489 3961-0

F. +43(0)1 489 3961-7

mail@szabo-scandic.com

www.szabo-scandic.com

[linkedin.com/company/szaboscandic](https://www.linkedin.com/company/szaboscandic) 

INT1 Antibody

Rabbit Polyclonal

Antigen Affinity Purified

Protein ID XP_291222.2

Catalog No. A300-361A

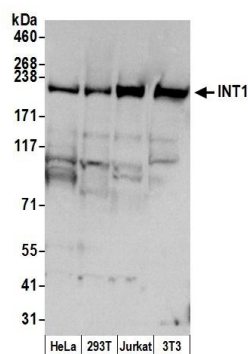
GeneID 26173

Lot No. A300-361A-2



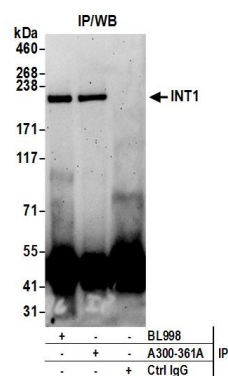
APPLICATIONS	WB, IP
SPECIES REACTIVITY	Human, Mouse
AMOUNT	100 µl
CONCENTRATION	1000 µg/ml
STORAGE/SHELF LIFE	2 – 8° C / 1 year from date of receipt
PHYSICAL STATE	Liquid
BUFFER	Tris-citrate/phosphate buffer, pH 7 to 8 containing 0.09% Sodium Azide
ISOTYPE	IgG
ORIGIN	USA
PRODUCTION PROCEDURES	<p>Antibody was affinity purified using an epitope specific to INT1 immobilized on solid support.</p> <p>The epitope recognized by A300-361A maps to a region between residues 150 and 200 of human integrator complex subunit 1 using the numbering given in entry NP_001073922.1 (GeneID 26173).</p> <p>Immunoglobulin concentration was determined by extinction coefficient: absorbance at 280 nm of 1.4 equals 1.0 mg of IgG.</p>
APPLICATIONS	<p>Centrifuge tube to remove product from lid. Optimal working dilutions should be determined experimentally by the investigator. Prepare working dilution immediately before use.</p> <p>Western Blot 1:1,000 – 1:2,500</p> <p>Immunoprecipitation 2 – 5 µg/mg lysate</p>
APPLICATION NOTES	<p>Western blot of immunoprecipitates performed using Normal Pig Serum (Cat. No. S100-020), Goat anti-Rabbit Light Chain HRP Conjugate (Cat. No. A120-113P) and 4-8% SDS-PAGE (link to IP-western blot protocol in Additional Info section below).</p> <p>Western blot of lysates performed using standard western blot reagents and 4-8% SDS-PAGE.</p>
ADDITIONAL INFO	<p>https://www.bethyl.com/product/A300-361A</p> <p>Use the link above to view SDS, a current list of citations, and other product specific information. IP-western blot protocol: https://www.bethyl.com/content/protocol_IP_WB</p>

This document certifies that this product has met all of the quality control standards defined by Bethyl Laboratories, Inc.
Eric McIntush, PhD | Chief Scientific Officer Date: June 21, 2019



Detection of human and mouse INT1 by western blot.

Samples: Whole cell lysate (50 µg) from HeLa, HEK293T, Jurkat, and mouse NIH 3T3 cells prepared using NETN lysis buffer. **Antibody:** Affinity purified rabbit anti-INT1 antibody A300-361A (lot A300-361A-2) used for WB at 0.4 µg/ml. **Detection:** Chemiluminescence with an exposure time of 30 seconds.



Detection of human INT1 by western blot of immunoprecipitates.

Samples: Whole cell lysate (1.0 mg per IP reaction; 20% of IP loaded) from HeLa cells prepared using NETN lysis buffer. **Antibodies:** Affinity purified rabbit anti-INT1 antibody A300-361A (lot A300-361A-2) used for IP at 3 µg per reaction. INT1 was also immunoprecipitated by rabbit anti-INT1 antibody BL998. For blotting immunoprecipitated INT1, A300-361A was used at 1 µg/ml. **Detection:** Chemiluminescence with an exposure time of 3 minutes.