



# SZABO SCANDIC

Part of Europa Biosite

## Produktinformation



Forschungsprodukte & Biochemikalien



Zellkultur & Verbrauchsmaterial



Diagnostik & molekulare Diagnostik



Laborgeräte & Service

Weitere Information auf den folgenden Seiten!  
See the following pages for more information!



### Lieferung & Zahlungsart

siehe unsere [Liefer- und Versandbedingungen](#)

### Zuschläge

- Mindermengenzuschlag
- Trockeneiszuschlag
- Gefahrgutzuschlag
- Expressversand

### SZABO-SCANDIC HandelsgmbH

Quellenstraße 110, A-1100 Wien

T. +43(0)1 489 3961-0

F. +43(0)1 489 3961-7

[mail@szabo-scandic.com](mailto:mail@szabo-scandic.com)

[www.szabo-scandic.com](http://www.szabo-scandic.com)

[linkedin.com/company/szaboscandic](https://www.linkedin.com/company/szaboscandic) 

# CBP Antibody

Rabbit Polyclonal

Antigen Affinity Purified	RefSeq ID	NP_004371.1
Catalog No. A300-362A	Uniprot ID	Q92793
Lot No. A300-362A-2	GeneID	1387

---

<b>APPLICATIONS</b>	WB, IP
<b>SPECIES REACTIVITY</b>	Human
<b>AMOUNT</b>	100 µl
<b>CONCENTRATION</b>	1000 µg/ml
<b>STORAGE/SHELF LIFE</b>	2 - 8°C / 1 year from date of receipt
<b>PHYSICAL STATE</b>	Liquid
<b>BUFFER</b>	Tris-citrate/phosphate buffer, pH 7 to 8 containing 0.09% Sodium Azide
<b>ISOTYPE</b>	IgG
<b>ORIGIN</b>	USA
<b>PRODUCTION PROCEDURES</b>	Antibody was affinity purified using an epitope specific to CBP immobilized on solid support.

The epitope recognized by A300-362A maps to a region between residues 975 and 1025 of human CREB Binding Protein using the numbering given in entry NP\_004371.1 (GeneID 1387).

Immunoglobulin concentration was determined by extinction coefficient: absorbance at 280 nm of 1.4 equals 1.0 mg of IgG.

**APPLICATIONS** Centrifuge tube to remove product from lid. Optimal working dilutions should be determined experimentally by the investigator. Prepare working dilution immediately before use.

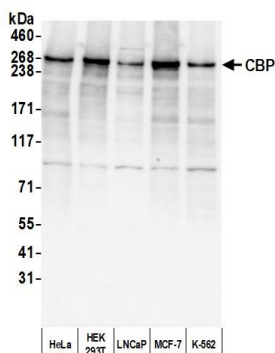
Western Blot 1:1,000 - 1:25,000

Immunoprecipitation 2 - 10 µg/mg lysate

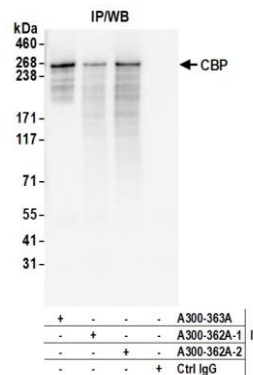
**ADDITIONAL INFO** <https://www.fortislife.com/p/A300-362A>

Use the link above to view SDS, a current list of citations, and other product specific information.

This document certifies that this product has met all of the quality control standards defined by Bethyl Laboratories, Inc.  
Michael Spencer, PhD Date: September 15, 2022



**Detection of human CBP by western blot.** *Samples:* Whole cell lysate (10 µg) from HeLa, HEK293T, LNCaP, MCF-7, and K-562 cells prepared using NETN lysis buffer. *Antibody:* Affinity purified rabbit anti-CBP antibody A300-362A (lot A300-362A-2) used for WB at 0.04 µg/ml. *Detection:* Chemiluminescence with an exposure time of 10 seconds.



**Detection of human CBP by western blot of immunoprecipitates.** *Samples:* Whole cell lysate (1.0 mg per IP reaction; 20% of IP loaded) from HeLa cells prepared using NETN lysis buffer. *Antibodies:* Affinity purified rabbit anti-CBP antibody (A300-362A lot 2) used for IP at 6 µg per reaction. CBP was also immunoprecipitated by a previous lot of this antibody (A300-362A lot 1) and a second antibody against a different epitope of CBP (A300-363A). For blotting immunoprecipitated CBP, A300-362A was used at 0.04 µg/ml. *Detection:* Chemiluminescence with an exposure time of 1 second.