



# SZABO SCANDIC

Part of Europa Biosite

## Produktinformation



Forschungsprodukte & Biochemikalien



Zellkultur & Verbrauchsmaterial



Diagnostik & molekulare Diagnostik



Laborgeräte & Service

Weitere Information auf den folgenden Seiten!  
See the following pages for more information!



### Lieferung & Zahlungsart

siehe unsere [Liefer- und Versandbedingungen](#)

### Zuschläge

- Mindermengenzuschlag
- Trockeneiszuschlag
- Gefahrgutzuschlag
- Expressversand

### SZABO-SCANDIC HandelsgmbH

Quellenstraße 110, A-1100 Wien

T. +43(0)1 489 3961-0

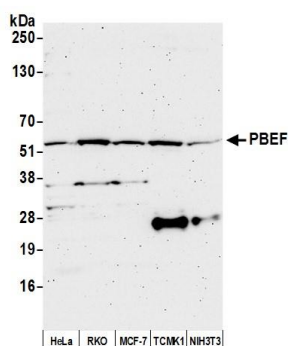
F. +43(0)1 489 3961-7

[mail@szabo-scandic.com](mailto:mail@szabo-scandic.com)

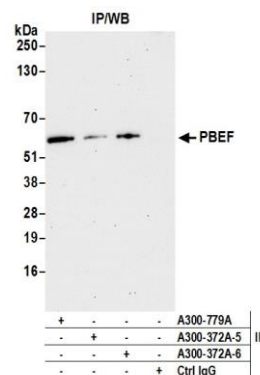
[www.szabo-scandic.com](http://www.szabo-scandic.com)

[linkedin.com/company/szaboscandic](https://www.linkedin.com/company/szaboscandic) 

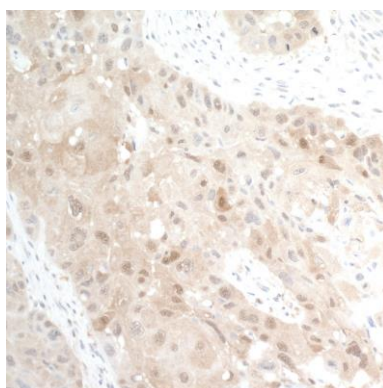




**Detection of human and mouse PBEF by western blot.**  
*Samples:* Whole cell lysate (50 µg) from HeLa, RKO, MCF-7, TCMK-1, and NIH 3T3 cells prepared using NETN lysis buffer. *Antibody:* Affinity purified rabbit anti-PBEF antibody A300-372A (lot A300-372A-6) used for WB at 0.04 µg/ml. *Detection:* Chemiluminescence with an exposure time of 3 minutes.



**Detection of human PBEF by western blot of immunoprecipitates.** *Samples:* Whole cell lysate (1.0 mg per IP reaction; 20% of IP loaded) from HeLa cells prepared using NETN lysis buffer. *Antibodies:* Affinity purified rabbit anti-PBEF antibody A300-372A (lot A300-372A-6) used for IP at 6 µg per reaction. PBEF was also immunoprecipitated by a previous lot of this antibody (lot A300-372A-5) and rabbit anti-Visfatin antibody A300-779A. For blotting immunoprecipitated PBEF, A300-372A was used at 0.04 µg/ml. *Detection:* Chemiluminescence with an exposure time of 30 seconds.



**Detection of human PBEF by immunohistochemistry.**  
*Sample:* FFPE section of human head and neck squamous cell carcinoma. *Antibody:* Affinity purified rabbit anti-PBEF (Cat. No. A300-372A lot 6) used at a dilution of 1:5,000 (0.2µg/ml). *Detection:* DAB