



# SZABO SCANDIC

Part of Europa Biosite

## Produktinformation



Forschungsprodukte & Biochemikalien



Zellkultur & Verbrauchsmaterial



Diagnostik & molekulare Diagnostik



Laborgeräte & Service

Weitere Information auf den folgenden Seiten!  
See the following pages for more information!



### Lieferung & Zahlungsart

siehe unsere [Liefer- und Versandbedingungen](#)

### Zuschläge

- Mindermengenzuschlag
- Trockeneiszuschlag
- Gefahrgutzuschlag
- Expressversand

### SZABO-SCANDIC HandelsgmbH

Quellenstraße 110, A-1100 Wien

T. +43(0)1 489 3961-0

F. +43(0)1 489 3961-7

[mail@szabo-scandic.com](mailto:mail@szabo-scandic.com)

[www.szabo-scandic.com](http://www.szabo-scandic.com)

[linkedin.com/company/szaboscandic](https://www.linkedin.com/company/szaboscandic) 

# MLL1 Antibody

Rabbit Polyclonal

Antigen Affinity Purified Protein ID Q03164

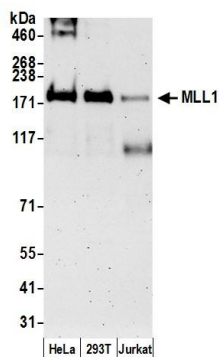
Catalog No. A300-374A-T GeneID 4297

Lot No. A300-374A-T-5



<b>APPLICATIONS</b>	WB, IP, ChIP, ChIP-chip
<b>SPECIES REACTIVITY</b>	Human
<b>PRESUMED REACTIVITY</b>	Based on 100% sequence identity, this antibody is predicted to react with Mouse
<b>AMOUNT</b>	20 µl (2 blots)
<b>CONCENTRATION</b>	100 µg/ml
<b>STORAGE/SHELF LIFE</b>	2 - 8° C / 1 year from date of receipt
<b>PHYSICAL STATE</b>	Liquid
<b>BUFFER</b>	Tris-buffered Saline containing 0.1% BSA and 0.09% Sodium Azide
<b>ISOTYPE</b>	IgG
<b>ORIGIN</b>	USA
<b>PRODUCTION PROCEDURES</b>	<p>Antibody was affinity purified using an epitope specific to MLL1 immobilized on solid support.</p> <p>The epitope recognized by A300-374A-T maps to a region between residues 2725 and 2775 of human myeloid/lymphoid or mixed-lineage leukemia 1 using the number given in Swiss-Prot entry Q03164 (GeneID 4297). The epitope is found in the C-terminal 180 kDa fragment generated by proteolytic cleavage. The epitope is found in isoform 14P-18B of MLL1.</p>
<b>APPLICATIONS</b>	<p>Centrifuge tube to remove product from lid. Optimal working dilutions should be determined experimentally by the investigator. Prepare working dilution immediately before use.</p> <p>Western Blot 1:1000</p> <p>Immunoprecipitation The antibody contained within A300-374A-T has been qualified for use in immunoprecipitation; however, we recommend using the alternative formulation of this antibody found as product A300-374A.</p> <p>ChIP The antibody contained within A300-374A-T has been qualified for use in chromatin immunoprecipitation; however, we recommend using the alternative formulation of this antibody found as product A300-374A.</p> <p>ChIP-chip The antibody contained within A300-374A-T has been qualified for use in ChIP-chip however, we recommend using the alternative formulation of this antibody found as product A300-374A.</p>
<b>APPLICATION NOTES</b>	<p>Western blot of immunoprecipitates performed using Normal Pig Serum (Cat. No. S100-020), Goat anti-Rabbit Light Chain HRP Conjugate (Cat. No. A120-113P) and 3-8% SDS-PAGE (link to IP-western blot protocol in Additional Info section below).</p> <p>Western blot of lysates performed using standard western blot reagents and 3-8% SDS-PAGE.</p>
<b>ADDITIONAL INFO</b>	<p><a href="https://www.bethyl.com/product/A300-374A-T">https://www.bethyl.com/product/A300-374A-T</a></p> <p>Use the link above to view SDS, a current list of citations, and other product specific information.</p> <p>IP-western blot protocol: <a href="https://www.bethyl.com/content/protocol_IP_WB">https://www.bethyl.com/content/protocol_IP_WB</a></p>

This document certifies that this product has met all of the quality control standards defined by Bethyl Laboratories, Inc.  
Eric McIntush, PhD | Chief Scientific Officer Date: June 21, 2019



**Detection of human MLL1 by western blot.** *Samples:* Whole cell lysate (50  $\mu$ g) from HeLa, HEK293T, and Jurkat cells prepared using NETN lysis buffer. *Antibody:* Affinity purified rabbit anti-MLL1 antibody A300-374A-T (lot A300-374A-T-5) used for WB at 1:1000. *Detection:* Chemiluminescence with an exposure time of 3 minutes.