



SZABO SCANDIC

Part of Europa Biosite

Produktinformation



Forschungsprodukte & Biochemikalien



Zellkultur & Verbrauchsmaterial



Diagnostik & molekulare Diagnostik



Laborgeräte & Service

Weitere Information auf den folgenden Seiten!
See the following pages for more information!



Lieferung & Zahlungsart

siehe unsere [Liefer- und Versandbedingungen](#)

Zuschläge

- Mindermengenzuschlag
- Trockeneiszuschlag
- Gefahrgutzuschlag
- Expressversand

SZABO-SCANDIC HandelsgmbH

Quellenstraße 110, A-1100 Wien

T. +43(0)1 489 3961-0

F. +43(0)1 489 3961-7

mail@szabo-scandic.com

www.szabo-scandic.com

[linkedin.com/company/szaboscandic](https://www.linkedin.com/company/szaboscandic) 

Bcl11a Antibody

Rabbit Polyclonal

Antigen Affinity Purified	RefSeq ID	NP_612569.1
Catalog No. A300-382A-T	Uniprot ID	Q9H165
Lot No. 3	GeneID	53335

APPLICATIONS	WB, IP
SPECIES REACTIVITY	Human, Mouse
AMOUNT	10 µl
CONCENTRATION	1000 µg/ml
STORAGE/SHELF LIFE	2 – 8°C / 1 year from date of receipt
PHYSICAL STATE	Liquid
BUFFER	Tris-citrate/phosphate buffer, pH 7 to 8 containing 0.09% Sodium Azide
ISOTYPE	IgG
ORIGIN	USA
PRODUCTION PROCEDURES	Antibody was affinity purified using an epitope specific to Bcl11a immobilized on solid support.

The epitope recognized by A300-382A maps to a region between residue 775 and the C-terminus (residue 835) of human B-cell CLL/Lymphoma 11A using the numbering given in Swiss-Prot entry Q9H165 (GeneID 53335).

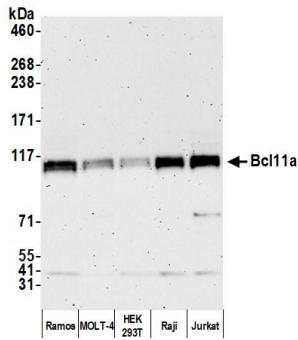
Immunoglobulin concentration was determined using Beer's Law where 1 mg/mL IgG has an A280 of 1.4.

APPLICATIONS Centrifuge tube to remove product from lid. Optimal working dilutions should be determined experimentally by the investigator. Prepare working dilution immediately before use.

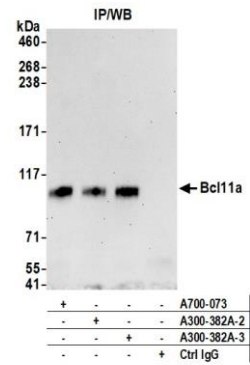
Western Blot	1:10,000 – 1:25,000
Immunoprecipitation	6 µg/mg lysate

ADDITIONAL INFO <https://www.fortislifecom.com/p/A300-382A-T>
Use the link above to view SDS, a current list of citations, and other product specific information.

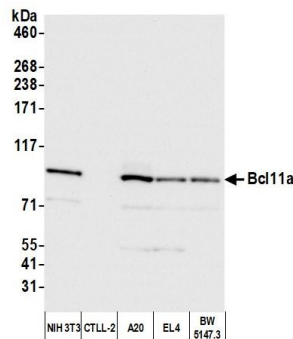
This document certifies that this product has met all of the quality control standards defined by Bethyl Laboratories, Inc.
Michael Spencer, PhD Date: January 31, 2024



Detection of human Bcl11a by western blot. *Samples:* Whole cell lysate (5 µg) from Ramos, MOLT-4, HEK293T, Raji, and Jurkat cells prepared using NETN lysis buffer. *Antibody:* Affinity purified rabbit anti-Bcl11a antibody (A300-382A lot 3) used for WB at 0.04 µg/ml. *Detection:* Chemiluminescence with an exposure time of 3 minutes.



Detection of human Bcl11a by western blot of immunoprecipitates. *Samples:* Whole cell lysate (1.0 mg per IP reaction; 5% of IP loaded) from Ramos cells prepared using NETN lysis buffer. *Antibodies:* Affinity purified rabbit anti-Bcl11a antibody (A300-382A lot 3) used for IP at 6 µg per reaction. Bcl11a was also immunoprecipitated by a previous lot of this antibody (A300-382A lot 2) and another antibody against a different epitope of Bcl11a (A700-073). For blotting immunoprecipitated Bcl11a, A700-073 was used at 1:1000. *Detection:* Chemiluminescence with an exposure time of 30 seconds.



Detection of mouse Bcl11a by western blot. *Samples:* Whole cell lysate (10 µg) from NIH 3T3, CTLL-2, A20, EL4, and BW5147.3 cells prepared using NETN lysis buffer. *Antibody:* Affinity purified rabbit anti-Bcl11a antibody (A300-382A lot 3) used for WB at 0.04 µg/ml. *Detection:* Chemiluminescence with an exposure time of 3 seconds.