



# SZABO SCANDIC

Part of Europa Biosite

## Produktinformation



Forschungsprodukte & Biochemikalien



Zellkultur & Verbrauchsmaterial



Diagnostik & molekulare Diagnostik



Laborgeräte & Service

Weitere Information auf den folgenden Seiten!  
See the following pages for more information!



### Lieferung & Zahlungsart

siehe unsere [Liefer- und Versandbedingungen](#)

### Zuschläge

- Mindermengenzuschlag
- Trockeneiszuschlag
- Gefahrgutzuschlag
- Expressversand

### SZABO-SCANDIC HandelsgmbH

Quellenstraße 110, A-1100 Wien

T. +43(0)1 489 3961-0

F. +43(0)1 489 3961-7

[mail@szabo-scandic.com](mailto:mail@szabo-scandic.com)

[www.szabo-scandic.com](http://www.szabo-scandic.com)

[linkedin.com/company/szaboscandic](https://www.linkedin.com/company/szaboscandic) 

# Bcl11a Antibody

Rabbit Polyclonal

Antigen Affinity Purified

Protein ID Q9H165

Catalog No. A300-382A

GeneID 53335

Lot No. A300-382A-3



<b>APPLICATIONS</b>	WB, IP
<b>SPECIES REACTIVITY</b>	Human, Mouse
<b>AMOUNT</b>	100 µl
<b>CONCENTRATION</b>	1000 µg/ml
<b>STORAGE/SHELF LIFE</b>	2 – 8° C / 1 year from date of receipt
<b>PHYSICAL STATE</b>	Liquid
<b>BUFFER</b>	Tris-citrate/phosphate buffer, pH 7 to 8 containing 0.09% Sodium Azide
<b>ISOTYPE</b>	IgG
<b>ORIGIN</b>	USA
<b>PRODUCTION PROCEDURES</b>	Antibody was affinity purified using an epitope specific to Bcl11a immobilized on solid support.

The epitope recognized by A300-382A maps to a region between residue 775 and the C-terminus (residue 835) of human B-cell CLL/Lymphoma 11A using the numbering given in Swiss-Prot entry Q9H165 (GeneID 53335).

Immunoglobulin concentration was determined by extinction coefficient: absorbance at 280 nm of 1.4 equals 1.0 mg of IgG.

**APPLICATIONS** Centrifuge tube to remove product from lid. Optimal working dilutions should be determined experimentally by the investigator. Prepare working dilution immediately before use.

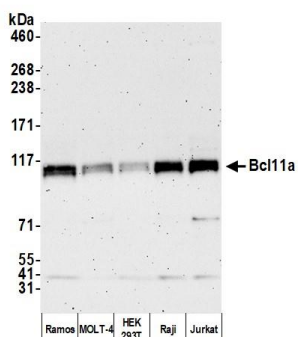
Western Blot 1:10,000 – 1:25,000

Immunoprecipitation 2 – 10 µg/mg lysate

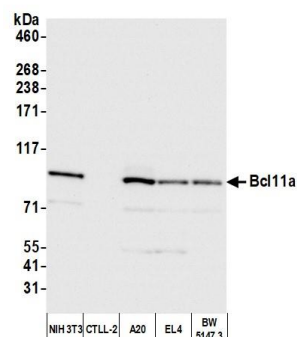
**ADDITIONAL INFO** <https://www.bethyl.com/product/A300-382A>

Use the link above to view SDS, a current list of citations, and other product specific information. IP-western blot protocol: [https://www.bethyl.com/content/protocol\\_IP\\_WB](https://www.bethyl.com/content/protocol_IP_WB)

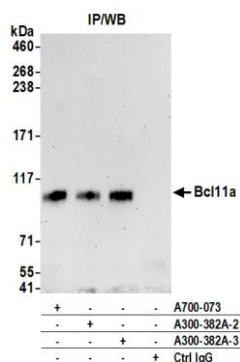
This document certifies that this product has met all of the quality control standards defined by Bethyl Laboratories, Inc.  
Brian McWilliams, PhD Date: April 5, 2021



**Detection of human Bcl11a by western blot.** *Samples:* Whole cell lysate (5 µg) from Ramos, MOLT-4, HEK293T, Raji, and Jurkat cells prepared using NETN lysis buffer. *Antibody:* Affinity purified rabbit anti-Bcl11a antibody (A300-382A lot 3) used for WB at 0.04 µg/ml. *Detection:* Chemiluminescence with an exposure time of 3 minutes.



**Detection of mouse Bcl11a by western blot.** *Samples:* Whole cell lysate (10 µg) from NIH 3T3, CTLL-2, A20, EL4, and BW5147.3 cells prepared using NETN lysis buffer. *Antibody:* Affinity purified rabbit anti-Bcl11a antibody (A300-382A lot 3) used for WB at 0.04 µg/ml. *Detection:* Chemiluminescence with an exposure time of 3 seconds.



**Detection of human Bcl11a by western blot of immunoprecipitates.** *Samples:* Whole cell lysate (1.0 mg per IP reaction; 5% of IP loaded) from Ramos cells prepared using NETN lysis buffer. *Antibodies:* Affinity purified rabbit anti-Bcl11a antibody (A300-382A lot 3) used for IP at 6 µg per reaction. Bcl11a was also immunoprecipitated by a previous lot of this antibody (A300-382A lot 2) and another antibody against a different epitope of Bcl11a (A700-073). For blotting immunoprecipitated Bcl11a, A700-073 was used at 1:1000. *Detection:* Chemiluminescence with an exposure time of 30 seconds.