



SZABO SCANDIC

Part of Europa Biosite

Produktinformation



Forschungsprodukte & Biochemikalien



Zellkultur & Verbrauchsmaterial



Diagnostik & molekulare Diagnostik



Laborgeräte & Service

Weitere Information auf den folgenden Seiten!
See the following pages for more information!



Lieferung & Zahlungsart

siehe unsere [Liefer- und Versandbedingungen](#)

Zuschläge

- Mindermengenzuschlag
- Trockeneiszuschlag
- Gefahrgutzuschlag
- Expressversand

SZABO-SCANDIC HandelsgmbH

Quellenstraße 110, A-1100 Wien

T. +43(0)1 489 3961-0

F. +43(0)1 489 3961-7

mail@szabo-scandic.com

www.szabo-scandic.com

[linkedin.com/company/szaboscandic](https://www.linkedin.com/company/szaboscandic) 

Bcl11b Antibody

Rabbit Polyclonal

Antigen Affinity Purified	Protein ID	Q9C0K0
Catalog No. A300-383A	GeneID	64919
Lot No. A300-383A-3		

APPLICATIONS	WB, IP
SPECIES REACTIVITY	Human
PRESUMED REACTIVITY	Based on 100% sequence identity, this antibody is predicted to react with Mouse
AMOUNT	100 µl
CONCENTRATION	1000 µg/ml
STORAGE/SHELF LIFE	2 – 8°C / 1 year from date of receipt
PHYSICAL STATE	Liquid
BUFFER	Tris-citrate/phosphate buffer, pH 7 to 8 containing 0.09% Sodium Azide
ISOTYPE	IgG
ORIGIN	USA
PRODUCTION PROCEDURES	Antibody was affinity purified using an epitope specific to Bcl11b immobilized on solid support.

The epitope recognized by A300-383A maps to a region between residues 1 and 50 of human B-cell CLL/lymphoma 11B using the numbering given in entry NP_612808.1 (GeneID 64919).

Immunoglobulin concentration was determined by extinction coefficient: absorbance at 280 nm of 1.4 equals 1.0 mg of IgG.

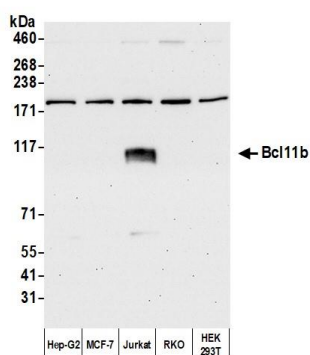
APPLICATIONS Centrifuge tube to remove product from lid. Optimal working dilutions should be determined experimentally by the investigator. Prepare working dilution immediately before use.

Western Blot 1:10,000 – 1:25,000

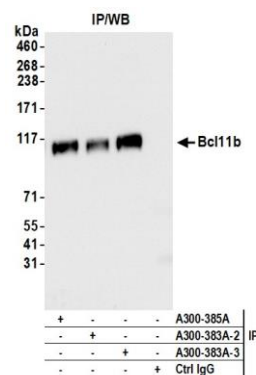
Immunoprecipitation 2 – 10 µg/mg lysate

ADDITIONAL INFO <https://www.bethyl.com/product/A300-383A>
Use the link above to view SDS, a current list of citations, and other product specific information.
IP-western blot protocol: https://www.bethyl.com/content/protocol_IP_WB

This document certifies that this product has met all of the quality control standards defined by Bethyl Laboratories, Inc.
Michael Spencer, PhD Date: March 18, 2022



Detection of human Bcl11b by western blot. *Samples:* Whole cell lysate (5 µg) from Hep-G2, MCF-7, Jurkat, RKO, and HEK293T cells prepared using NETN lysis buffer. *Antibody:* Affinity purified rabbit anti-Bcl11b antibody (A300-383A lot 3) used for WB at 0.04 µg/ml. *Detection:* Chemiluminescence with an exposure time of 3 seconds.



Detection of human Bcl11b by western blot of immunoprecipitates. *Samples:* Whole cell lysate (1.0 mg per IP reaction; 10% of IP loaded) from Jurkat cells. *Antibodies:* Affinity purified rabbit anti-Bcl11b antibody (A300-383A lot 3) used for IP at 6 µg per reaction. Bcl11b was also immunoprecipitated by a previous lot of this antibody (A300-383A lot 2) and a second antibody against a different epitope of Bcl11b (A300-385A). For blotting immunoprecipitated Bcl11b, A300-383A was used at 0.04 µg/ml. *Detection:* Chemiluminescence with an exposure time of 3 seconds.