



SZABO SCANDIC

Part of Europa Biosite

Produktinformation



Forschungsprodukte & Biochemikalien



Zellkultur & Verbrauchsmaterial



Diagnostik & molekulare Diagnostik



Laborgeräte & Service

Weitere Information auf den folgenden Seiten!
See the following pages for more information!



Lieferung & Zahlungsart

siehe unsere [Liefer- und Versandbedingungen](#)

Zuschläge

- Mindermengenzuschlag
- Trockeneiszuschlag
- Gefahrgutzuschlag
- Expressversand

SZABO-SCANDIC HandelsgmbH

Quellenstraße 110, A-1100 Wien

T. +43(0)1 489 3961-0

F. +43(0)1 489 3961-7

mail@szabo-scandic.com

www.szabo-scandic.com

[linkedin.com/company/szaboscandic](https://www.linkedin.com/company/szaboscandic) 

BubR1 Antibody

Rabbit Polyclonal

Antigen Affinity Purified

Protein ID Q8WV50

Catalog No. A300-386A-T

GeneID 701

Lot No. A300-386A-T-3



APPLICATIONS	WB, IP
SPECIES REACTIVITY	Human, Mouse, Rat
AMOUNT	20 µl (2 blots)
CONCENTRATION	40 µg/ml
STORAGE/SHELF LIFE	2 – 8° C / 1 year from date of receipt
PHYSICAL STATE	Liquid
BUFFER	Tris-buffered Saline containing 0.1% BSA and 0.09% Sodium Azide
ISOTYPE	IgG
ORIGIN	USA
PRODUCTION PROCEDURES	Antibody was affinity purified using an epitope specific to BubR1 immobilized on solid support.

The epitope recognized by A300-386A-T maps to a region between residues 350 and 400 of human budding uninhibited by benzimidazoles 1 homolog beta using the numbering given in TrEMBL entry Q8WV50 (GeneID 701).

APPLICATIONS Centrifuge tube to remove product from lid. Optimal working dilutions should be determined experimentally by the investigator. Prepare working dilution immediately before use.

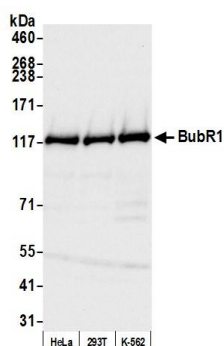
Western Blot 1:1000

Immunoprecipitation The antibody contained within A300-386A-T has been qualified for use in immunoprecipitation; however, we recommend using the alternative formulation of this antibody found as product A300-386A.

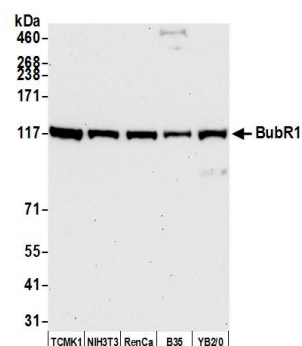
ADDITIONAL INFO <https://www.bethyl.com/product/A300-386A-T>

Use the link above to view SDS, a current list of citations, and other product specific information. IP-western blot protocol: https://www.bethyl.com/content/protocol_IP_WB

This document certifies that this product has met all of the quality control standards defined by Bethyl Laboratories, Inc.
Eric McIntush, PhD | Chief Scientific Officer Date: April 23, 2020



Detection of human BubR1 by western blot. *Samples:* Whole cell lysate (50 μ g) from HeLa, HEK293T, and K-562 cells prepared using NETN lysis buffer. *Antibody:* Affinity purified rabbit anti-BubR1 antibody A300-386A-T (lot A300-386A-T-3) used for WB at 1:1000. *Detection:* Chemiluminescence with an exposure time of 3 seconds.



Detection of mouse and rat BubR1 by western blot. *Samples:* Whole cell lysate (50 μ g) from TCMK-1, NIH 3T3, RenCa, B35, and YB2/O cells prepared using NETN lysis buffer. *Antibody:* Affinity purified rabbit anti-BubR1 antibody A300-386A-T (lot A300-386A-T-3) used for WB at 1:1000. *Detection:* Chemiluminescence with an exposure time of 30 seconds.