



SZABO SCANDIC

Part of Europa Biosite

Produktinformation



Forschungsprodukte & Biochemikalien



Zellkultur & Verbrauchsmaterial



Diagnostik & molekulare Diagnostik



Laborgeräte & Service

Weitere Information auf den folgenden Seiten!
See the following pages for more information!



Lieferung & Zahlungsart

siehe unsere [Liefer- und Versandbedingungen](#)

Zuschläge

- Mindermengenzuschlag
- Trockeneiszuschlag
- Gefahrgutzuschlag
- Expressversand

SZABO-SCANDIC HandelsgmbH

Quellenstraße 110, A-1100 Wien

T. +43(0)1 489 3961-0

F. +43(0)1 489 3961-7

mail@szabo-scandic.com

www.szabo-scandic.com

[linkedin.com/company/szaboscandic](https://www.linkedin.com/company/szaboscandic) 

DHX15 Antibody

Rabbit Polyclonal

Antigen Affinity Purified

Protein ID O43143

Catalog No. A300-389A

GeneID 1665

Lot No. A300-389A-1



APPLICATIONS	WB, IHC
SPECIES REACTIVITY	Human
PRESUMED REACTIVITY	Based on 100% sequence identity, this antibody is predicted to react with Mouse and Orangutan
AMOUNT	100 µl
CONCENTRATION	1000 µg/ml
STORAGE/SHELF LIFE	2 - 8° C / 1 year from date of receipt
PHYSICAL STATE	Liquid
BUFFER	Tris-citrate/phosphate buffer, pH 7 to 8 containing 0.09% Sodium Azide
ISOTYPE	IgG
ORIGIN	USA
PRODUCTION PROCEDURES	Antibody was affinity purified using an epitope specific to DHX15 immobilized on solid support.

The epitope recognized by A300-389A maps to a region between residues 350 and 400 of human DEAH (Asp-Glu-Ala-His) Box Polypeptide 15 using the numbering given in Swiss-Prot entry O43143 (GeneID 1665).

Immunoglobulin concentration was determined by extinction coefficient: absorbance at 280 nm of 1.4 equals 1.0 mg of IgG.

APPLICATIONS Centrifuge tube to remove product from lid. Optimal working dilutions should be determined experimentally by the investigator. Prepare working dilution immediately before use.

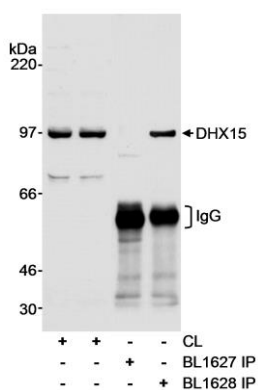
Western Blot	1:5,000 - 1:15,000
Immunoprecipitation	Not recommended. A300-390A has performed well and is suggested for IP.
Immunohistochemistry	1:500 - 1:2,000. Epitope retrieval with citrate buffer pH 6.0 is recommended for FFPE tissue sections.

APPLICATION NOTES Western blot of lysates performed using standard western blot reagents and 4-8% SDS-PAGE.

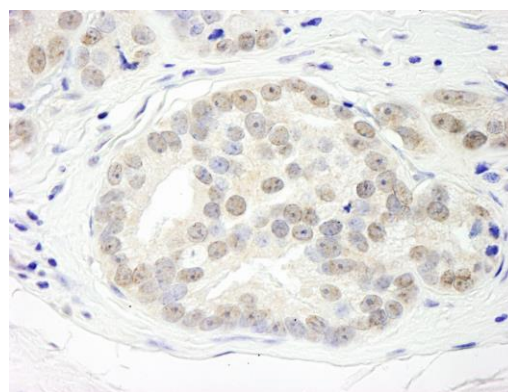
IHC HUMAN CONTROLS Breast Carcinoma, Ovarian Carcinoma, Prostate Carcinoma

ADDITIONAL INFO <https://www.bethyl.com/product/A300-389A>
Use the link above to view SDS, a current list of citations, and other product specific information.

This document certifies that this product has met all of the quality control standards defined by Bethyl Laboratories, Inc.
Eric McIntush, PhD | Chief Scientific Officer Date: June 21, 2019



Detection of human DHX15 by western blot and immunoprecipitation. *Samples:* Whole cell lysate (CL; 60 μ g for WB, 1 mg for IP) from HEK293T cells. *Antibodies:* Affinity purified rabbit anti-DHX15 antibody BL1627 (Cat. No. A300-389A) used at 0.1 μ g/ml for WB and at 1 μ g/mg lysate for IP, which did not precipitate DHX15. Successful IP of DHX15 was accomplished using affinity purified rabbit anti-DHX15 antibody BL1628 (Cat. No. A300-390A) at 1 μ g/mg lysate. *Detection:* Chemiluminescence with an exposure time of 15 seconds.



Detection of human DHX15 by immunohistochemistry. *Sample:* FFPE section of human prostate carcinoma. *Antibody:* Affinity purified rabbit anti-DHX15 (Cat. No. A300-389A) used at a dilution of 1:1,000 (1 μ g/ml). *Detection:* DAB