



# SZABO SCANDIC

Part of Europa Biosite

## Produktinformation



Forschungsprodukte & Biochemikalien



Zellkultur & Verbrauchsmaterial



Diagnostik & molekulare Diagnostik



Laborgeräte & Service

Weitere Information auf den folgenden Seiten!  
See the following pages for more information!



### Lieferung & Zahlungsart

siehe unsere [Liefer- und Versandbedingungen](#)

### Zuschläge

- Mindermengenzuschlag
- Trockeneiszuschlag
- Gefahrgutzuschlag
- Expressversand

### SZABO-SCANDIC HandelsgmbH

Quellenstraße 110, A-1100 Wien

T. +43(0)1 489 3961-0

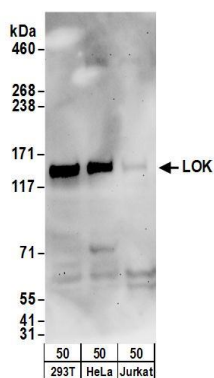
F. +43(0)1 489 3961-7

[mail@szabo-scandic.com](mailto:mail@szabo-scandic.com)

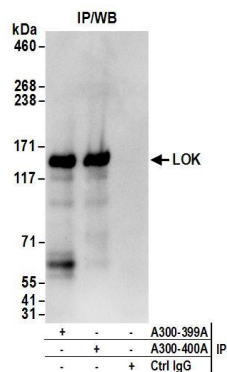
[www.szabo-scandic.com](http://www.szabo-scandic.com)

[linkedin.com/company/szaboscandic](https://www.linkedin.com/company/szaboscandic) 





**Detection of human LOK by western blot.** *Samples:* Whole cell lysate (50 µg) from HEK293T, HeLa, and Jurkat cells. *Antibodies:* Affinity purified rabbit anti-LOK antibody A300-399A (lot A300-399A-2) used for WB at 0.1 µg/ml. *Detection:* Chemiluminescence with an exposure time of 3 minutes.



**Detection of human LOK by western blot of immunoprecipitates.** *Samples:* Whole cell lysate (1 mg for IP; 20% of IP loaded) from HEK293T cells. *Antibodies:* Affinity purified rabbit anti-LOK antibody A300-399A (lot A300-399A-2) used for IP at 6 µg/mg lysate. LOK was also immunoprecipitated by rabbit anti-LOK antibody A300-400A. For blotting immunoprecipitated LOK, A300-399A was used at 1 µg/ml. *Detection:* Chemiluminescence with an exposure time of 10 seconds.