



# SZABO SCANDIC

Part of Europa Biosite

## Produktinformation



Forschungsprodukte & Biochemikalien



Zellkultur & Verbrauchsmaterial



Diagnostik & molekulare Diagnostik



Laborgeräte & Service

Weitere Information auf den folgenden Seiten!  
See the following pages for more information!



### Lieferung & Zahlungsart

siehe unsere [Liefer- und Versandbedingungen](#)

### Zuschläge

- Mindermengenzuschlag
- Trockeneiszuschlag
- Gefahrgutzuschlag
- Expressversand

### SZABO-SCANDIC HandelsgmbH

Quellenstraße 110, A-1100 Wien

T. +43(0)1 489 3961-0

F. +43(0)1 489 3961-7

[mail@szabo-scandic.com](mailto:mail@szabo-scandic.com)

[www.szabo-scandic.com](http://www.szabo-scandic.com)

[linkedin.com/company/szaboscandic](https://www.linkedin.com/company/szaboscandic) 

# SNX1 Antibody

Rabbit Polyclonal

Antigen Affinity Purified	RefSeq ID	NP_003090.2
Catalog No. A300-402A-T	Uniprot ID	Q13596
Lot No. 3	GeneID	6642

---

<b>APPLICATIONS</b>	WB, IHC, ICC
<b>SPECIES REACTIVITY</b>	Human
<b>PRESUMED REACTIVITY</b>	Based on 100% sequence identity, this antibody is predicted to react with Mouse, Rat, Zebrafish, X. laevis, X. tropicalis, Chicken, Turkey, Bovine, Dog, Horse, Rabbit, Pig, Panda, Orangutan and Monkey
<b>AMOUNT</b>	10 µl
<b>CONCENTRATION</b>	1000 µg/ml
<b>STORAGE/SHELF LIFE</b>	2 – 8°C / 1 year from date of receipt
<b>PHYSICAL STATE</b>	Liquid
<b>BUFFER</b>	Tris-citrate/phosphate buffer, pH 7 to 8 containing 0.09% Sodium Azide
<b>ISOTYPE</b>	IgG
<b>ORIGIN</b>	USA
<b>PRODUCTION PROCEDURES</b>	Antibody was affinity purified using an epitope specific to SNX1 immobilized on solid support.

The epitope recognized by A300-402A maps to a region between residue 475 and the C-terminus (residue 422) of human Sorting Nexin 1 using the numbering given in entry NP\_003090.2 (GeneID 6642).

Immunoglobulin concentration was determined using Beer's Law where 1mg/mL IgG has an A280 of 1.4.

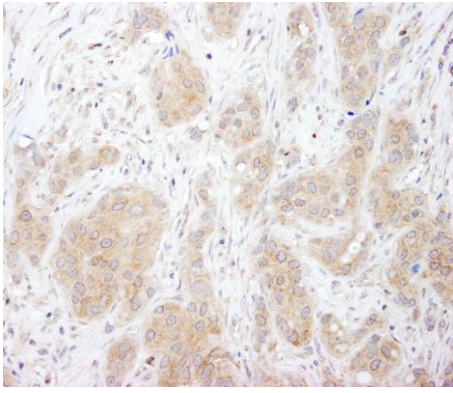
**APPLICATIONS** Centrifuge tube to remove product from lid. Optimal working dilutions should be determined experimentally by the investigator. Prepare working dilution immediately before use.

Western Blot	1:500 – 1:5000
Immunohistochemistry	1:500 – 1:2000. Epitope retrieval with Tris-EDTA pH 9.0 is recommended for FFPE tissue sections.
Immunocytochemistry	1:100 – 1:500

**IHC HUMAN CONTROLS** Breast Carcinoma, Colon Carcinoma

**ADDITIONAL INFO** <https://www.fortislife.com/p/A300-402A-T>  
Use the link above to view SDS, a current list of citations, and other product specific information.

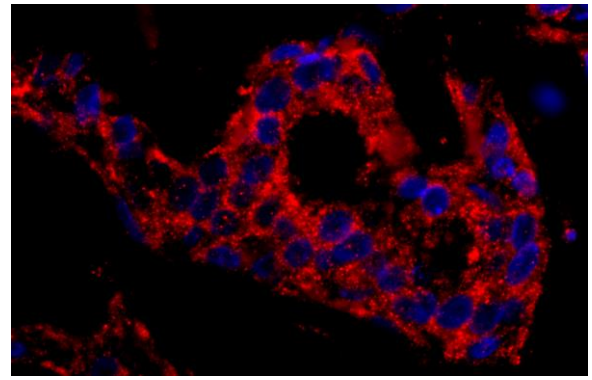
This document certifies that this product has met all of the quality control standards defined by Bethyl Laboratories, Inc.  
Michael Spencer, PhD Date: January 31, 2024

**Detection of human SNX1 by immunohistochemistry.**

*Sample:* FFPE section of human breast carcinoma.

*Antibody:* Affinity purified rabbit anti-SNX1 (Cat. No. A300-402A Lot3) used at a dilution of 1:1,000 (1 µg/ml).

*Detection:* DAB

**Detection of human SNX1 by immunohistochemistry.**

*Sample:* FFPE section of human breast carcinoma.

*Antibody:* Affinity purified rabbit anti-SNX1 (Cat. No. A300-402A Lot3) used at a dilution of 1:400 (2.5 µg/ml).

*Detection:* Red-fluorescent goat anti-rabbit IgG highly cross-adsorbed Antibody used at a dilution of 1:100.