



# SZABO SCANDIC

Part of Europa Biosite

## Produktinformation



Forschungsprodukte & Biochemikalien



Zellkultur & Verbrauchsmaterial



Diagnostik & molekulare Diagnostik



Laborgeräte & Service

Weitere Information auf den folgenden Seiten!  
See the following pages for more information!



### Lieferung & Zahlungsart

siehe unsere [Liefer- und Versandbedingungen](#)

### Zuschläge

- Mindermengenzuschlag
- Trockeneiszuschlag
- Gefahrgutzuschlag
- Expressversand

### SZABO-SCANDIC HandelsgmbH

Quellenstraße 110, A-1100 Wien

T. +43(0)1 489 3961-0

F. +43(0)1 489 3961-7

[mail@szabo-scandic.com](mailto:mail@szabo-scandic.com)

[www.szabo-scandic.com](http://www.szabo-scandic.com)

[linkedin.com/company/szaboscandic](https://www.linkedin.com/company/szaboscandic) 

# G6PD Antibody

Rabbit Polyclonal

Antigen Affinity Purified Protein ID NP\_000393.2

Catalog No. A300-404A GeneID 2539

Lot No. A300-404A-5

---

<b>APPLICATIONS</b>	WB
<b>SPECIES REACTIVITY</b>	Human, Mouse
<b>AMOUNT</b>	100 µl
<b>CONCENTRATION</b>	1000 µg/ml
<b>STORAGE/SHELF LIFE</b>	2 - 8°C / 1 year from date of receipt
<b>PHYSICAL STATE</b>	Liquid
<b>BUFFER</b>	Tris-citrate/phosphate buffer, pH 7 to 8 containing 0.09% Sodium Azide
<b>ISOTYPE</b>	IgG
<b>ORIGIN</b>	USA
<b>PRODUCTION PROCEDURES</b>	Antibody was affinity purified using an epitope specific to G6PD immobilized on solid support.

The epitope recognized by A300-404A maps to a region between residues 50 and 100 of human Glucose-6-Phosphate Dehydrogenase using the numbering given in entry NP\_000393.2 (GeneID 2539).

Immunoglobulin concentration was determined by extinction coefficient: absorbance at 280 nm of 1.4 equals 1.0 mg of IgG.

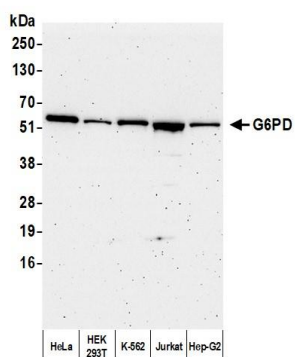
**APPLICATIONS** Centrifuge tube to remove product from lid. Optimal working dilutions should be determined experimentally by the investigator. Prepare working dilution immediately before use.

Western Blot 1:2,000 - 1:10,000

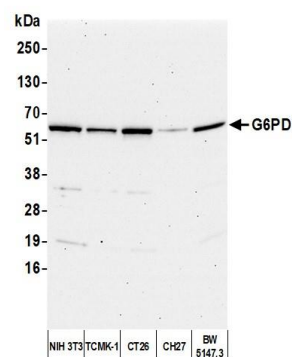
**ADDITIONAL INFO** <https://www.bethyl.com/product/A300-404A>

Use the link above to view SDS, a current list of citations, and other product specific information. IP-western blot protocol: [https://www.bethyl.com/content/protocol\\_IP\\_WB](https://www.bethyl.com/content/protocol_IP_WB)

This document certifies that this product has met all of the quality control standards defined by Bethyl Laboratories, Inc.  
Michael Spencer, PhD Date: April 25, 2022



**Detection of human G6PD by western blot. Samples:** Whole cell lysate (5  $\mu$ g) from HeLa, HEK293T, K-562, Jurkat, and Hep-G2 cells prepared using NETN lysis buffer. **Antibody:** Affinity purified rabbit anti-G6PD antibody (A300-404A lot 5) used for WB at 0.1  $\mu$ g/ml. **Detection:** Chemiluminescence with an exposure time of 3 minutes.



**Detection of human G6PD by western blot. Samples:** Whole cell lysate (5  $\mu$ g) from NIH 3T3, TCMK-1, CT26, CH27, and BW5147.3 cells prepared using NETN lysis buffer. **Antibody:** Affinity purified rabbit anti-G6PD antibody (A300-404A lot 5) used for WB at 0.1  $\mu$ g/ml. **Detection:** Chemiluminescence with an exposure time of 30 seconds.