



# SZABO SCANDIC

Part of Europa Biosite

## Produktinformation



Forschungsprodukte & Biochemikalien



Zellkultur & Verbrauchsmaterial



Diagnostik & molekulare Diagnostik



Laborgeräte & Service

Weitere Information auf den folgenden Seiten!  
See the following pages for more information!



### Lieferung & Zahlungsart

siehe unsere [Liefer- und Versandbedingungen](#)

### Zuschläge

- Mindermengenzuschlag
- Trockeneiszuschlag
- Gefahrgutzuschlag
- Expressversand

### SZABO-SCANDIC HandelsgmbH

Quellenstraße 110, A-1100 Wien

T. +43(0)1 489 3961-0

F. +43(0)1 489 3961-7

[mail@szabo-scandic.com](mailto:mail@szabo-scandic.com)

[www.szabo-scandic.com](http://www.szabo-scandic.com)

[linkedin.com/company/szaboscandic](https://www.linkedin.com/company/szaboscandic) 

# LIS-1 Antibody

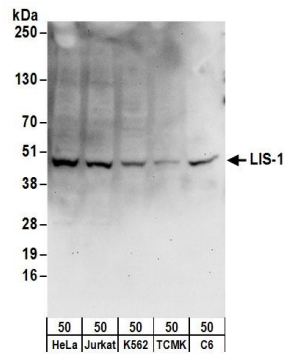
Rabbit Polyclonal

Antigen Affinity Purified	Protein ID	NP_000421.1
Catalog No. A300-409A	GeneID	5048
Lot No. A300-409A-2		



<b>APPLICATIONS</b>	WB
<b>SPECIES REACTIVITY</b>	Human, Mouse, Rat
<b>PRESUMED REACTIVITY</b>	Based on 100% sequence identity, this antibody is predicted to react with Zebrafish, X. laevis, X. tropicalis, Chicken, Bovine, Pig, Cat, Orangutan and Chimpanzee
<b>AMOUNT</b>	100 µl
<b>CONCENTRATION</b>	1000 µg/ml
<b>STORAGE/SHELF LIFE</b>	2 – 8° C / 1 year from date of receipt
<b>PHYSICAL STATE</b>	Liquid
<b>BUFFER</b>	Tris-citrate/phosphate buffer, pH 7 to 8 containing 0.09% Sodium Azide
<b>ISOTYPE</b>	IgG
<b>ORIGIN</b>	USA
<b>PRODUCTION PROCEDURES</b>	Antibody was affinity purified using an epitope specific to LIS-1 immobilized on solid support.  The epitope recognized by A300-409A maps to a region between residue 1 and 50 of human Lissencephaly 1 using the numbering given in entry NP_000421.1 (GeneID 5048).  Immunoglobulin concentration was determined by extinction coefficient: absorbance at 280 nm of 1.4 equals 1.0 mg of IgG.
<b>APPLICATIONS</b>	Centrifuge tube to remove product from lid. Optimal working dilutions should be determined experimentally by the investigator. Prepare working dilution immediately before use.  Western Blot                      1:500 – 1:2,500
<b>APPLICATION NOTES</b>	Western blot of lysates performed using standard western blot reagents and 4–20% SDS-PAGE.
<b>ADDITIONAL INFO</b>	<a href="https://www.bethyl.com/product/A300-409A">https://www.bethyl.com/product/A300-409A</a> Use the link above to view SDS, a current list of citations, and other product specific information.

This document certifies that this product has met all of the quality control standards defined by Bethyl Laboratories, Inc.  
Eric McIntush, PhD | Chief Scientific Officer                      Date: June 21, 2019



**Detection of human, mouse and rat LIS-1 by western blot.** *Samples:* Whole cell lysate (50 µg) from HeLa, HEK293T, K-562, mouse TCMK-1, and rat C6 cells. *Antibodies:* Affinity purified rabbit anti-LIS-1 antibody A300-409A (lot A300-409A-2) used for WB at 1 µg/ml. *Detection:* Chemiluminescence with an exposure time of 30 seconds.