



SZABO SCANDIC

Part of Europa Biosite

Produktinformation



Forschungsprodukte & Biochemikalien



Zellkultur & Verbrauchsmaterial



Diagnostik & molekulare Diagnostik



Laborgeräte & Service

Weitere Information auf den folgenden Seiten!
See the following pages for more information!



Lieferung & Zahlungsart

siehe unsere [Liefer- und Versandbedingungen](#)

Zuschläge

- Mindermengenzuschlag
- Trockeneiszuschlag
- Gefahrgutzuschlag
- Expressversand

SZABO-SCANDIC HandelsgmbH

Quellenstraße 110, A-1100 Wien

T. +43(0)1 489 3961-0

F. +43(0)1 489 3961-7

mail@szabo-scandic.com

www.szabo-scandic.com

[linkedin.com/company/szaboscandic](https://www.linkedin.com/company/szaboscandic) 

CRSP3 Antibody

Rabbit Polyclonal

Antigen Affinity Purified

Protein ID Q9ULK4

Catalog No. A300-425A

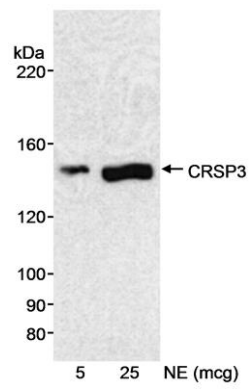
GeneID 9439

Lot No. A300-425A-1



APPLICATIONS	WB				
SPECIES REACTIVITY	Human				
AMOUNT	100 µl				
CONCENTRATION	1000 µg/ml				
STORAGE/SHELF LIFE	2 - 8° C / 1 year from date of receipt				
PHYSICAL STATE	Liquid				
BUFFER	Tris-citrate/phosphate buffer, pH 7 to 8 containing 0.09% Sodium Azide				
ISOTYPE	IgG				
ORIGIN	USA				
PRODUCTION PROCEDURES	<p>Antibody was affinity purified using an epitope specific to CRSP3 immobilized on solid support.</p> <p>The epitope recognized by A300-425A maps to a region between residues 1300 and the C-terminus (residue 1368) of human Cofactor Required for Sp1 transcriptional activation, subunit 3 using the numbering given in Swiss-Prot entry Q9ULK4 (GeneID 9439).</p> <p>Immunoglobulin concentration was determined by extinction coefficient: absorbance at 280 nm of 1.4 equals 1.0 mg of IgG.</p>				
APPLICATIONS	<p>Centrifuge tube to remove product from lid. Optimal working dilutions should be determined experimentally by the investigator. Prepare working dilution immediately before use.</p> <table><tr><td>Western Blot</td><td>1:1,000 - 1:5,000</td></tr><tr><td>Immunoprecipitation</td><td>Not recommended. Rabbit anti-CRSP3 Antibodies A300-423A and A300-424A are recommended for IP.</td></tr></table>	Western Blot	1:1,000 - 1:5,000	Immunoprecipitation	Not recommended. Rabbit anti-CRSP3 Antibodies A300-423A and A300-424A are recommended for IP.
Western Blot	1:1,000 - 1:5,000				
Immunoprecipitation	Not recommended. Rabbit anti-CRSP3 Antibodies A300-423A and A300-424A are recommended for IP.				
APPLICATION NOTES	Western blot of lysates performed using standard western blot reagents and 4-8% SDS-PAGE.				
ADDITIONAL INFO	<p>https://www.bethyl.com/product/A300-425A</p> <p>Use the link above to view SDS, a current list of citations, and other product specific information.</p>				

This document certifies that this product has met all of the quality control standards defined by Bethyl Laboratories, Inc.
Eric McIntush, PhD | Chief Scientific Officer Date: June 21, 2019



Detection of human CRSP3 by western blot. *Samples:* Nuclear extract (5 and 25 μg) from HeLa cells. *Antibody:* Affinity purified rabbit anti-CRSP3 antibody (Cat. No. A300-425A) used at 0.33 $\mu\text{g}/\text{ml}$. *Detection:* Chemiluminescence with an exposure time of 5 minutes.