



SZABO SCANDIC

Part of Europa Biosite

Produktinformation



Forschungsprodukte & Biochemikalien



Zellkultur & Verbrauchsmaterial



Diagnostik & molekulare Diagnostik



Laborgeräte & Service

Weitere Information auf den folgenden Seiten!
See the following pages for more information!



Lieferung & Zahlungsart

siehe unsere [Liefer- und Versandbedingungen](#)

Zuschläge

- Mindermengenzuschlag
- Trockeneiszuschlag
- Gefahrgutzuschlag
- Expressversand

SZABO-SCANDIC HandelsgmbH

Quellenstraße 110, A-1100 Wien

T. +43(0)1 489 3961-0

F. +43(0)1 489 3961-7

mail@szabo-scandic.com

www.szabo-scandic.com

[linkedin.com/company/szaboscandic](https://www.linkedin.com/company/szaboscandic) 

IRF3 Antibody

Rabbit Polyclonal

Antigen Affinity Purified

Protein ID Q14653

Catalog No. A300-426A

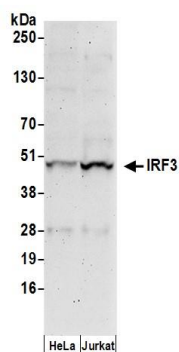
GeneID 3661

Lot No. A300-426A-1

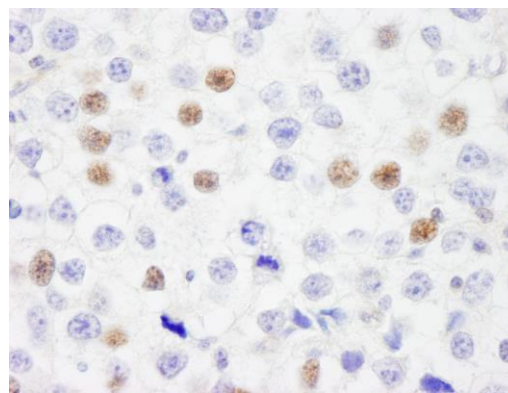


APPLICATIONS	WB, IHC
SPECIES REACTIVITY	Human
AMOUNT	100 µl
CONCENTRATION	1000 µg/ml
STORAGE/SHELF LIFE	2 - 8° C / 1 year from date of receipt
PHYSICAL STATE	Liquid
BUFFER	Tris-citrate/phosphate buffer, pH 7 to 8 containing 0.09% Sodium Azide
ISOTYPE	IgG
ORIGIN	USA
PRODUCTION PROCEDURES	<p>Antibody was affinity purified using an epitope specific to IRF3 immobilized on solid support.</p> <p>The epitope recognized by A300-426A maps to a region between residues 100 and 150 of human Interferon Regulatory Factor 3 using the numbering given in Swiss-Prot entry Q14653 (GeneID 3661).</p> <p>Immunoglobulin concentration was determined by extinction coefficient: absorbance at 280 nm of 1.4 equals 1.0 mg of IgG.</p>
APPLICATIONS	<p>Centrifuge tube to remove product from lid. Optimal working dilutions should be determined experimentally by the investigator. Prepare working dilution immediately before use.</p> <p>Western Blot 1:1,000 - 1:5,000</p> <p>Immunohistochemistry 1:200 - 1:1,000. Epitope retrieval with citrate buffer pH 6.0 is recommended for FFPE tissue sections.</p>
APPLICATION NOTES	Western blot of lysates performed using standard western blot reagents and 4-20% SDS-PAGE.
IHC HUMAN CONTROLS	Breast Carcinoma, Colon Carcinoma, Testicular Seminoma
ADDITIONAL INFO	<p>https://www.bethyl.com/product/A300-426A</p> <p>Use the link above to view SDS, a current list of citations, and other product specific information.</p>

This document certifies that this product has met all of the quality control standards defined by Bethyl Laboratories, Inc.
Eric McIntush, PhD | Chief Scientific Officer Date: June 21, 2019



Detection of human IRF3 by western blot. *Samples:* Whole cell lysate (50 μ g) from HeLa and Jurkat cells prepared using NETN lysis buffer. *Antibody:* Affinity purified rabbit anti-IRF3 antibody A300-426A (lot A300-426A-1) used for WB at 0.2 μ g/ml. *Detection:* Chemiluminescence with an exposure time of 3 minutes.



Detection of human IRF3 by immunohistochemistry. *Sample:* FFPE section of human testicular seminoma. *Antibody:* Affinity purified rabbit anti-IRF3 (Cat. No. A300-426A Lot1) used at a dilution of 1:1,000 (1 μ g/ml). *Detection:* DAB