



SZABO SCANDIC

Part of Europa Biosite

Produktinformation



Forschungsprodukte & Biochemikalien



Zellkultur & Verbrauchsmaterial



Diagnostik & molekulare Diagnostik



Laborgeräte & Service

Weitere Information auf den folgenden Seiten!
See the following pages for more information!



Lieferung & Zahlungsart

siehe unsere [Liefer- und Versandbedingungen](#)

Zuschläge

- Mindermengenzuschlag
- Trockeneiszuschlag
- Gefahrgutzuschlag
- Expressversand

SZABO-SCANDIC HandelsgmbH

Quellenstraße 110, A-1100 Wien

T. +43(0)1 489 3961-0

F. +43(0)1 489 3961-7

mail@szabo-scandic.com

www.szabo-scandic.com

[linkedin.com/company/szaboscandic](https://www.linkedin.com/company/szaboscandic) 

TPX2 Antibody

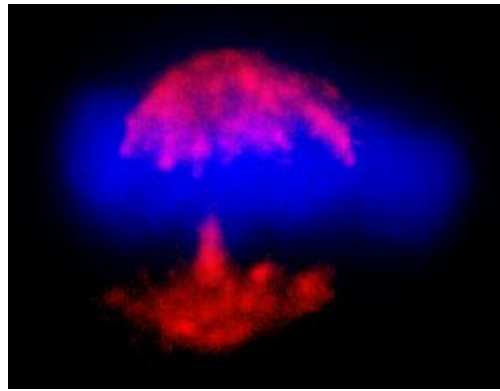
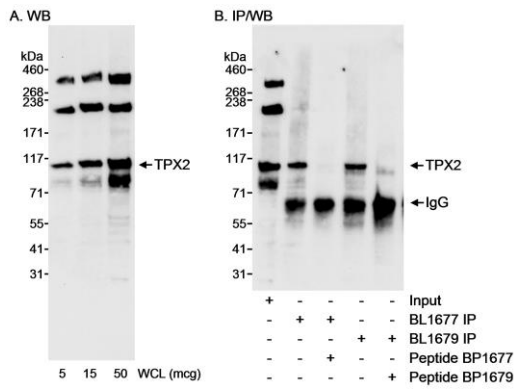
Rabbit Polyclonal

Antigen Affinity Purified Protein ID Q9ULW0
Catalog No. A300-429A GeneID 22974
Lot No. A300-429A-1



APPLICATIONS	WB, IP, ICC-IF						
SPECIES REACTIVITY	Human						
AMOUNT	100 µl						
CONCENTRATION	1000 µg/ml						
STORAGE/SHELF LIFE	2 - 8° C / 1 year from date of receipt						
PHYSICAL STATE	Liquid						
BUFFER	Tris-citrate/phosphate buffer, pH 7 to 8 containing 0.09% Sodium Azide						
ISOTYPE	IgG						
ORIGIN	USA						
PRODUCTION PROCEDURES	<p>Antibody was affinity purified using an epitope specific to TPX2 immobilized on solid support.</p> <p>The epitope recognized by A300-429A maps to a region between residues 150 and 200 of human TPX2 using the numbering given in Swiss-Prot entry Q9ULW0 (GeneID 22974).</p> <p>Immunoglobulin concentration was determined by extinction coefficient: absorbance at 280 nm of 1.4 equals 1.0 mg of IgG.</p>						
APPLICATIONS	<p>Centrifuge tube to remove product from lid. Optimal working dilutions should be determined experimentally by the investigator. Prepare working dilution immediately before use.</p> <table><tr><td>Western Blot</td><td>1:5,000 - 1:15,000</td></tr><tr><td>Immunoprecipitation</td><td>1 - 4 µg/mg lysate</td></tr><tr><td>Immunofluorescence (ICC)</td><td>1:250 - 1:1,000. Formaldehyde fixation is recommended. Permeabilization with Triton-X 100 is recommended for formaldehyde-fixed cells.</td></tr></table>	Western Blot	1:5,000 - 1:15,000	Immunoprecipitation	1 - 4 µg/mg lysate	Immunofluorescence (ICC)	1:250 - 1:1,000. Formaldehyde fixation is recommended. Permeabilization with Triton-X 100 is recommended for formaldehyde-fixed cells.
Western Blot	1:5,000 - 1:15,000						
Immunoprecipitation	1 - 4 µg/mg lysate						
Immunofluorescence (ICC)	1:250 - 1:1,000. Formaldehyde fixation is recommended. Permeabilization with Triton-X 100 is recommended for formaldehyde-fixed cells.						
APPLICATION NOTES	<p>Western blot of immunoprecipitates performed using Normal Pig Serum (Cat. No. S100-020), Goat anti-Rabbit Light Chain HRP Conjugate (Cat. No. A120-113P) and 4-8% SDS-PAGE (link to IP-western blot protocol in Additional Info section below).</p> <p>Western blot of lysates performed using standard western blot reagents and 4-8% SDS-PAGE.</p>						
IHC HUMAN CONTROLS	HeLa Cells						
ADDITIONAL INFO	<p>https://www.bethyl.com/product/A300-429A Use the link above to view SDS, a current list of citations, and other product specific information. IP-western blot protocol: https://www.bethyl.com/content/protocol_IP_WB</p>						

This document certifies that this product has met all of the quality control standards defined by Bethyl Laboratories, Inc.
Eric McIntush, PhD | Chief Scientific Officer Date: June 21, 2019



Detection of human TPX2 by western blot and immunoprecipitation. *Samples:* Whole cell lysate (WCL; 5, 15, 50 µg for A; 50 µg for Input and 1 mg for IP in B) from HeLa cells. *Antibodies:* Affinity purified rabbit anti-TPX2 antibody BL1677 (Cat. No. A300-429A) used at 0.1 µg/ml for WB (A & B) and at 0.4 µg/mg lysate for IP (B). TPX2 was also immunoprecipitated using rabbit anti-TPX2 antibody BL1679 (Cat. No. A300-430A) at 0.4 µg/mg lysate. *Detection:* Chemiluminescence with an exposure time of 1 minute.

Detection of human TPX2 by immunocytochemistry. *Sample:* Formaldehyde-fixed asynchronous HeLa cell. *Antibody:* Affinity purified rabbit anti-TPX2 (Cat. No. A300-429A Lot1) used at a dilution of 1:400 (2.5 µg/ml). *Detection:* Red-fluorescent goat anti-rabbit IgG-heavy and light chain, cross-adsorbed Antibody DyLight® 594 Conjugated used at a dilution of 1:100