



# SZABO SCANDIC

Part of Europa Biosite

## Produktinformation



Forschungsprodukte & Biochemikalien



Zellkultur & Verbrauchsmaterial



Diagnostik & molekulare Diagnostik



Laborgeräte & Service

Weitere Information auf den folgenden Seiten!  
See the following pages for more information!



### Lieferung & Zahlungsart

siehe unsere [Liefer- und Versandbedingungen](#)

### Zuschläge

- Mindermengenzuschlag
- Trockeneiszuschlag
- Gefahrgutzuschlag
- Expressversand

### SZABO-SCANDIC HandelsgmbH

Quellenstraße 110, A-1100 Wien

T. +43(0)1 489 3961-0

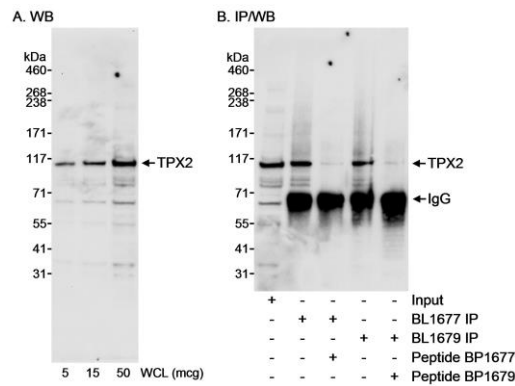
F. +43(0)1 489 3961-7

[mail@szabo-scandic.com](mailto:mail@szabo-scandic.com)

[www.szabo-scandic.com](http://www.szabo-scandic.com)

[linkedin.com/company/szaboscandic](https://www.linkedin.com/company/szaboscandic) 





**Detection of human TPX2 by western blot and immunoprecipitation.** *Samples:* Whole cell lysate (WCL; 5, 15, 50 µg for A; 50 µg for Input and 1 mg for IP in B) from HeLa cells. *Antibodies:* Affinity purified rabbit anti-TPX2 antibody BL1679 (Cat. No. A300-430A) used at 0.1 µg/ml for WB (A &B) and at 0.4 µg/mg lysate for IP (B). TPX2 was also immunoprecipitated using rabbit anti-TPX2 antibody BL1677 (Cat. No. A300-429A) at 0.4 µg/mg lysate. *Detection:* Chemiluminescence with an exposure time of 1 minute.