



# SZABO SCANDIC

Part of Europa Biosite

## Produktinformation



Forschungsprodukte & Biochemikalien



Zellkultur & Verbrauchsmaterial



Diagnostik & molekulare Diagnostik



Laborgeräte & Service

Weitere Information auf den folgenden Seiten!  
See the following pages for more information!



### Lieferung & Zahlungsart

siehe unsere [Liefer- und Versandbedingungen](#)

### Zuschläge

- Mindermengenzuschlag
- Trockeneiszuschlag
- Gefahrgutzuschlag
- Expressversand

### SZABO-SCANDIC HandelsgmbH

Quellenstraße 110, A-1100 Wien

T. +43(0)1 489 3961-0

F. +43(0)1 489 3961-7

[mail@szabo-scandic.com](mailto:mail@szabo-scandic.com)

[www.szabo-scandic.com](http://www.szabo-scandic.com)

[linkedin.com/company/szaboscandic](https://www.linkedin.com/company/szaboscandic) 

# Aurora B Antibody

Rabbit Polyclonal

Antigen Affinity Purified

Protein ID Q96GD4

Catalog No. A300-431A

GeneID 9212

Lot No. A300-431A-2



**APPLICATIONS** WB, IP, ICC-IF

**SPECIES REACTIVITY** Human

**AMOUNT** 100 µl

**CONCENTRATION** 1000 µg/ml

**STORAGE/SHELF LIFE** 2 - 8° C / 1 year from date of receipt

**PHYSICAL STATE** Liquid

**BUFFER** Tris-citrate/phosphate buffer, pH 7 to 8 containing 0.09% Sodium Azide

**ISOTYPE** IgG

**ORIGIN** USA

**PRODUCTION PROCEDURES** Antibody was affinity purified using an epitope specific to Aurora B immobilized on solid support.

The epitope recognized by A300-431A maps to a region between residue 300 and the C-terminus (residue 344) of human Aurora B kinase using the numbering given in Swiss-Prot entry Q96GD4 (GeneID 9212).

Immunoglobulin concentration was determined by extinction coefficient: absorbance at 280 nm of 1.4 equals 1.0 mg of IgG.

**APPLICATIONS** Centrifuge tube to remove product from lid. Optimal working dilutions should be determined experimentally by the investigator. Prepare working dilution immediately before use.

Western Blot 1:2,000 - 1:10,000

Immunoprecipitation 2 - 10 µg/mg lysate

Immunofluorescence (ICC) 1:500 - 1:2,000

**APPLICATION NOTES** Western blot of immunoprecipitates performed using Normal Pig Serum (Cat. No. S100-020), Goat anti-Rabbit Light Chain HRP Conjugate (Cat. No. A120-113P) and 4-20% SDS-PAGE (link to IP-western blot protocol in Additional Info section below).

Western blot of lysates performed using standard western blot reagents and 4-20% SDS-PAGE.

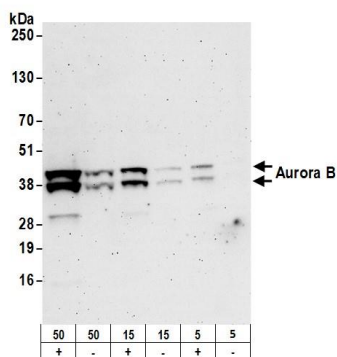
**ADDITIONAL INFO** <https://www.bethyl.com/product/A300-431A>

Use the link above to view SDS, a current list of citations, and other product specific information.

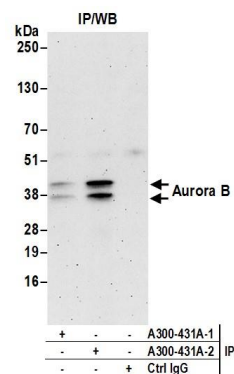
IP-western blot protocol: [https://www.bethyl.com/content/protocol\\_IP\\_WB](https://www.bethyl.com/content/protocol_IP_WB)

This document certifies that this product has met all of the quality control standards defined by Bethyl Laboratories, Inc.  
Eric McIntush, PhD | Chief Scientific Officer

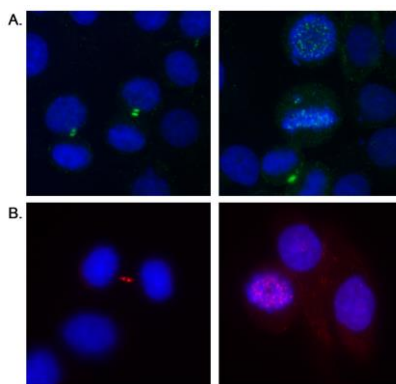
Date: June 21, 2019



**Detection of human Aurora B by western blot.** *Samples:* Whole cell lysate (50, 15, 5 µg) from HeLa cells treated with nocodazole (+) or mock treated (-). *Antibody:* Affinity purified rabbit anti-Aurora B antibody A300-431A (lot A300-431A-2) used for WB at 0.1 µg/ml. *Detection:* Chemiluminescence with an exposure time of 3 minutes.



**Detection of human Aurora B by western blot of immunoprecipitation.** *Samples:* Whole cell lysate (0.5 or 1.0 mg per IP reaction; 20% of IP loaded) from nocodazole treated HeLa cells. *Antibody:* Affinity purified rabbit anti-Aurora B antibody A300-431A (Lot. No. A300-431A-2) used at 0.1 µg/ml. Aurora B was also immunoprecipitated by a previous lot of this antibody (lot A300-431A-1). *Detection:* Chemiluminescence with an exposure time of 3 minutes.



**Detection of human Aurora B by immunocytochemistry.** *Samples:* Asynchronous HeLa cells. *Antibody:* Affinity purified rabbit anti-Aurora B antibody BL1075 (Cat. No. A300-431A) used at 0.5 µg/ml in A and at 2 µg/ml in B. *Detection:* Secondary antibodies were anti-rabbit IgG conjugated to FITC in A and conjugated to Texas Red in B.