



# SZABO SCANDIC

Part of Europa Biosite

## Produktinformation



Forschungsprodukte & Biochemikalien



Zellkultur & Verbrauchsmaterial



Diagnostik & molekulare Diagnostik



Laborgeräte & Service

Weitere Information auf den folgenden Seiten!  
See the following pages for more information!



### Lieferung & Zahlungsart

siehe unsere [Liefer- und Versandbedingungen](#)

### Zuschläge

- Mindermengenzuschlag
- Trockeneiszuschlag
- Gefahrgutzuschlag
- Expressversand

### SZABO-SCANDIC HandelsgmbH

Quellenstraße 110, A-1100 Wien

T. +43(0)1 489 3961-0

F. +43(0)1 489 3961-7

[mail@szabo-scandic.com](mailto:mail@szabo-scandic.com)

[www.szabo-scandic.com](http://www.szabo-scandic.com)

[linkedin.com/company/szaboscandic](https://www.linkedin.com/company/szaboscandic) 

# DBC1 /p30 DBC Antibody

Rabbit Polyclonal

Antigen Affinity Purified

Protein ID Q6P0Q9

Catalog No. A300-433A

GeneID 57805

Lot No. A300-433A-2

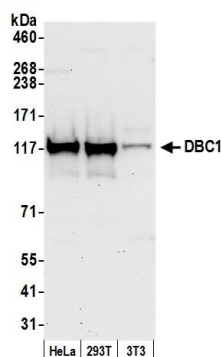


<b>APPLICATIONS</b>	WB, IP
<b>SPECIES REACTIVITY</b>	Human, Mouse
<b>PRESUMED REACTIVITY</b>	Based on 100% sequence identity, this antibody is predicted to react with Orangutan
<b>AMOUNT</b>	100 µl
<b>CONCENTRATION</b>	1000 µg/ml
<b>STORAGE/SHELF LIFE</b>	2 - 8° C / 1 year from date of receipt
<b>PHYSICAL STATE</b>	Liquid
<b>BUFFER</b>	Tris-citrate/phosphate buffer, pH 7 to 8 containing 0.09% Sodium Azide
<b>ISOTYPE</b>	IgG
<b>ORIGIN</b>	USA
<b>PRODUCTION PROCEDURES</b>	Antibody was affinity purified using an epitope specific to DBC1 immobilized on solid support.  The epitope recognized by A300-433A maps to a region between residues 650 and 700 of human Deleted in Breast Cancer 1 using the numbering given in TrEMBL entry Q6P0Q9 (GeneID 57805).  Immunoglobulin concentration was determined by extinction coefficient: absorbance at 280 nm of 1.4 equals 1.0 mg of IgG.
<b>APPLICATIONS</b>	Centrifuge tube to remove product from lid. Optimal working dilutions should be determined experimentally by the investigator. Prepare working dilution immediately before use.  Western Blot                      1:2,000 – 1:10,000  Immunoprecipitation        2 – 10 µg/mg lysate
<b>APPLICATION NOTES</b>	Western blot of immunoprecipitates performed using Normal Pig Serum (Cat. No. S100-020), Goat anti-Rabbit Light Chain HRP Conjugate (Cat. No. A120-113P) and 4-8% SDS-PAGE (link to IP-western blot protocol in Additional Info section below).  Western blot of lysates performed using standard western blot reagents and 4-8% SDS-PAGE.
<b>IHC HUMAN CONTROLS</b>	Breast Carcinoma, Colon Carcinoma, Metastatic Lymph Node, Ovarian Carcinoma, Pancreatic Islet Cell Tumor, Testicular Seminoma
<b>ADDITIONAL INFO</b>	<a href="https://www.bethyl.com/product/A300-433A">https://www.bethyl.com/product/A300-433A</a> Use the link above to view SDS, a current list of citations, and other product specific information. IP-western blot protocol: <a href="https://www.bethyl.com/content/protocol_IP_WB">https://www.bethyl.com/content/protocol_IP_WB</a>

This document certifies that this product has met all of the quality control standards defined by Bethyl Laboratories, Inc.

Eric McIntush, PhD | Chief Scientific Officer

Date: June 21, 2019

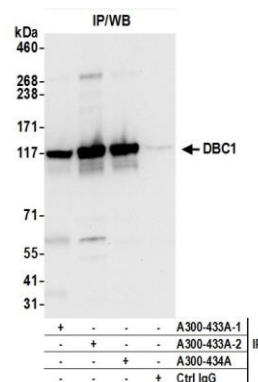


**Detection of human and mouse DBC1 by western blot.**

*Samples:* Whole cell lysate (50 µg) from HeLa, HEK293T, and mouse NIH 3T3 cells prepared using NETN lysis buffer.

*Antibody:* Affinity purified rabbit anti-DBC1 antibody A300-433A (lot A300-433A-2) used for WB at 0.1 µg/ml.

*Detection:* Chemiluminescence with an exposure time of 30 seconds.



**Detection of human DBC1 by western blot of immunoprecipitates.**

*Samples:* Whole cell lysate (0.5 or 1.0 mg per IP reaction; 20% of IP loaded) from HeLa cells prepared using NETN lysis buffer.

*Antibodies:* Affinity purified rabbit anti-DBC1 antibody A300-433A (lot A300-433A-2) used for IP at 6 µg per reaction. DBC1 was also immunoprecipitated by a previous lot of this antibody (lot A300-433A-1) and rabbit anti-DBC1 antibody A300-434A For blotting immunoprecipitated DBC1, A300-433A was used at 1 µg/ml.

*Detection:* Chemiluminescence with an exposure time of 10 seconds.