



SZABO SCANDIC

Part of Europa Biosite

Produktinformation



Forschungsprodukte & Biochemikalien



Zellkultur & Verbrauchsmaterial



Diagnostik & molekulare Diagnostik



Laborgeräte & Service

Weitere Information auf den folgenden Seiten!
See the following pages for more information!



Lieferung & Zahlungsart

siehe unsere [Liefer- und Versandbedingungen](#)

Zuschläge

- Mindermengenzuschlag
- Trockeneiszuschlag
- Gefahrgutzuschlag
- Expressversand

SZABO-SCANDIC HandelsgmbH

Quellenstraße 110, A-1100 Wien

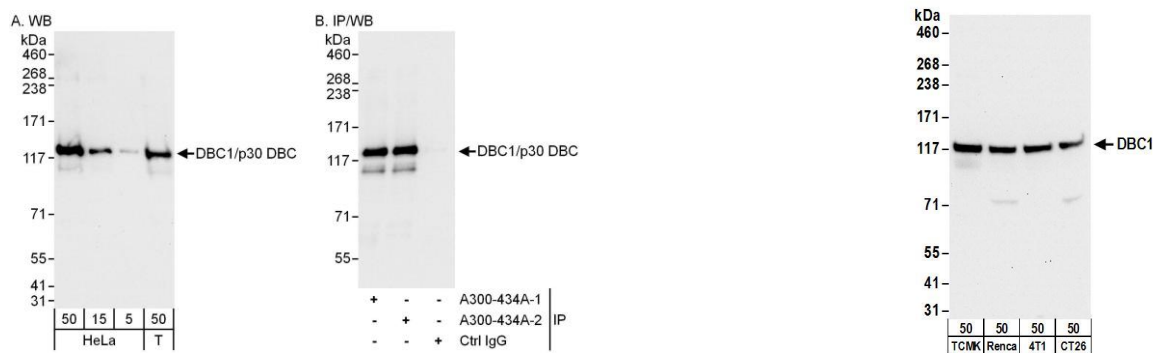
T. +43(0)1 489 3961-0

F. +43(0)1 489 3961-7

mail@szabo-scandic.com

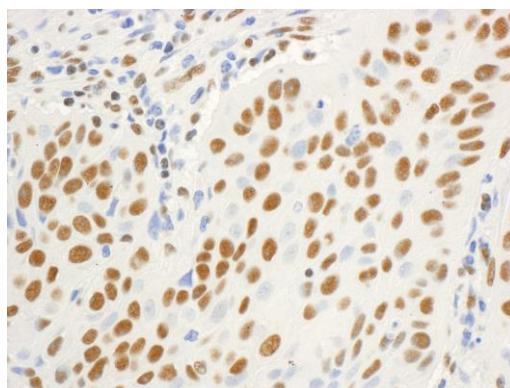
www.szabo-scandic.com

[linkedin.com/company/szaboscandic](https://www.linkedin.com/company/szaboscandic) 



Detection of human DBC1/p30 DBC by western blot and immunoprecipitation. *Samples:* Whole cell lysate from HeLa (5, 15 and 50 µg for WB; 1 mg for IP, 20% of IP loaded) and HEK293T (T; 50 µg) cells. *Antibodies:* Affinity purified rabbit anti-DBC1/p30 DBC antibody A300-434A (lot number A300-434A-2) used for WB at 0.1 µg/ml (A) and 1 µg/ml (B) and used for IP at 3 µg/mg lysate. DBC1/p30 DBC was also immunoprecipitated by a previous lot (A300-434A-1) of this antibody. *Detection:* Chemiluminescence with exposure times of 10 seconds (A) and 1 second (B).

Detection of mouse DBC1 by western blot. *Samples:* Whole cell lysate (50 µg) from TCMK-1, Renca, 4T1, and CT26.WT cells. *Antibodies:* Affinity purified rabbit anti-DBC1 antibody A300-434A (lot A300-434A-2) used for WB at 1 µg/ml. *Detection:* Chemiluminescence with an exposure time of 30 seconds.



Detection of human DBC1/p30 DBC by immunohistochemistry. *Sample:* FFPE section of human lung carcinoma. *Antibody:* Affinity purified rabbit anti-DBC1/p30 DBC (Cat. No. A300-434A Lot2) used at a dilution of 1:1,000 (1 µg/ml). *Detection:* DAB