



SZABO SCANDIC

Part of Europa Biosite

Produktinformation



Forschungsprodukte & Biochemikalien



Zellkultur & Verbrauchsmaterial



Diagnostik & molekulare Diagnostik



Laborgeräte & Service

Weitere Information auf den folgenden Seiten!
See the following pages for more information!



Lieferung & Zahlungsart

siehe unsere [Liefer- und Versandbedingungen](#)

Zuschläge

- Mindermengenzuschlag
- Trockeneiszuschlag
- Gefahrgutzuschlag
- Expressversand

SZABO-SCANDIC HandelsgmbH

Quellenstraße 110, A-1100 Wien

T. +43(0)1 489 3961-0

F. +43(0)1 489 3961-7

mail@szabo-scandic.com

www.szabo-scandic.com

[linkedin.com/company/szaboscandic](https://www.linkedin.com/company/szaboscandic) 

CCAR1 Antibody

Rabbit Polyclonal

Antigen Affinity Purified

Protein ID Q6X935

Catalog No. A300-435A

GeneID 55749

Lot No. A300-435A-2



APPLICATIONS	WB, IP, IHC
SPECIES REACTIVITY	Human, Mouse
AMOUNT	100 µl
CONCENTRATION	1000 µg/ml
STORAGE/SHELF LIFE	2 - 8° C / 1 year from date of receipt
PHYSICAL STATE	Liquid
BUFFER	Tris-citrate/phosphate buffer, pH 7 to 8 containing 0.09% Sodium Azide
ISOTYPE	IgG
ORIGIN	USA
PRODUCTION PROCEDURES	Antibody was affinity purified using an epitope specific to CCAR1 immobilized on solid support.

The epitope recognized by A300-435A maps to a region between residues 1 and 50 of human Cell-Cycle and Apoptosis Regulatory Protein 1 using the numbering given in TrEMBL entry Q6X935 (GeneID 55749).

Immunoglobulin concentration was determined by extinction coefficient: absorbance at 280 nm of 1.4 equals 1.0 mg of IgG.

APPLICATIONS Centrifuge tube to remove product from lid. Optimal working dilutions should be determined experimentally by the investigator. Prepare working dilution immediately before use.

Western Blot 1:5,000 - 1:15,000

Immunoprecipitation 1 - 10 µg/mg lysate

Immunohistochemistry 1:500 - 1:2,000. Epitope retrieval with citrate buffer pH 6.0 is recommended for FFPE tissue sections.

APPLICATION NOTES Western blot of immunoprecipitates performed using Normal Pig Serum (Cat. No. S100-020), Goat anti-Rabbit Light Chain HRP Conjugate (Cat. No. A120-113P) and 4-8% SDS-PAGE (link to IP-western blot protocol in Additional Info section below).

IHC HUMAN CONTROLS Western blot of lysates performed using standard western blot reagents and 4-8% SDS-PAGE. Breast Carcinoma, Colon Carcinoma, Ovarian Carcinoma, Prostate Carcinoma, Stomach Adenocarcinoma, Testicular Seminoma

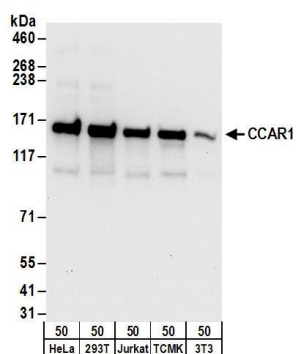
IHC MOUSE CONTROLS Renal Cell Carcinoma, Squamous Cell Carcinoma

ADDITIONAL INFO <https://www.bethyl.com/product/A300-435A>

Use the link above to view SDS, a current list of citations, and other product specific information.

IP-western blot protocol: https://www.bethyl.com/content/protocol_IP_WB

This document certifies that this product has met all of the quality control standards defined by Bethyl Laboratories, Inc.
Eric McIntush, PhD | Chief Scientific Officer Date: June 21, 2019

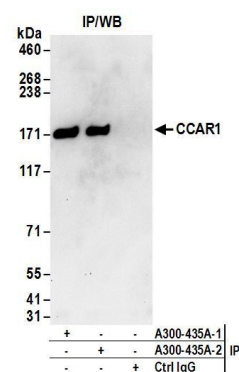


Detection of human and mouse CCAR1 by western blot.

Samples: Whole cell lysate (50 µg) from HeLa, HEK293T, Jurkat, mouse TCMK-1, and mouse NIH 3T3 cells.

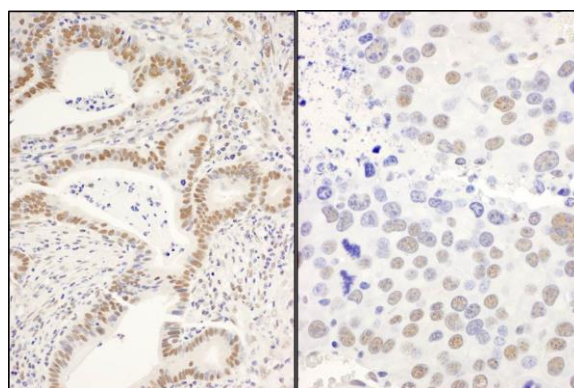
Antibodies: Affinity purified rabbit anti-CCAR1 antibody A300-435A (lot A300-435A-2) used for WB at 0.1 µg/ml.

Detection: Chemiluminescence with an exposure time of 10 seconds.



Detection of human CCAR1 by western blot of immunoprecipitates.

Samples: Whole cell lysate (1 mg for IP; 20% of IP loaded) from HeLa cells. *Antibodies:* Affinity purified rabbit anti-CCAR1 antibody A300-435A (lot A300-435A-2) used for IP at 6 µg/mg lysate. CCAR1 was also immunoprecipitated by a previous lot (lot A300-435A-1) of the antibody. For blotting immunoprecipitated CCAR1, A300-435A was used at 1 µg/ml. *Detection:* Chemiluminescence with an exposure time of 10 seconds.



Detection of human and mouse CCAR1 by immunohistochemistry. *Sample:* FFPE section of human stomach carcinoma (left) and mouse renal cell carcinoma (right). *Antibody:* Affinity purified rabbit anti-CCAR1 (Cat. No. A300-435A Lot2) used at a dilution of 1:1,000 (1 µg/ml). *Detection:* DAB